



baumann dekor

FINE AUSTRIAN FABRICS



Collection
VOYAGE

VOYAGE

by BAUMANN DEKOR

A maritime voyage drifting through subtle form.

VOYAGE is a striking contract furnishing collection that blends organic textures with modern abstraction, translating a marine story into decorative and light upholstery designs. Effortlessly gliding from soft ombré transitions and architectural geometry to rippling, wave-led motifs, each design captures the calm movement of shoreline light and sea-sculpted surfaces—layered, tonal, and easy to live with.

VOYAGE offers a balanced mix of statement patterns and grounding textures that coordinate effortlessly across cruise, modern coastal and earthy interiors. With names drawn from nautical elements, the collection reads as a cohesive journey—structured, fluid, and designed to bring depth and rhythm to the space.

FLOAT	Page 3
PIER	Page 5
DECK	Page 7
SEABED	Page 9
ANCHOR	Page 11
CRUISE	Page 13
WOLLENA	Page 15





FLOAT

A drifted, natural-look texture with relaxed coastal ease.

FLOAT captures the easy appeal of natural fiber blends despite its inherently flame-retardant polyester composition, with a softly irregular, slubbed surface that feels sun-washed and grounded. This versatile textured plain is ideal for drapery and decorative accents that desire depth without a dominant motif.

Keywords:

Natural look, texture, IFR, irregular, slubbed surface, drapery, decorative.

Article Reference	FLOAT 70001			
No. of Colors	18			
Width (+/-)	140 cms			
Repeat (+/-)	Vertical	N/A	Horizontal	N/A
Composition	100% Polyester FR			
Weight (+/-)	195 GSM			
Abrasion Resistance (ca.)	25,000 Martindale			
Usage	Light Upholstery, Decorative			
FR Standard	Meets International FR standards. (Please contact us for more info.)			
Care Instructions				



70001/010



70001/011



70001/020



70001/022



70001/070



70001/077



70001/040



70001/044



70001/060



70001/066



70001/030



70001/033



70001/090



70001/099



70001/080



70001/088



70001/078



70001/087



PIER

Architectural geometry meets soft ombré fade, echoing light on the waterline.

PIER pairs clean geometry with a smooth tonal fade, creating an ikat-inspired impression that feels structured yet softened—like reflections of a seaside pier. A strong choice for both residential and contract settings, PIER adds graphic interest while staying effortless to style within coastal contemporary and earthy minimalist schemes.

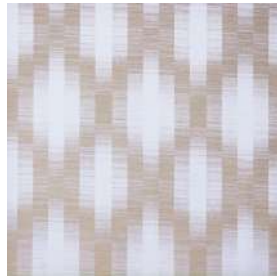
Keywords:

Geometry, tonal fade, ikat-inspired, structured, contract, graphic interest.

Article Reference	PIER 70002			
No. of Colors	9			
Width (+/-)	140 cms			
Repeat (+/-)	Vertical	37.00 cm	Horizontal	23.00 cm
Composition	100% Polyester FR			
Weight (+/-)	270 GSM			
Abrasion Resistance (ca.)	25,000 Martindale			
Usage	Light Upholstery, Decorative			
FR Standard	Meets International FR standards. (Please contact us for more info.)			
Care Instructions				



70002/010



70002/020



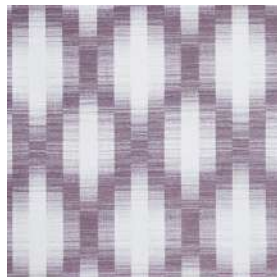
70002/070



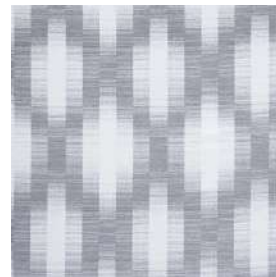
70002/040



70002/060



70002/030



70002/090



70002/080



70002/078



DECK

An irregular stripe flowing in a vertical rhythm.

DECK is defined by softly uneven vertical striping that evokes the steady rhythm of boards underfoot, enhanced with a subtle tonal play. The effect brings structure without shouting, making it ideal for draperies, cushions, and accent pieces while being easy to coordinate with plains and bolder motifs.

Keywords:

Irregular stripe, vertical, board, tonal play, draperies, accent pieces, cushions.

Article Reference	DECK 70003			
No. of Colors	9			
Width (+/-)	140 cms			
Repeat (+/-)	Vertical	27.00 cm	Horizontal	36.00 cm
Composition	100% Polyester FR			
Weight (+/-)	220 GSM			
Abrasion Resistance (ca.)	15,000 Martindale			
Usage	Light Upholstery, Decorative			
FR Standard	Meets International FR standards. (Please contact us for more info.)			
Care Instructions				



70003/010



70003/020



70003/070



70003/040



70003/060



70003/030



70003/090



70003/080



70003/078



SEABED

Flowing like gentle waves across the seabed

SEABED translates gentle water movement into a compact, flowing pattern that feels organic and quietly animated. Its small-scale rhythm makes it especially versatile for decorative use as curtains and cushions in contract settings, adding character without overwhelming a space.

Keywords:

Gentle, water movement, compact, flowing pattern, small-scale, decorative, contract.

Article Reference	SEABED 70004			
No. of Colors	9			
Width (+/-)	140 cms			
Repeat (+/-)	Vertical	7.50 cm	Horizontal	4.50 cm
Composition	100% Polyester FR			
Weight (+/-)	270 GSM			
Abrasion Resistance (ca.)	20,000 Martindale			
Usage	Light Upholstery, Decorative			
FR Standard	Meets International FR standards. (Please contact us for more info.)			
Care Instructions				



70004/010



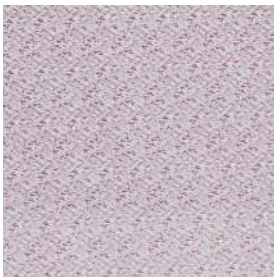
70004/020



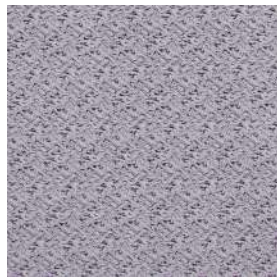
70004/070



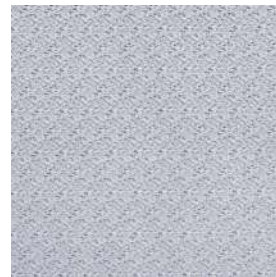
70004/040



70004/060



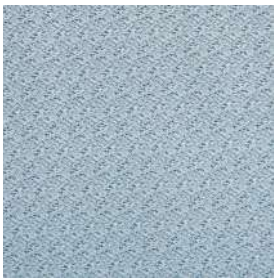
70004/030



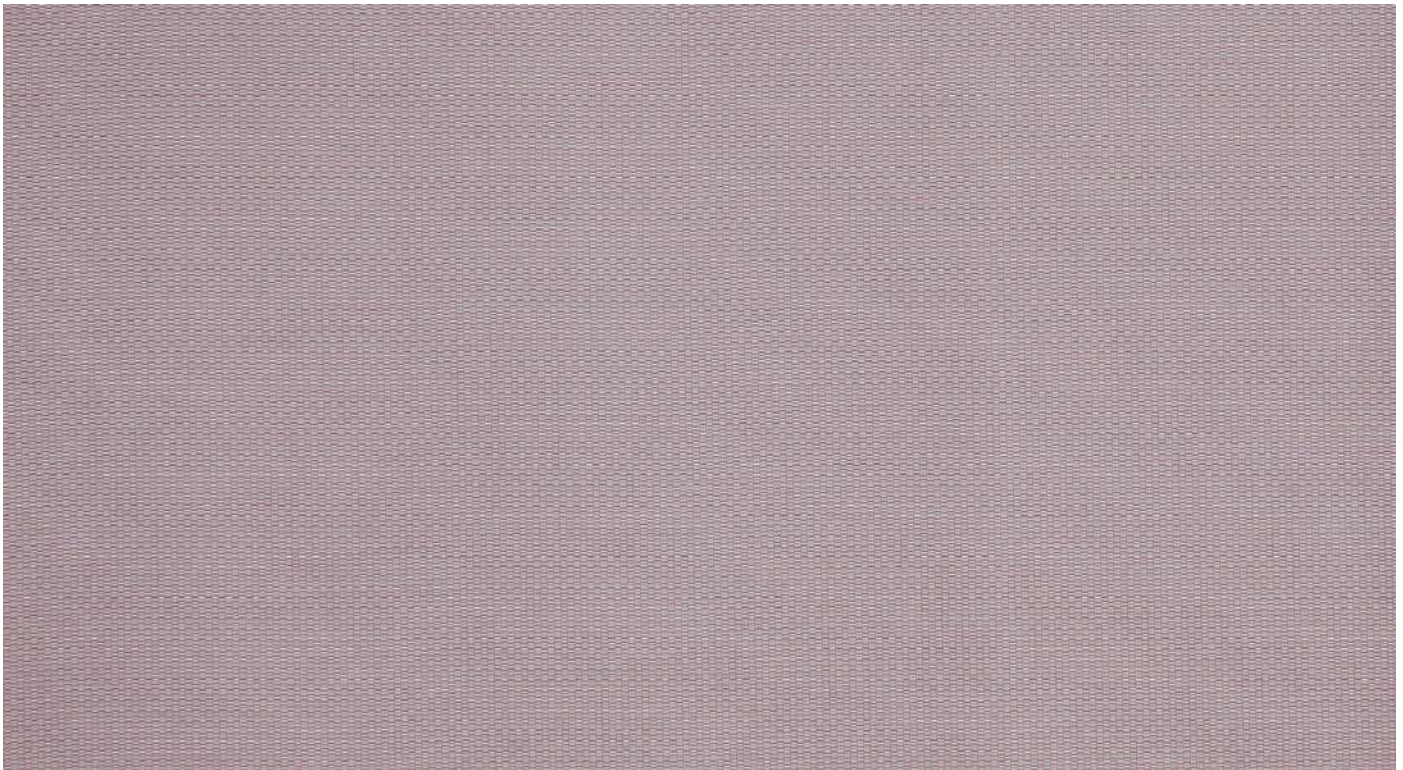
70004/090



70004/080



70004/078



ANCHOR

Softly Shaded, Anchored in Rich Texture

ANCHOR is a texture-led plain with a fine basket-like surface that adds order and depth through tonal relief. A grounding coordinate across the collection, ANCHOR balances expressive designs and unifies varied patterns into a calm, refined whole.

Keywords:

Texture- led, basket like surface, depth, tonal, soft shade, grounding coordinate, decorative

Article Reference	ANCHOR 70005			
No. of Colors	9			
Width (+/-)	140 cms			
Repeat (+/-)	Vertical	N/A	Horizontal	N/A
Composition	100% Polyester FR			
Weight (+/-)	270 GSM			
Abrasion Resistance (ca.)	18,000 Martindale			
Usage	Light Upholstery, Decorative			
FR Standard	Meets International FR standards. (Please contact us for more info.)			
Care Instructions				



70005/010



70005/020



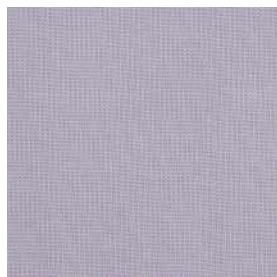
70005/070



70005/040



70005/060



70005/030



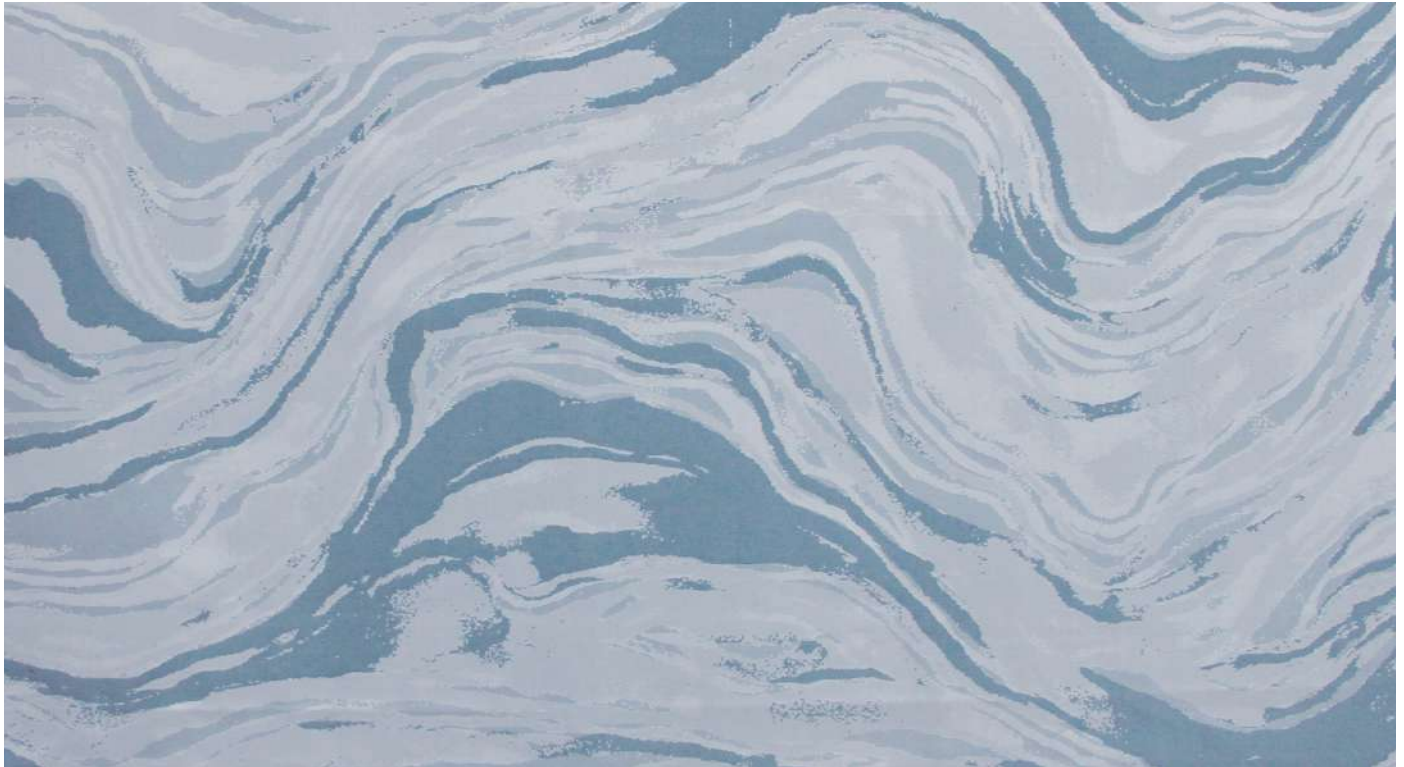
70005/090



70005/080



70005/078



CRUISE

Large-scale waves that cruise with refined drama.

CRUISE makes an instant impression with its large, sweeping, wave-like pattern in blended tones that drift across the surface like splashing waves or the ever-shifting sand dunes. Ideal for marine, or contemporary nature inspired interiors, CRUISE adds sculpted rhythm—perfect for light upholstered accents, standout cushions and curated curtains that invigorate a design scheme with calm energy.

Keywords:

Wave-like pattern, blended tones, large repeat, marine, contemporary, light upholstery, cushions, curtains, statement.

Article Reference	CRUISE 70006			
No. of Colors	9			
Width (+/-)	140 cms			
Repeat (+/-)	Vertical	168.00cm	Horizontal	146.00 cm
Composition	100% Polyester FR			
Weight (+/-)	270 GSM			
Abrasion Resistance (ca.)	40,000 Martindale			
Usage	Light Upholstery, Decorative			
FR Standard	Meets International FR standards. (Please contact us for more info.)			
Care Instructions				



70006/010



70006/020



70006/070



70006/040



70006/060



70006/030



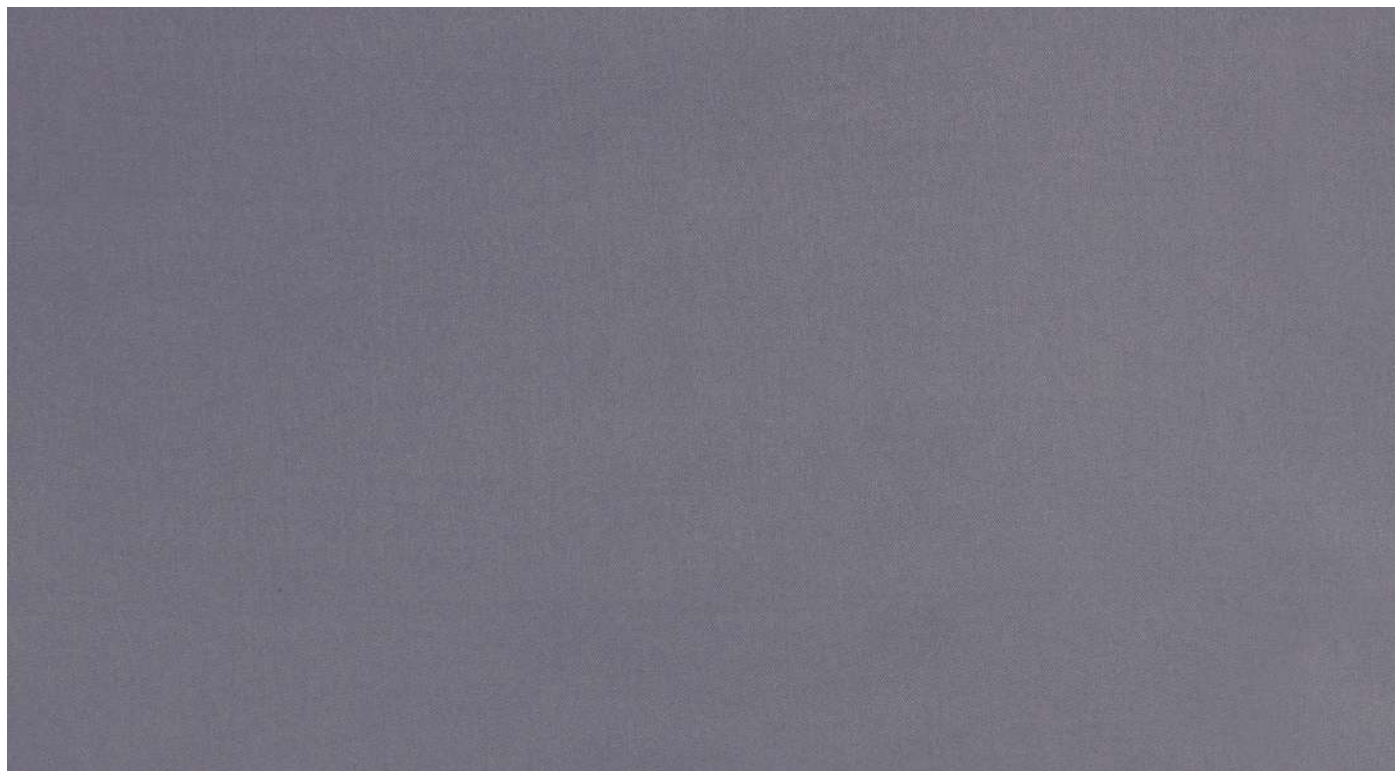
70006/090



70006/080



70006/078



WOLLENA

An elegant wool-satin look, that blends effortlessly in any designed interior.

WOLLENA is a clean uni color fabric in a smooth, matte finish created to simulate a wool satin— simple and modest, but hard to ignore. With its FR polyester composition, it is a versatile foundation fabric for drapery, upholstery and cushions, ideal for interiors that rely on subtle texture, balance, and quiet sophistication. Whether used tone-on-tone or as a coordinating base in a design theme, WOLLENA offers a trendy palette for cohesive themes and seamless coordination.

Keywords:

Matte, solid, wool-satin look, versatile plain, drapery, upholstery, cushion, layering, hospitality, contract interiors.

Article Reference	WOLLENA 60005			
No. of Colors	9			
Width (+/-)	140 cms			
Repeat (+/-)	Vertical	N/A	Horizontal	N/A
Composition	100% Polyester FR			
Weight (+/-)	270 GSM			
Abrasion Resistance (ca.)	+50,000 Martindale			
Usage	Light Upholstery, Decorative			
FR Standard	Meets International FR standards. (Please contact us for more info.)			
Care Instructions				



60005-002



60005-022



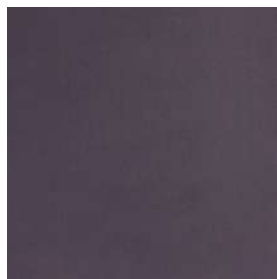
60005-017



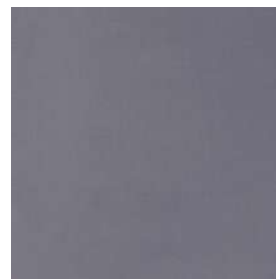
60005-041



60005-025



60005-013



60005-091



60005-008



60005-078

baumann dekor

FINE AUSTRIAN FABRICS

BAUMANN DEKOR GmbH

Schremser Strasse 38, 3950 Gmünd, Austria
T +43 2852 9008-0 | F +43 2852 9008-209
Email: office@baumann.co.at
www.baumann.co.at

BAUMANN DEKOR USA

979 Third Avenue, Suite 518, New York, NY
10022, T: (212) 258-0688
Email: office@baumanndekorusa.com
www.baumanndekorusa.com

