

# VFM DESIGN



Collection

# PIMACO



On request:  
FR Version  
Special Colour

# PIMACO

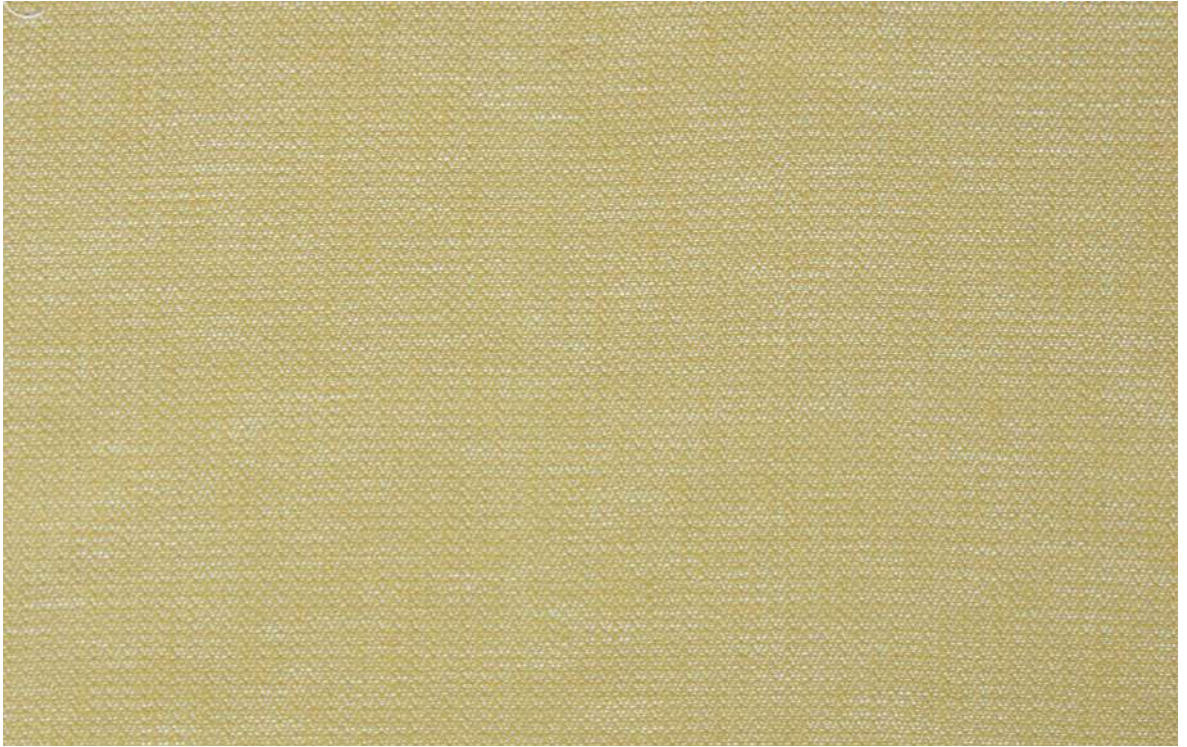
by VFM DESIGN

## A world of cotton, woven in timeless textures.

Inspired by the purity of Pima cotton and the charm of cities around the world, the PIMACO collection celebrates natural comfort through refined dobby weaves and intricate textures. Crafted in Cotton, each article—whether striped, checked, plain, or embroidered—reflects the tactile beauty of craftsmanship and enduring design. From soft plains and subtle twills to statement patterns and decorative embroidery, PIMACO brings together global inspiration and local artistry. Designed for general domestic upholstery, drapery, and cushions, this collection takes interiors on a world tour and embodies effortless versatility, lending interiors an authentic warmth rooted in texture, durability, and timeless style.

AKOLA	Page 03
NAPLES	Page 05
OSAKA	Page 07
BOLTON	Page 09
SAVANNAH	Page 11
MOSUL	Page 13
MASULI	Page 15
ALEXANDRIA	Page 17





## AKOLA

### The oscillating rhythm of cotton and craft

AKOLA features a finely detailed broken twill pattern that plays with light and texture. Its soft hand and durable construction make it ideal for upholstery and cushions alike, bringing natural warmth and tactile charm to contemporary interiors.

#### Keywords:

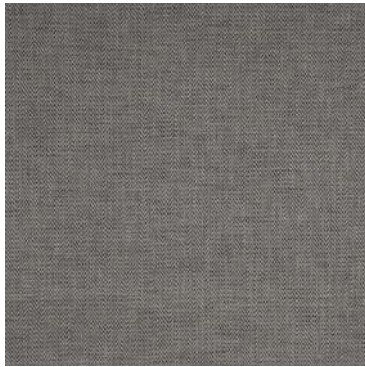
Broken twill pattern, light and texture, soft hand, durable construction, upholstery and cushions, natural warmth, contemporary.

Article Reference	AKOLA 3238			
No. of Colors	9			
Width (+/-)	140cm (55")			
Repeat (+/-)	Vertical	1.00cm	Horizontal	1.00cm
Composition	100% Cotton			
Weight (+/-)	580 GSM			
Abrasion Resistance	+50,000 Martindale			
Usage	Cushion, Upholstery			
Care Instructions				

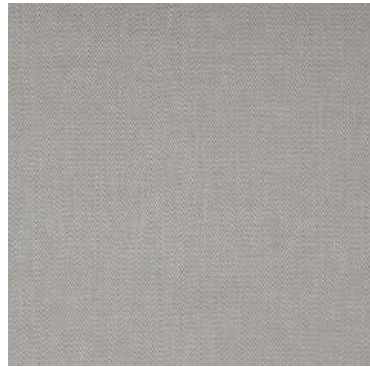
# AKOLA 3238



3238/01



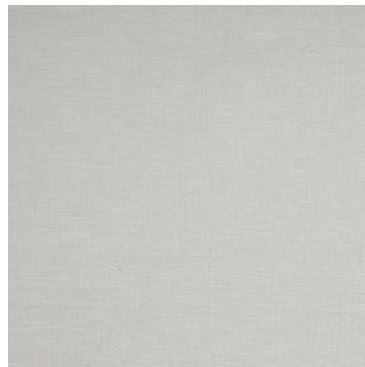
3238/02



3238/03



3238/04



3238/05



3238/06



3238/07



3238/08



3238/09



## NAPLES

### Striped sophistication with effortless charm.

NAPLES brings a lively interplay of texture and tone through its woven stripes. Crafted from cotton, this design brings warmth and elegance to upholstery and cushions, infusing interiors with a contemporary rhythm inspired by Mediterranean style.

#### Keywords:

Lively interplay, texture and tone, woven stripes, cotton, upholstery, cushions, Mediterranean style.

Article Reference	NAPLES 3239			
No. of Colors	7			
Width (+/-)	140cm (55")			
Repeat (+/-)	Vertical	N/A	Horizontal	4.50cm
Composition	100% Cotton			
Weight (+/-)	505 GSM			
Abrasion Resistance	+50,000 Martindale			
Usage	Cushion, Upholstery			
Care Instructions				

# NAPLES 3239



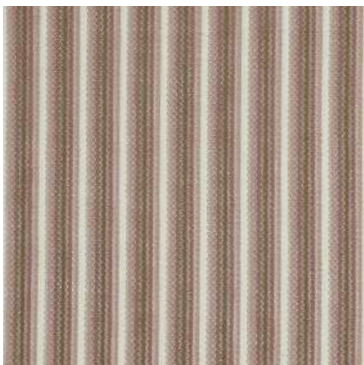
3239/01



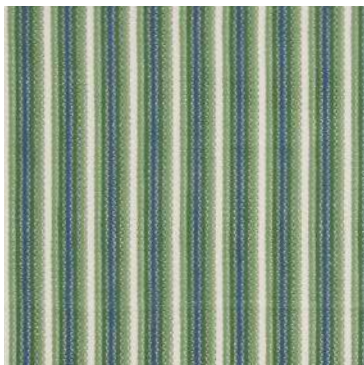
3239/02



3239/03



3239/04



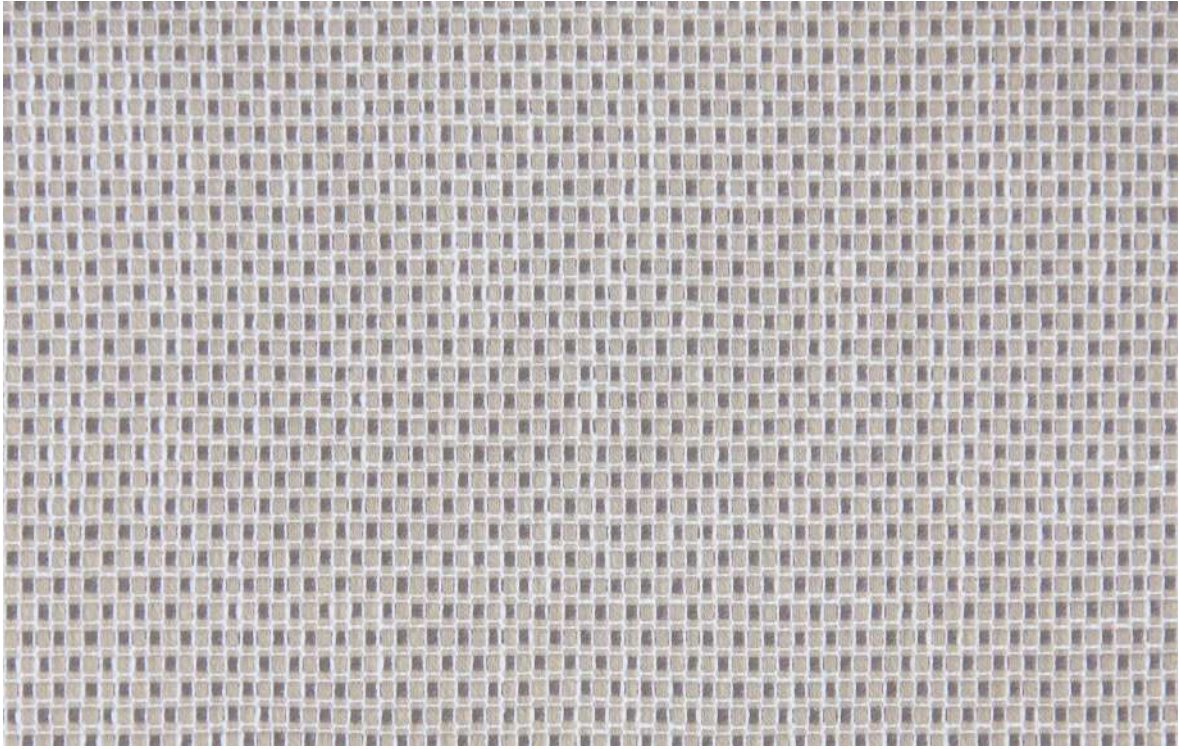
3239/05



3239/06



3239/07



# OSAKA

**Precision in pattern, calm in character.**

OSAKA presents a refined, minute check pattern that reflects the quiet precision of its dobby weave. Woven in cotton, its subtle texture and balanced geometry bring artisanal charm to upholstery and cushions.

**Keywords:**

Minute check, precision, dobby, cotton, texture, artisanal charm, upholstery, cushions.

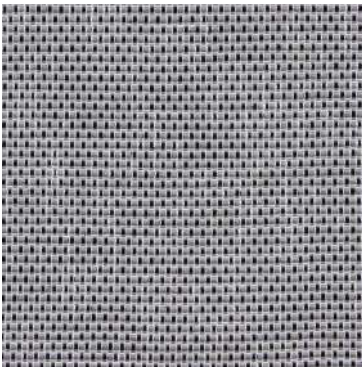
Article Reference	OSAKA 3240			
No. of Colors	8			
Width (+/-)	140cm (55")			
Repeat (+/-)	Vertical	1.00cm	Horizontal	1.00cm
Composition	100% Cotton			
Weight (+/-)	565 GSM			
Abrasion Resistance	+50,000 Martindale			
Usage	Cushion, Upholstery			
Care Instructions				



3240/01



3240/02



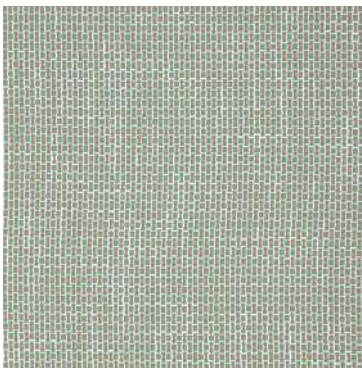
3240/03



3240/04



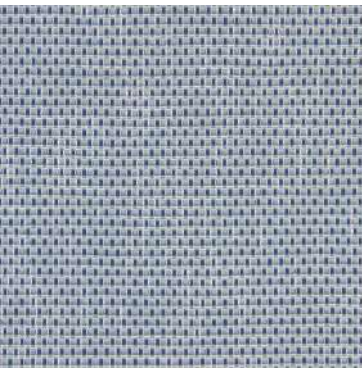
3240/05



3240/06



3240/07



3240/08



**BOLTON**

**Bold stripes in intricate interplay**

BOLTON celebrates structure and symmetry through its broad stripes. The interplay of varied large scale stripe widths and subtle texture adds a modern edge to classic cotton craftsmanship. Durable yet refined, it’s a versatile choice for upholstery and cushions, lending interiors a confident sense of order and movement.

**Keywords:**

Bold stripes, cotton upholstery, large-scale pattern, symmetry, modern, durable.

Article Reference	BOLTON 3241			
No. of Colors	6			
Width (+/-)	140cm (55")			
Repeat (+/-)	Vertical	N/A	Horizontal	21.50cm
Composition	100% Cotton			
Weight (+/-)	440 GSM			
Abrasion Resistance	+50,000 Martindale			
Usage	Cushion, Upholstery			
Care Instructions				



3241/01



3241/02



3241/03



3241/04



3241/05



3241/06



SAVANNAH

Where texture flows in quiet rhythm.

Evoking the calm of open landscapes, SAVANNAH features finely textured stripes that lend a soft tactile appeal. The soft, cotton composition balances natural comfort with everyday resilience. Ideal for upholstery and cushions, SAVANNAH adds a gentle sense of movement and warmth to relaxed interiors.

Keywords:

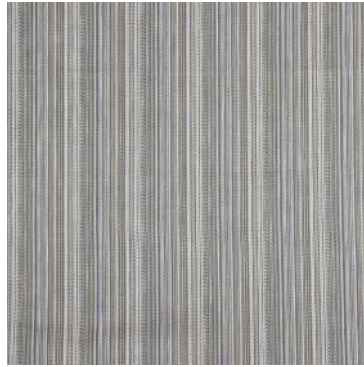
Stripes, tactile texture, soft cotton, upholstery, relaxed interiors.

Article Reference	SAVANNAH 3242			
No. of Colors	6			
Width (+/-)	140cm (55")			
Repeat (+/-)	Vertical	N/A	Horizontal	9.50cm
Composition	100% Cotton			
Weight (+/-)	505 GSM			
Abrasion Resistance	+50,000 Martindale			
Usage	Cushion, Upholstery			
Care Instructions				

# SAVANNAH 3242



3242/01



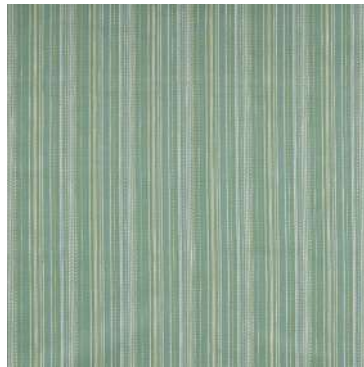
3242/02



3242/03



3242/04



3242/05



3242/06



## MOSUL

### Depth in simplicity, strength in weave.

MOSUL reveals a subtle cross-hatch effect. Its cotton construction gives it a naturally breathable, tactile quality, while the tonal interplay adds visual depth. Suitable for upholstery, cushions, or drapery, MOSUL embodies quiet versatility and enduring comfort in contemporary interiors.

#### Keywords:

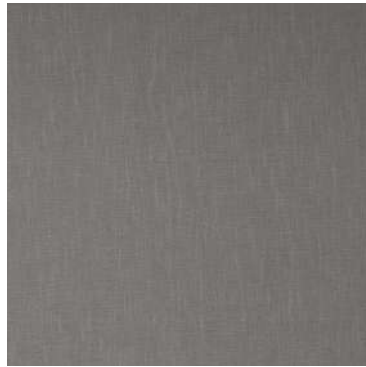
Subtle cross-hatch, cotton, breathable, tonal, depth, upholstery, cushion, drapery.

Article Reference	MOSUL 3243			
No. of Colors	6			
Width (+/-)	140cm (55")			
Repeat (+/-)	Vertical	N/A	Horizontal	N/A
Composition	100% Cotton			
Weight (+/-)	317 GSM			
Abrasion Resistance	+30,000 Martindale			
Usage	Light Upholstery, Decorative			
Care Instructions				

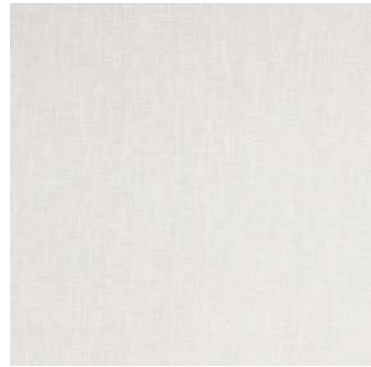
# MOSUL 3243



3243/01



3243/02



3243/03



3243/04



3243/05



3243/06



## MASULI

### Pure cotton calm with a woven soul.

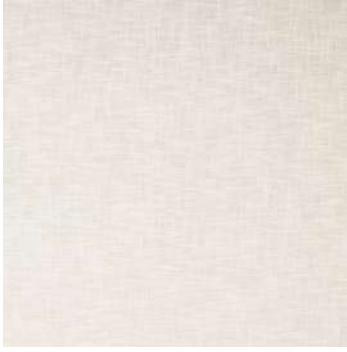
MASULI exudes quiet sophistication through its gentle cross-hatch texture. Piece-dyed for even tone and depth, it highlights cotton’s natural beauty in a versatile, tactile finish. Ideal for upholstery and decorative applications, MASULI lends interiors an airy elegance and effortless refinement.

#### Keywords:

Minute check, precision, dobby, cotton, texture, artisanal charm, upholstery, cushions. Cross-hatch texture, piece-dyed, even tone, cotton, versatile, upholstery, decorative.

Article Reference	MASULI 3244			
No. of Colors	4			
Width (+/-)	138cm (54")			
Repeat (+/-)	Vertical	N/A	Horizontal	N/A
Composition	100% Cotton			
Weight (+/-)	317 GSM			
Abrasion Resistance	+30,000 Martindale			
Usage	Light Upholstery, Decorative			
Care Instructions				

# MASULI 3244



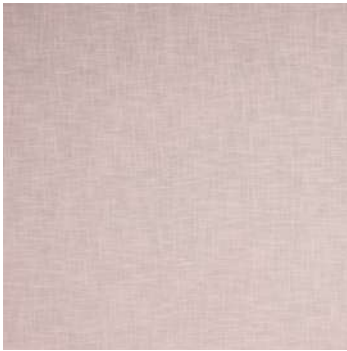
3244/01



3244/02



3244/03



3244/04



## ALEXANDRIA

**An embroidered ode to geometry and grace.**

ALEXANDRIA redefines decorative textiles through intricate embroidery on a cotton base. Its layered, broken chevron and geometric motifs evoke architectural artistry, blending texture and dimension in every thread. Perfect for cushions and drapery, this fabric adds a touch of opulence and global sophistication to refined interiors.

**Keywords:**

Embroidered, geometric pattern, cotton base, decorative fabric, architectural.

Article Reference	ALEXANDRIA 3245			
No. of Colors	5			
Width (+/-)	Overall: 138cm (54") Usable: 126cm (50")			
Repeat (+/-)	Vertical	36.50cm	Horizontal	41.00cm
Composition	48% Cotton, 19% Viscose, 33% Polyester			
Weight (+/-)	517 GSM			
Abrasion Resistance	N/A			
Usage	Decorative			
Care Instructions				

# ALEXANDRIA 3245



3245/01



3245/02



3245/03



3245/04



3245/05

VFM  
DESIGN

[www.vfm-design.com](http://www.vfm-design.com)

**FOR ENQUIRIES:**

**Europe:**  
[office@baumann.co.at](mailto:office@baumann.co.at)

**USA:**  
[office@baumanndekor.com](mailto:office@baumanndekor.com)

**Middle East:**  
[office@warpsandwefts.com](mailto:office@warpsandwefts.com)

**India:**  
[office@consilioresources.com](mailto:office@consilioresources.com)