

# VFM DESIGN



Collection

# CALICO



On request:  
FR Version  
Special Colour

# CALICO

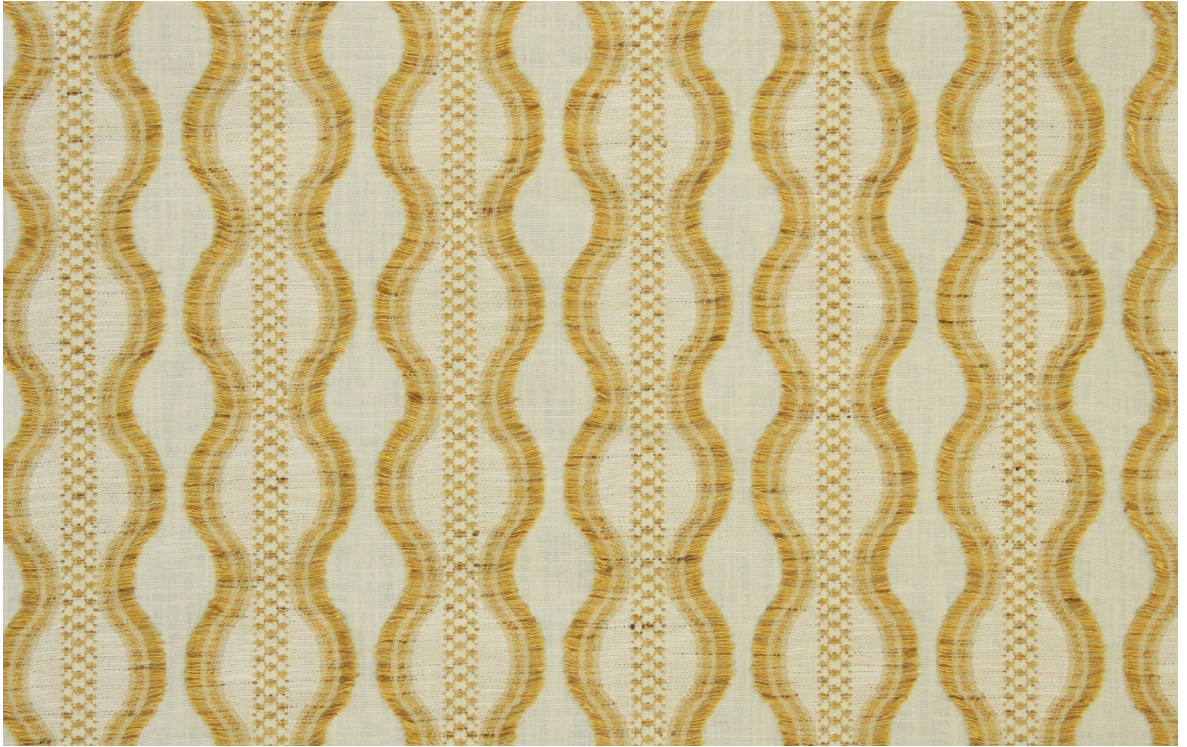
by VFM DESIGN

## Uniting Rustic Spirit and Modern Craft

The CALICO collection is a refined celebration of tactile diversity and textile craftsmanship, where each article draws inspiration from natural fibers and earth-toned palettes. Rich blends of cotton, polyester, linen, and viscose form the foundation of this versatile range. Featuring an array of jacquards, dobby weaves, and piece-dyed fabrics, the collection is united by a soft-spoken elegance that enhances both decorative and functional settings. With surface textures ranging from woven fil coupé to abstract chevrons and multi-tone textures, CALICO offers something for every interior mood — from statement upholstery to tranquil drapery and accent cushions.

KAPAS	Page 03
KATUN	Page 05
MOMEN	Page 07
PARTHI	Page 09
PAMBA	Page 11
PAMUK	Page 12
MILO	Page 14





## KAPAS

### A rhythmic wave of softness and style

KAPAS is a decorative jacquard crafted with a fil coupé technique, featuring cut weft yarns that create wavy vertical stripes with a delicate fringe-like effect. Ideal for drapery and cushions, its breathable cotton-polyester blend combines the softness of cotton with the durability of polyester, making it perfectly suited for relaxed, earthy interiors.

#### Keywords:

Decorative, Jacquard, fil coupé, cut weft, wavy, vertical stripe, poly-cotton, breathable, durable.

Article Reference	KAPAS 3231			
No. of Colors	07			
Width (+/-)	142cm (56")			
Repeat (+/-)	Vertical	8.50cm	Horizontal	8.75cm
Composition	60% Cotton, 40% Polyester			
Weight (+/-)	303 GSM			
Abrasion Resistance	NA			
Usage	Cushion, Drapery			
Care Instructions				

# KAPAS 3231



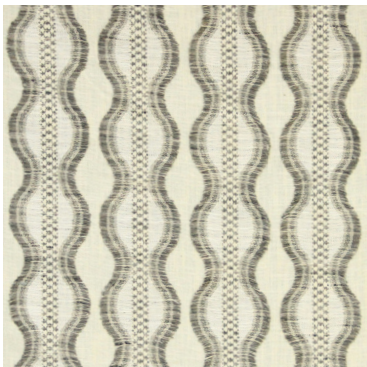
3231/01



3231/02



3231/03



3231/04



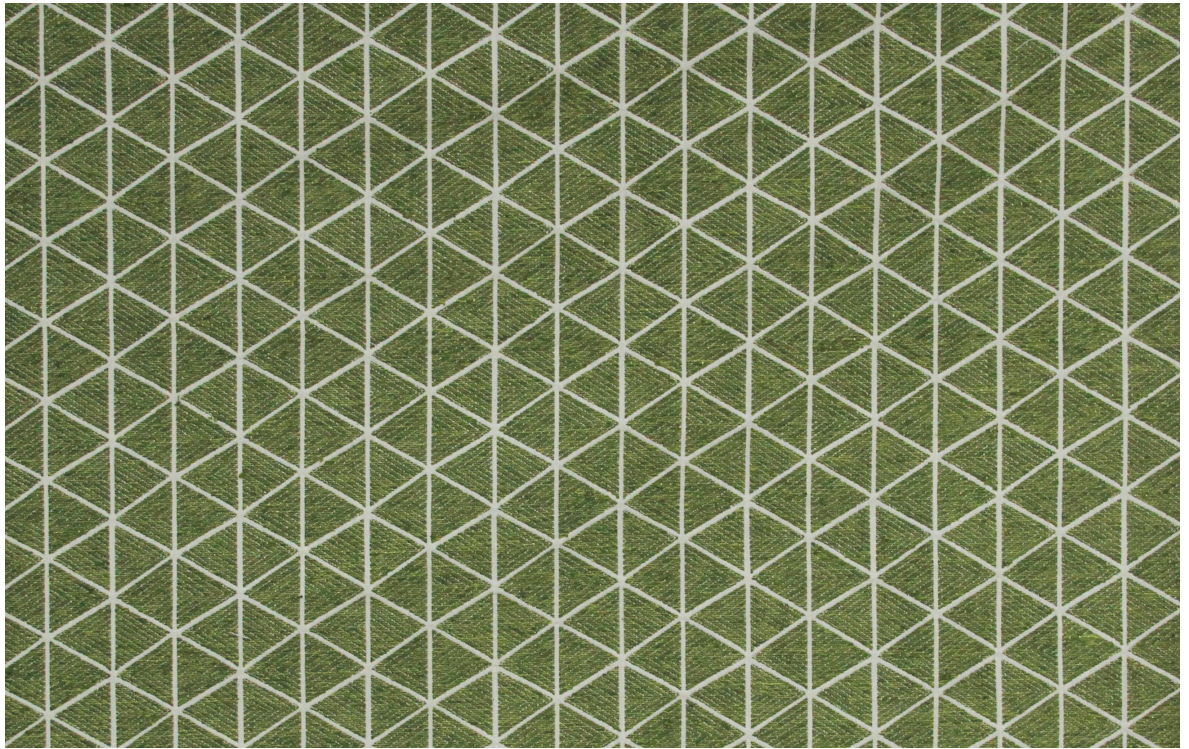
3231/05



3231/06



3231/07



## KATUN

### Geometric motion expressed in bold hues

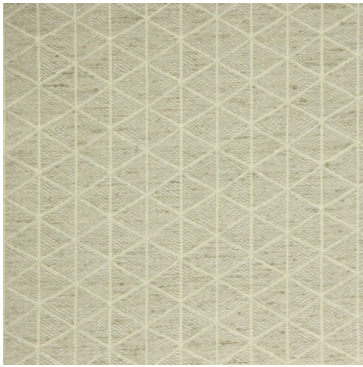
KATUN is a jacquard upholstery fabric that brings a crisp geometric rhythm to interiors with its diamond and triangle pattern laid out in an all-over grid. Made from a durable poly-cotton blend, it is ideal for upholstery and cushions, combining strength with a soft hand feel.

#### Keywords:

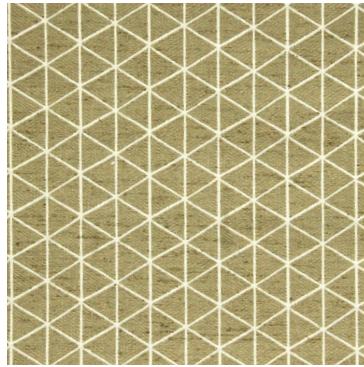
Jacquard, upholstery, geometric, diamond, triangle, all-over grid, polycotton, bold, playful palette

Article Reference	KATUN 3232			
No. of Colors	08			
Width (+/-)	145cm (57")			
Repeat (+/-)	Vertical	4.50cm	Horizontal	7.00cm
Composition	34% Cotton, 66% Polyester			
Weight (+/-)	357 GSM			
Abrasion Resistance	35,000 Martindale			
Usage	Upholstery, Cushion			
Care Instructions				

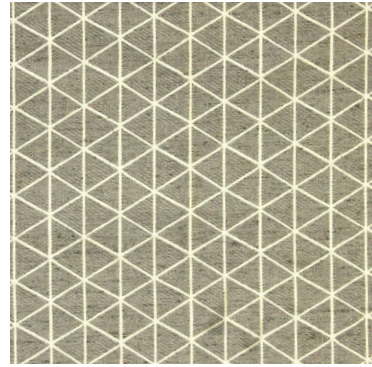
# KATUN 3232



3232/01



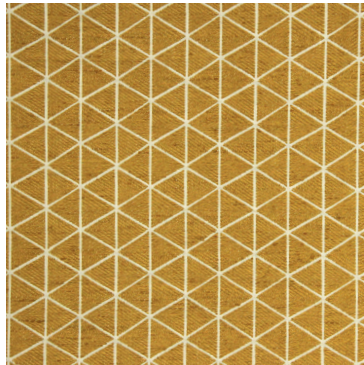
3232/02



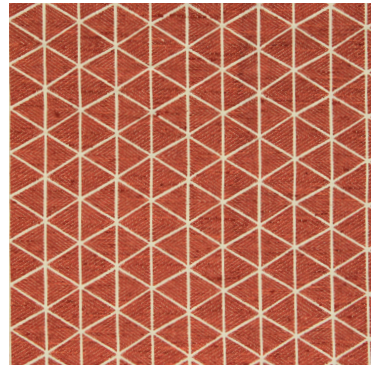
3232/03



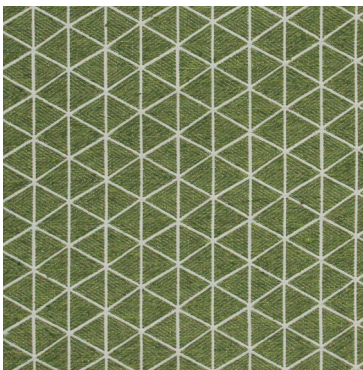
3232/04



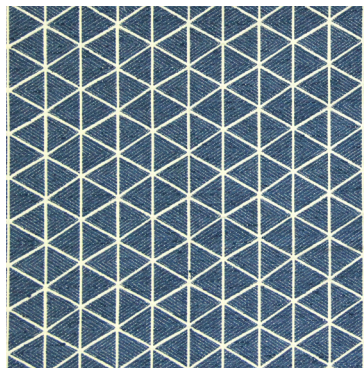
3232/05



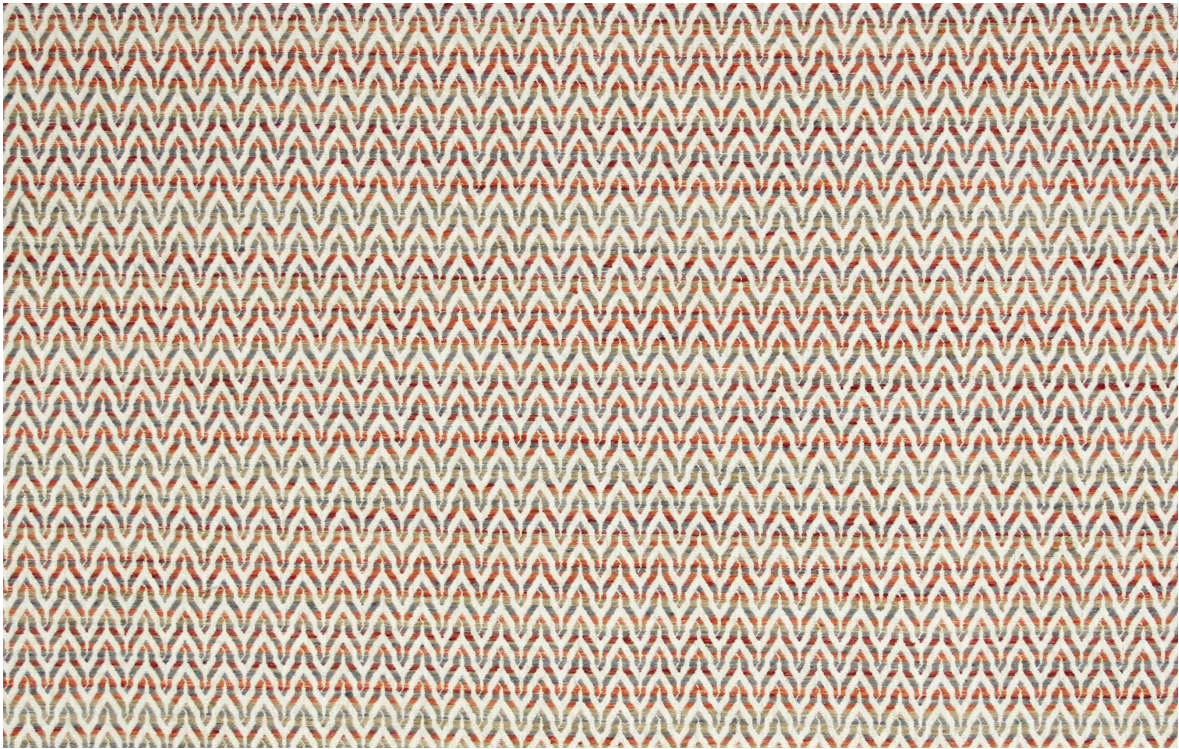
3232/06



3232/07



3232/08



## MOMEN

### A moment of rugged texture in zig-zag rhythm

MOMEN is woven with multicolored wefts in a dynamic abstract chevron pattern. The zigzag design creates a vibrant visual rhythm, while the yarn-dyed technique ensures long-lasting color integrity. Composed of a soft yet durable blend of cotton, polyester, and linen, MOMEN is perfect for domestic upholstery and accent cushions.

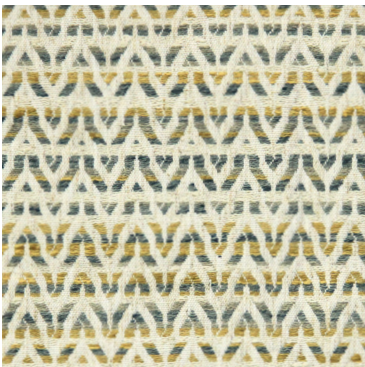
**Keywords:**

Multicolored, abstract, chevron, yarn dyed, vibrant, poly-linen-cotton, upholstery, cushions.

Article Reference	MOMEN 3233			
No. of Colors	06			
Width (+/-)	143cm (56")			
Repeat (+/-)	Vertical	14.50cm	Horizontal	2.25cm
Composition	16% Cotton, 79% Polyester, 5% Linen			
Weight (+/-)	470 GSM			
Abrasion Resistance	30,000 Martindale			
Usage	Upholstery, Cushion			
Care Instructions				



3233/01



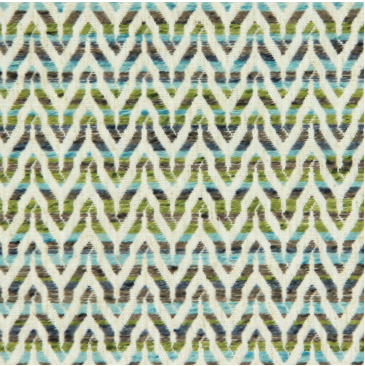
3233/02



3233/03



3233/04



3233/05



3233/06



## PARTHI

### Artisanal charm reimaged in a classic stripe

PARTHI is a richly textured upholstery fabric that showcases horizontal stripes woven with multicolored wefts. The interplay of neutral and inky tones is enhanced by a robust polyester blend, ensuring exceptional performance and refined appeal for sofas, lounge chairs, and rustic-modern cushions.

#### Keywords:

Textured, upholstery, horizontal stripes, multicolored wefts, neutral and inky tones, blend.

Article Reference	PARTHI 3234			
No. of Colors	06			
Width (+/-)	146cm (57")			
Repeat (+/-)	Vertical	14.00cm	Horizontal	7.00cm
Composition	89% Polyester, 6% Linen, 5% Viscose			
Weight (+/-)	525 GSM			
Abrasion Resistance	35,000 Martindale			
Usage	Upholstery, Cushion			
Care Instructions				



3234/01



3234/02



3234/03



3234/04



3234/05



3234/06



### PAMBA

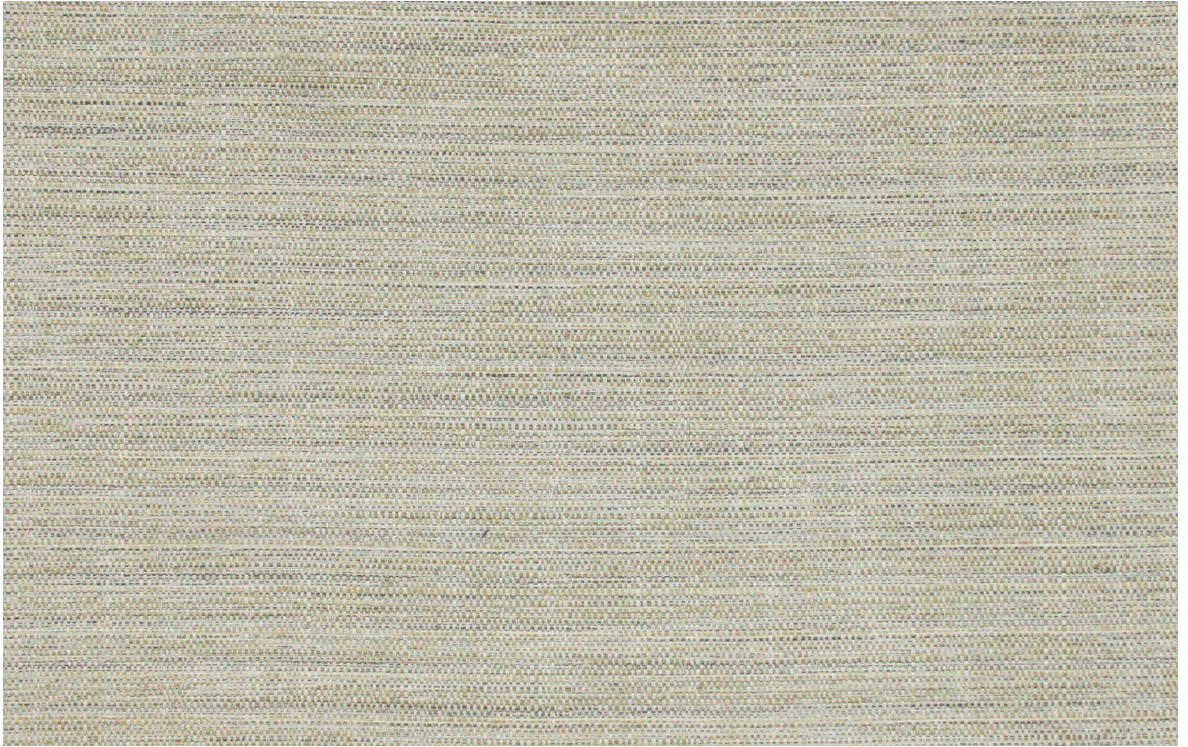
**Effortlessly grounded in soft, textured simplicity.**

PAMBA is a textured plain that embodies a natural linen look and feel. Crafted from a high-performance polyester-linen blend, it's designed for general domestic upholstery and cushions. The subtle irregularity in the weave gives the surface a handcrafted appeal, making it a versatile choice for both modern and traditional spaces seeking warmth through minimalism.

**Keywords:**

Textured, plain, linen-look, high-performance, poly-linen, general domestic upholstery, cushions.

Article Reference	PAMBA 3235			
No. of Colors	01			
Width (+/-)	146cm (57")			
Repeat (+/-)	Vertical	N/A	Horizontal	N/A
Composition	93% Polyester, 7% Linen			
Weight (+/-)	434 GSM			
Abrasion Resistance	60,000 Martindale			
Usage	Upholstery, Cushion			
Care Instructions				



## PAMUK

### Understated structure with a softened edge.

PAMUK is a subtly structured fabric featuring a horizontal weave enriched with gentle tonal variation. Made from a durable polyester-linen blend, its textured appearance and calm linearity bring an organic rhythm to furniture pieces like sofas, armchairs and cushions. The dry hand feel and natural finish evoke a sense of quiet refinement, making it ideal for interiors that blend contemporary form with earthy softness.

#### Keywords:

Structured, jacquard, horizontal, tonal, poly-linen, organic rhythm, furniture, cushions.

Article Reference	PAMUK 3236			
No. of Colors	06			
Width (+/-)	147cm (57")			
Repeat (+/-)	Vertical	3.50cm	Horizontal	7.50cm
Composition	93% Polyester, 7% Linen			
Weight (+/-)	649 GSM			
Abrasion Resistance	30,000 Martindale			
Usage	Upholstery, Cushion			
Care Instructions				



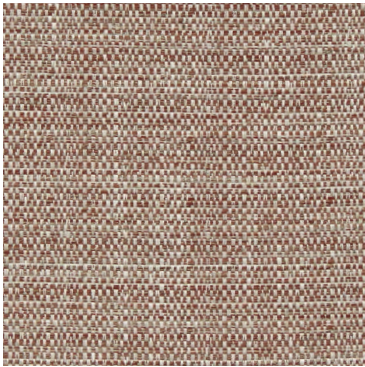
3236/01



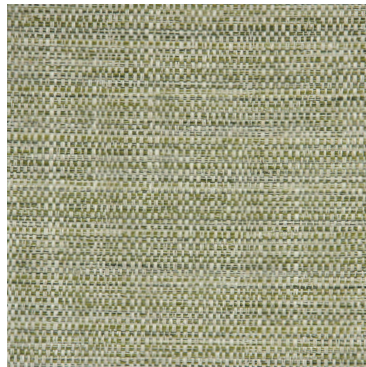
3236/02



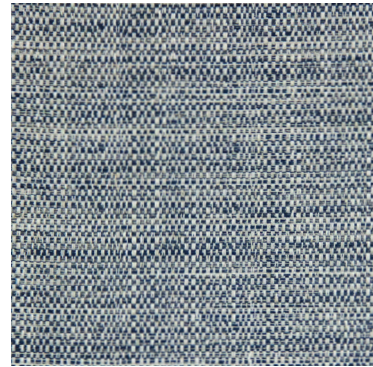
3236/03



3236/04



3236/05



3236/06



**MILO**

**Tonal play against a crosshatch of calm.**

MILO is a refined plain fabric that features a subtle crosshatch texture, offering a clean and contemporary aesthetic. Its soft tonal shifts and natural linen-like surface make it especially suited for light upholstery, cushions and drapery. The polyester composition ensures easy maintenance and everyday durability making it a serene yet stylish choice for modern interiors that value quiet texture and timeless design.

**Keywords:**

Piece dyed, crosshatch, tonal, linen-like, polyester, maintenance, durable, decorative, upholstery.

Article Reference	MILO 3237			
No. of Colors	12			
Width (+/-)	137cm (54")			
Repeat (+/-)	Vertical	N/A	Horizontal	N/A
Composition	100% Polyester			
Weight (+/-)	340 GSM			
Abrasion Resistance	40,000 Martindale			
Usage	Light Upholstery, Cushion, Drapery			
Care Instructions				



3237/01



3237/02



3237/03



3237/04



3237/05



3237/06



3237/07



3237/08



3237/09



3237/10



3237/11



3237/12

VFM  
DESIGN

[www.vfm-design.com](http://www.vfm-design.com)

**FOR ENQUIRIES:**

**Europe:**  
[office@baumann.co.at](mailto:office@baumann.co.at)

**USA:**  
[office@baumanndekor.com](mailto:office@baumanndekor.com)

**Middle East:**  
[office@warpsandwefts.com](mailto:office@warpsandwefts.com)

**India:**  
[office@consilioresources.com](mailto:office@consilioresources.com)