



CORINNA

100% IFR Embroideries

Curated by

baumann
dekor

FINE AUSTRIAN FABRICS



CORINNA

A cruising experience with IFR Embroideries

Corinna is a mesmerizing collection of **Inherently Flame Retardant (IFR)** embroideries that blend artistry with innovation and safety. Embroidery, with its ability to bring texture, richness, and artisanal beauty to textiles, has long been admired in interiors—even in cruise and hospitality spaces, though often without meeting flame safety standards. Corinna bridges that gap, bringing the elegance of embroidery into high-performance marine and hospitality interiors for the very first time!

The designs took shape drawing inspiration from vibrant tropical flora of the Caribbean and serene beauty of the sea, showcasing eye-catching patterns and seascapes with a commanding presence. From organic, free-flowing motifs to bold geometric designs, each fabric is crafted using a variety of embroidery techniques on IFR base fabrics.

A dynamic and engaging colour palette makes 'Corinna' a true showstopper, effortlessly elevating any interior that it adorns. Perfectly balancing elegance and functionality, fabrics in the Corinna collection are the ultimate choice for sophisticated spaces in cruise ships and hotels that seek splendour and beauty with high performance and safety.

Salient Features

Inherently Flame Retardant (IFR) – Both the base fabric and embroidery threads are IFR, ensuring lifelong fire resistance and safety.

First and Only such collection of its kind!!!

Innovative New Raw Material Development – Special flame-retardant yarns developed for use for embroidery.

Nature-Inspired Designs – Features designs and colours influenced by the Caribbean's tropical trees, lush foliage, and the serene beauty of the sea.

Bold Geometric Patterns – Striking geometric motifs complement the organic elements, adding a modern yet timeless touch.

Diverse Embroidery Techniques – Showcases intricate craftsmanship using various advanced embroidery methods for rich texture and layered elegance.

Vibrant Color Palette – A dynamic and engaging range of colors enhances the collection's visual appeal.

A Functional Showstopper! – Perfectly balancing aesthetics with performance, eloquent elegance of Collection Corinna can enrich the ambience of any sophisticated interior setup.

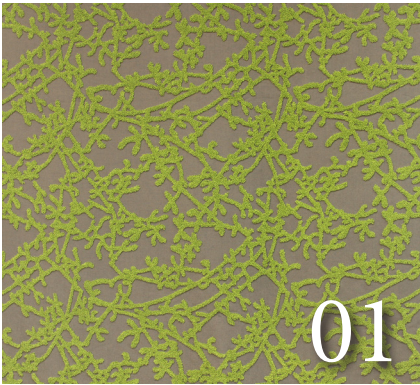
Versatile Applications – Suitable for cruise and hospitality industry, as well as high-end residential spaces in multiple way- as drapes, cushions, light upholsteries and decorative pieces or on walls.

Flexibility – 12 unique stock designs, with flexibility to offer customised designs and colourways, to suit varied design intents and mood boards.

Sustainable Solution – Long lasting, fewer replacements, less waste, low impact raw materials, easily recyclable.

CORINNA

100% IFR Embroideries



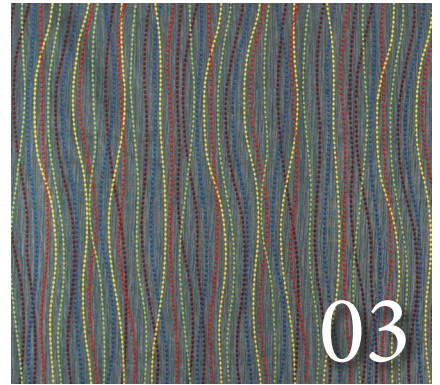
01

CELESTIAL



02

AROYA



03

CARNIVAL



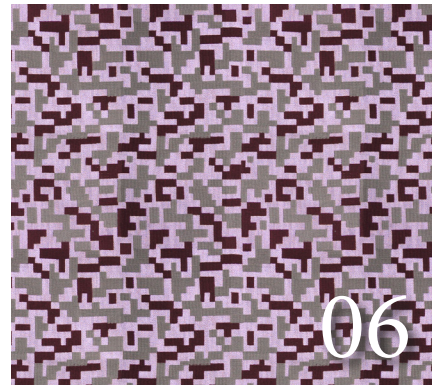
04

QUEEN



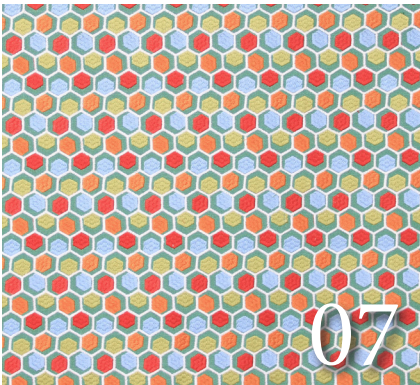
05

CELEBRITY



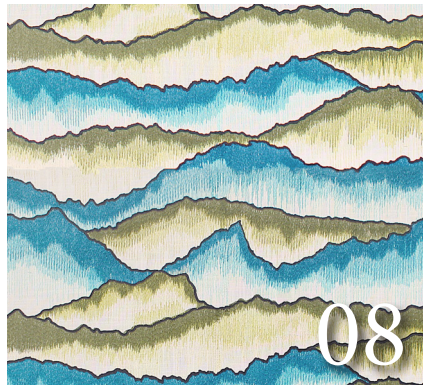
06

EPIC



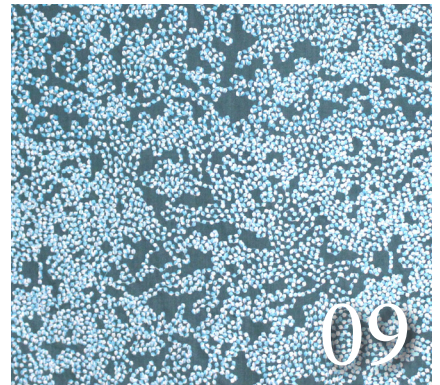
07

AZMARA



08

AURORA



09

AIDA



10

CARIBBEAN



11

PRINCESS



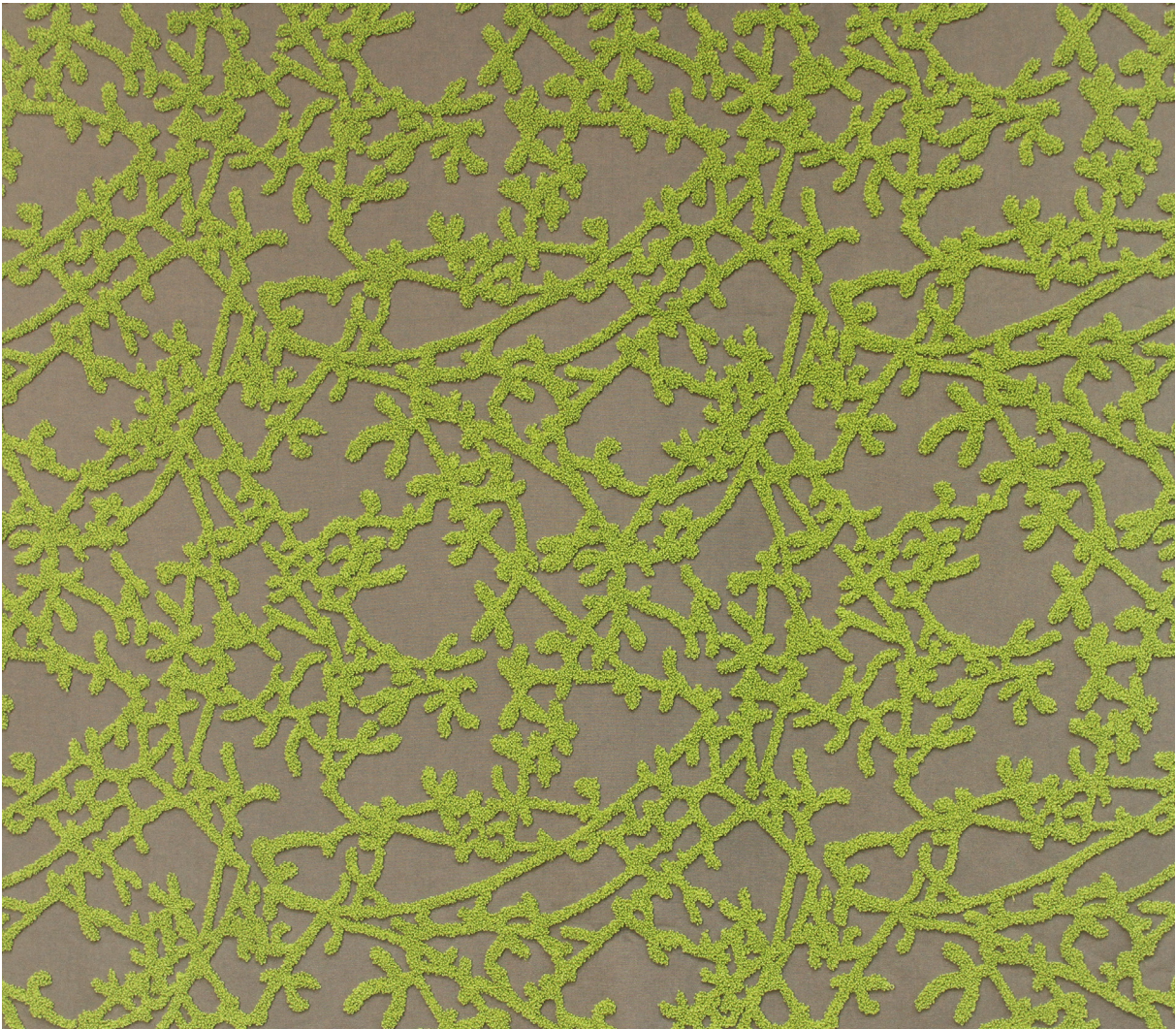
12

VIKING



20001/01






CELESTIAL



Nature's silhouette in safe elegance

Featuring a natural thicket, with interlacing branches mimicking the dense, organic growth of wild shrubs, this fabric uses a unique toweling embroidery technique to create a rich, tactile texture. The earthy khaki base pairs harmoniously with fresh grass-green threads, making it ideal for spaces seeking a balance between organic inspiration and refined style. Its inherent flame retardancy makes Celestial ideal for hospitality, cruise, and residential spaces where safety meets style.

Keywords: Thicket, interlacing branches, organic, toweling embroidery, tactile, khakhi, fresh, green, hospitality, cruise, residential, IFR.

Article Reference	CELESTIAL 20001/01		
Base Reference	O4213/190		
Overall Width (+/-)	140 cm (55")	Usable Width (+/-)	138 cm (54")
Composition	100% IFR Polyester	Weight (+/-)	810 GLM
Repeat (+/-)	Vertical	40 cm (15.5")	Horizontal 44 cm (17")
Usage	Decorative, Light Upholstery		
FR Standard	Meets International FR standards. (Please contact us for more info.)		
Care Instructions	    		



Dynamic patterns with a play of color and form

Aroya – where intricate circular patterns meet the elegance of negative ogee spaces. Set against a dark, dramatic base, the colorful embroidery creates a lively rhythm that enlivens draperies, wall panels, and soft furnishings. Crafted for demanding environments, Aroya is inherently flame retardant, making it an ideal choice for hotels, luxury lounges, and cruise ships that seek to combine vivid design statements with uncompromising safety standards.

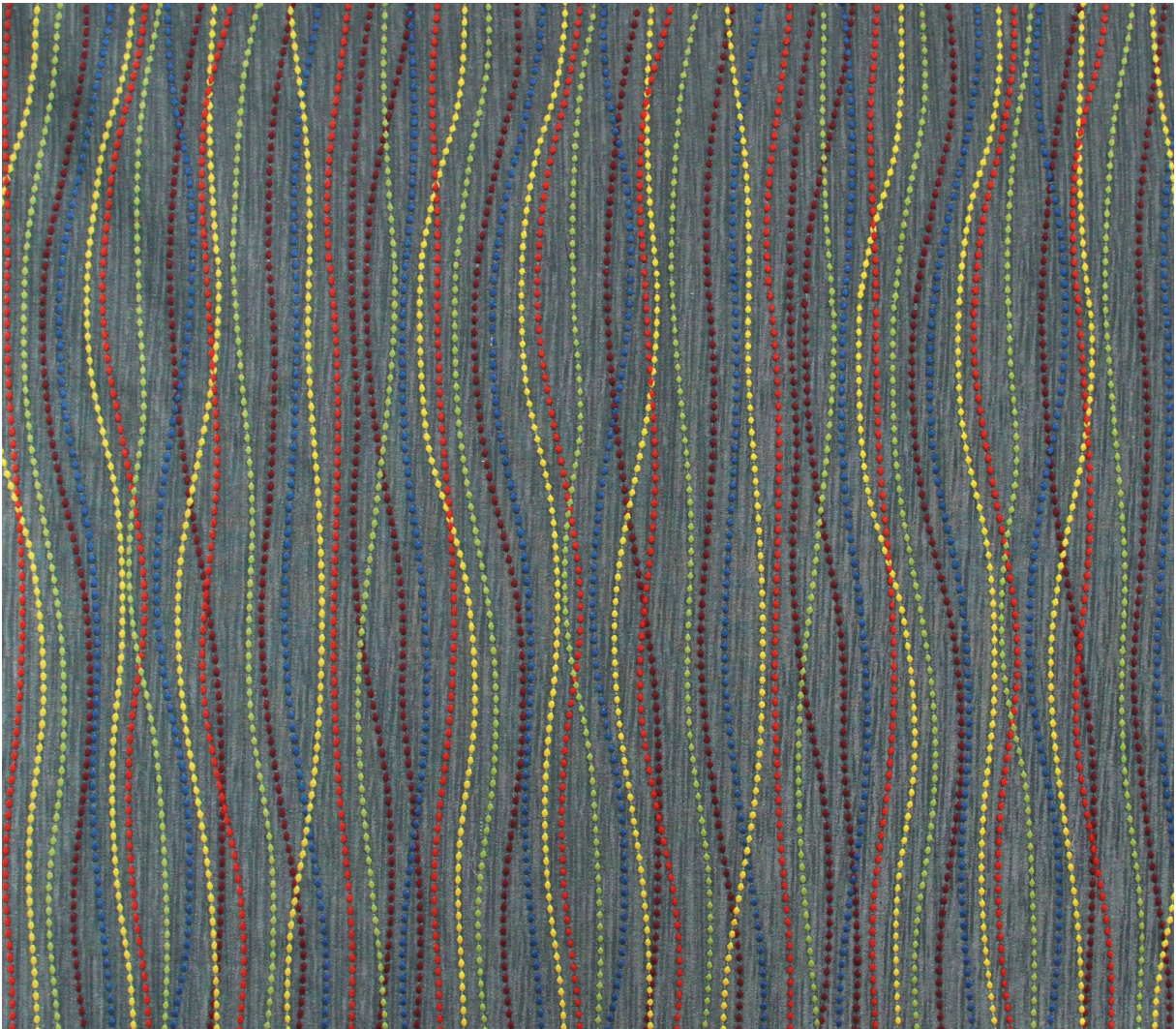
Keywords: Dynamic, circular, Ogee, dramatic, colorful, embroidery, drapery, wall panel, soft furnishings, luxury, IFR.

Article Reference	AROYA 20002/01		
Base Reference	48269/90		
Overall Width (+/-)	140 cm (55")	Usable Width (+/-)	132 cm (52")
Composition	100% IFR Polyester	Weight (+/-)	470 GLM
Repeat (+/-)	Vertical	20 cm (8")	Horizontal 33 cm (13")
Usage	Decorative		
FR Standard	Meets International FR standards. (Please contact us for more info.)		
Care Instructions			



20003/01






CARNIVAL



Playful rhythm with festive precision

CARNIVAL features vertical lines of dotted embroidery in alternating fun colors that ripple playfully across a neutral ground. The pattern creates a festive, upbeat rhythm reminiscent of streamers or musical bars. The flowy base grounded with light embroidery, in 100% FR composition, adds a joyful movement and built-in flame safety to curtains, panels, or soft furnishings in active interiors.

Keywords: Vertical lines, dotted embroidery, fun colors, neutral ground, festive, flowy, IFR, curtain panels, soft furnishings.

Article Reference	CARNIVAL 20003/01		
Base Reference	49621/029		
Width (+/-)	140 cm (55")	Usable Width (+/-)	138 cm (54")
Composition	100% IFR Polyester	Weight (+/-)	460 GLM
Repeat (+/-)	Vertical	80 cm (31.5")	Horizontal 33 cm (13")
Usage	Decorative, Light Upholstery		
FR Standard	Meets International FR standards. (Please contact us for more info.)		
Care Instructions	    		



20004/01

QUEEN



Timeless majesty, embroidered in floral folklore

QUEEN presents a bold botanical scene with stylized flowers and curling teal vines embroidered in rich red, ochre, and green. The theatrical color story and folkloric motifs lend character and warmth. Woven and embroidered in IFR polyester, it's ideal for luxurious drapery or statement décor where traditional elegance meets modern fire safety standards.

Keywords: Bold, botanical, stylized floral, vines, theatrical folklore, luxurious, drapery, statement decor, fire safety, IFR.

Article Reference	QUEEN 20004/01			
Base Reference	60002/120			
Width (+/-)	140 cm (55")	Usable Width (+/-)	138 cm (54")	
Composition	100% IFR Polyester	Weight (+/-)	750 GLM	
Repeat (+/-)	Vertical	80 cm (31.5")	Horizontal	64 cm (25")
Usage	Decorative			
FR Standard	Meets International FR standards. (Please contact us for more info.)			
Care Instructions				



20005/01






CELEBRITY



Geometric Expression with Modern Energy

Bold and dynamic, Celebrity features a striking play of geometric shapes brought to life with chain stitch embroidery. Vibrant hues and clean lines create a contemporary statement, perfect for drapery, light upholstery, and decorative accents like cushions in hospitality spaces, lounges, and modern interiors. With its inherent flame-retardant performance, Celebrity balances safety with standout style.

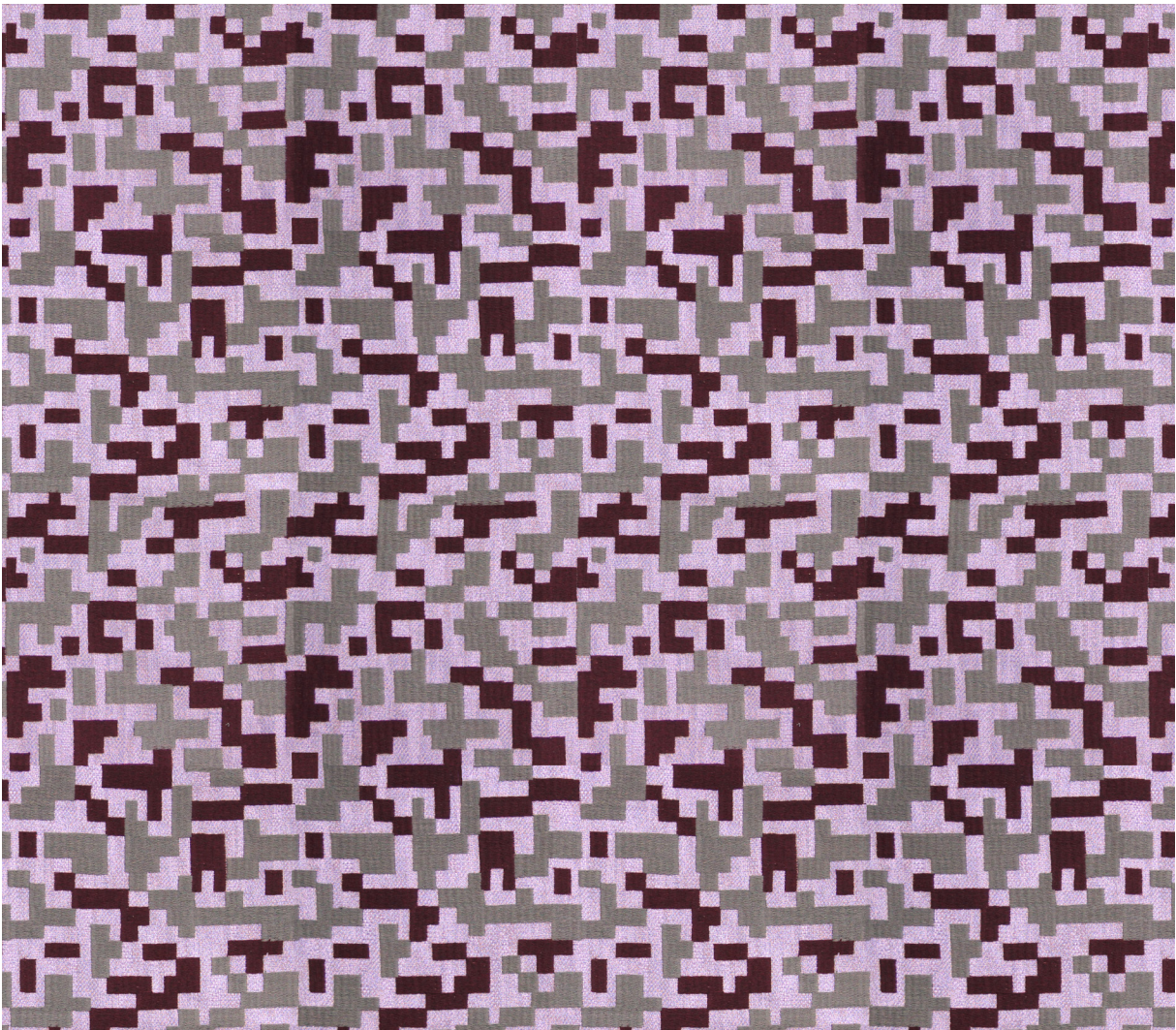
Keywords: Bold, dynamic, geometric, chain stitch embroidery, vibrant, contemporary, drapery, light upholstery, decorative, modern interiors, 100% IFR.

Article Reference	CELEBRITY 20005/01		
Base Reference	60002/120		
Width (+/-)	140 cm (55")	Usable Width (+/-)	138 cm (54")
Composition	100% IFR Polyester	Weight (+/-)	860 GLM
Repeat (+/-)	Vertical	80 cm (31.5")	Horizontal 64 cm (25")
Usage	Decorative		
FR Standard	Meets International FR standards. (Please contact us for more info.)		
Care Instructions	    		



20006/01






EPIC



Textile code for future-ready interiors

EPIC’s surface is scattered with embroidered maroon and grey blocks on a textured lavender base, resembling fractured pixels or a digital mosaic. The irregular geometry gives it a raw, contemporary aesthetic perfect for decorative and light upholstery applications in tech-forward or minimal spaces. It provides both modern visual texture and lifetime flame resistance across drapery, upholstery, or accent pieces.

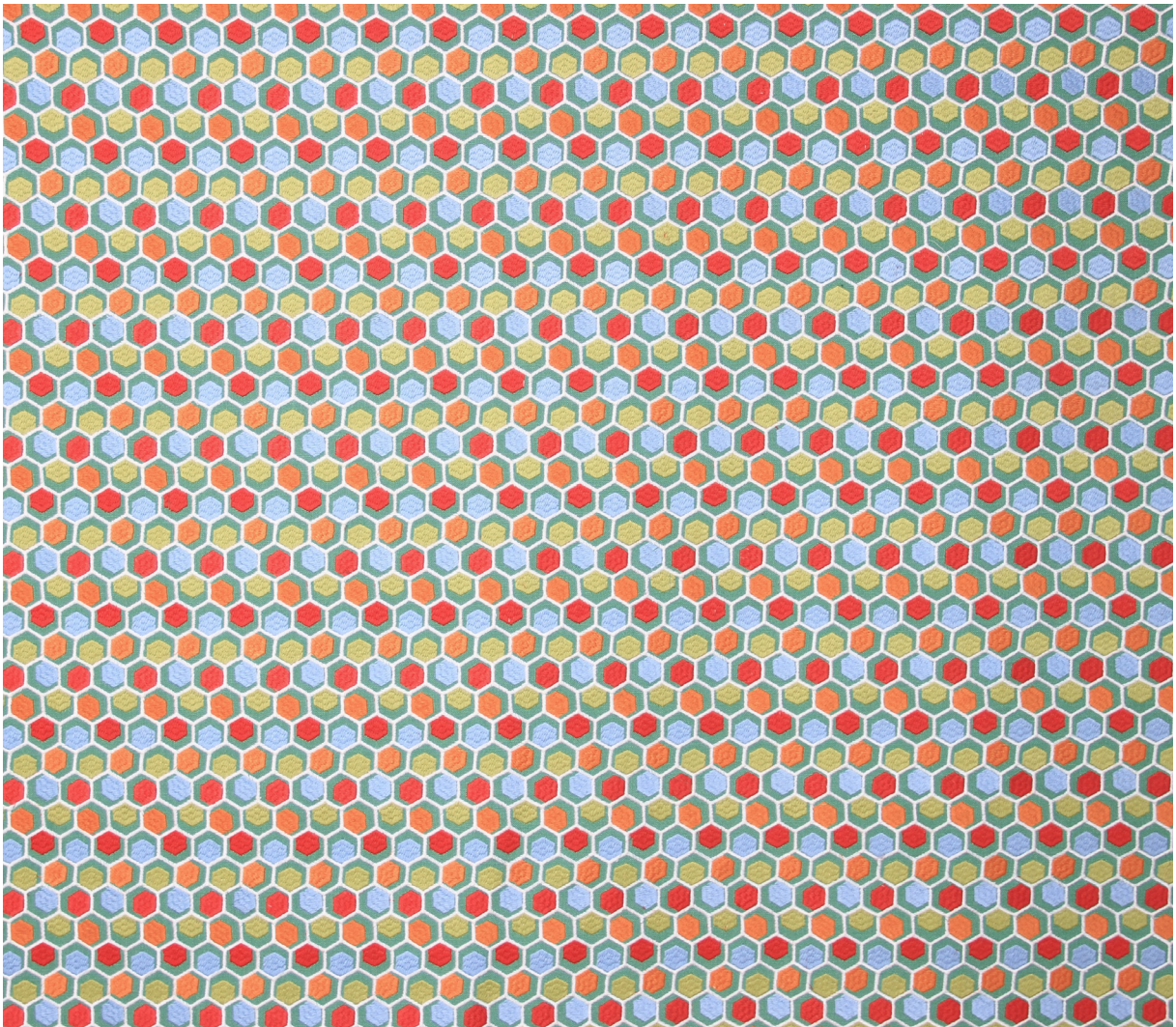
Keywords: Maroon, grey, blocks, textured base, pixels, digital mosaic, irregular geometry, tech-forward, visual texture, IFR, decorative, accent.

Article Reference	EPIC 20006/01		
Base Reference	49835/015		
Width (+/-)	136 cm (53")	Usable Width (+/-)	128 cm (50")
Composition	100% IFR Polyester		Weight (+/-)
Repeat (+/-)	Vertical	40 cm (15.5")	Horizontal
Usage	Decorative, Light Upholstery		
FR Standard	Meets International FR standards. (Please contact us for more info.)		
Care Instructions	    		



20007/01

AZMARA



A crystalline rhythm for luxe interiors

AZMARA features a structured grid of embroidered hexagons in vibrant gemstone tones, set against a lush green base. The crisp white outlines create a striking contrast, evoking the look of stylized honeycombs or the facets of a cut crystal. With its rhythmic geometry and 100% inherently flame-retardant composition, AZMARA brings clarity, color, and structural charm to modern drapery and decorative cushions.

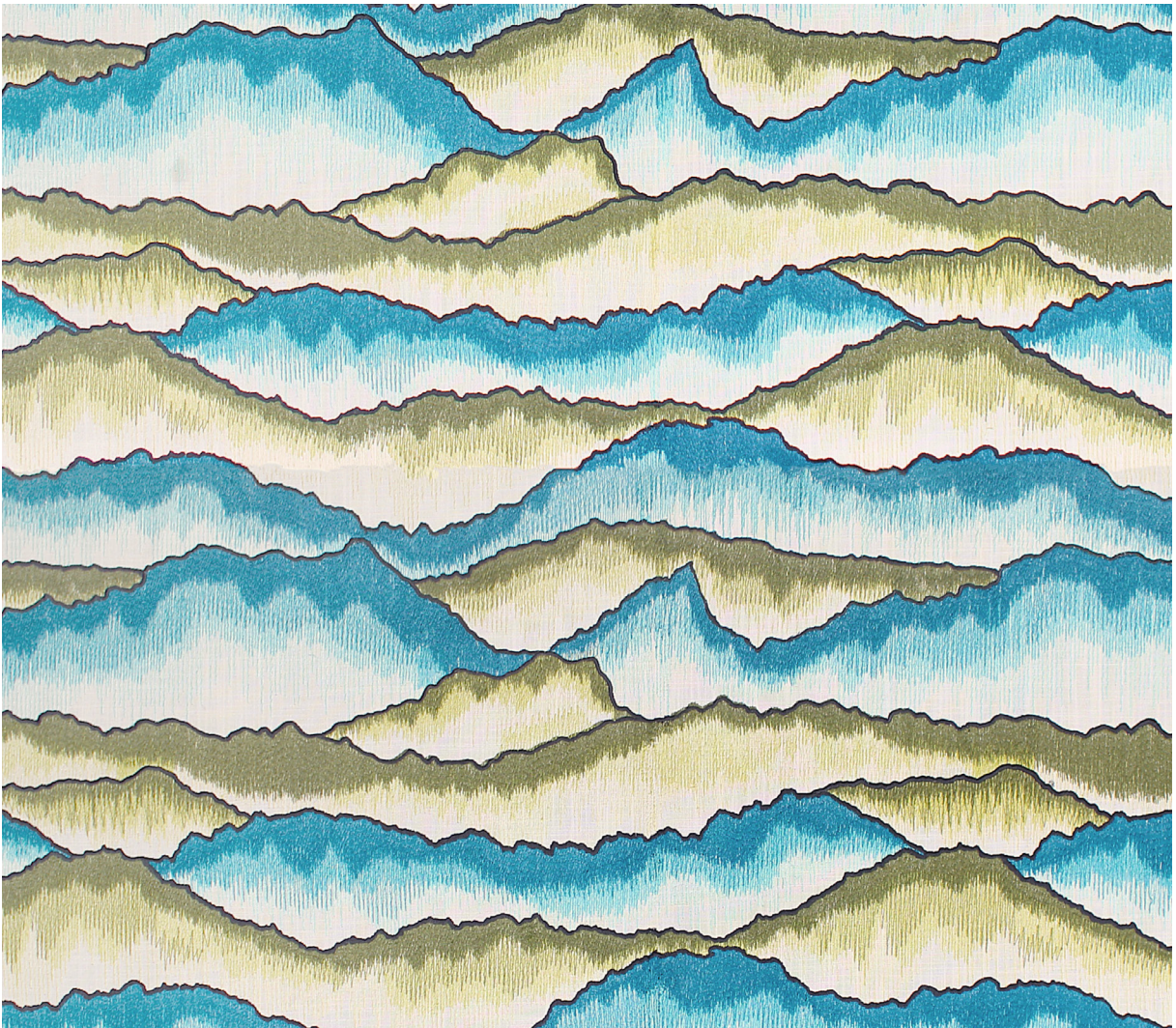
Keywords: Grid, embroidered hexagons, gemstone tones, lush green, striking contrast, stylized, cut crystal, rhythmic geometry, drapery, cushions, 100% IFR.

Article Reference	AZMARA 20007/01			
Base Reference	60003/170			
Width (+/-)	136 cm (53")	Usable Width (+/-)	128 cm (50")	
Composition	100% IFR Polyester	Weight (+/-)	640 GLM	
Repeat (+/-)	Vertical	8 cm (3")	Horizontal	5 cm (2")
Usage	Decorative			
FR Standard	Meets International FR standards. (Please contact us for more info.)			
Care Instructions				



20008/01

AURORA



Organic scapes in tranquil motion

AURORA channels natural terrain through layered embroidered bands in blue, teal, and green, forming jagged, shaded contours reminiscent of mountain ridges or ocean waves. The flowing horizontal layout brings a sense of movement and depth, making it an ideal choice for decorative cushions, wall panels, and drapery. With its immersive organic aesthetic and inherently flame-retardant composition, AURORA is perfectly suited for hospitality and cruise interiors that demand both beauty and safety.

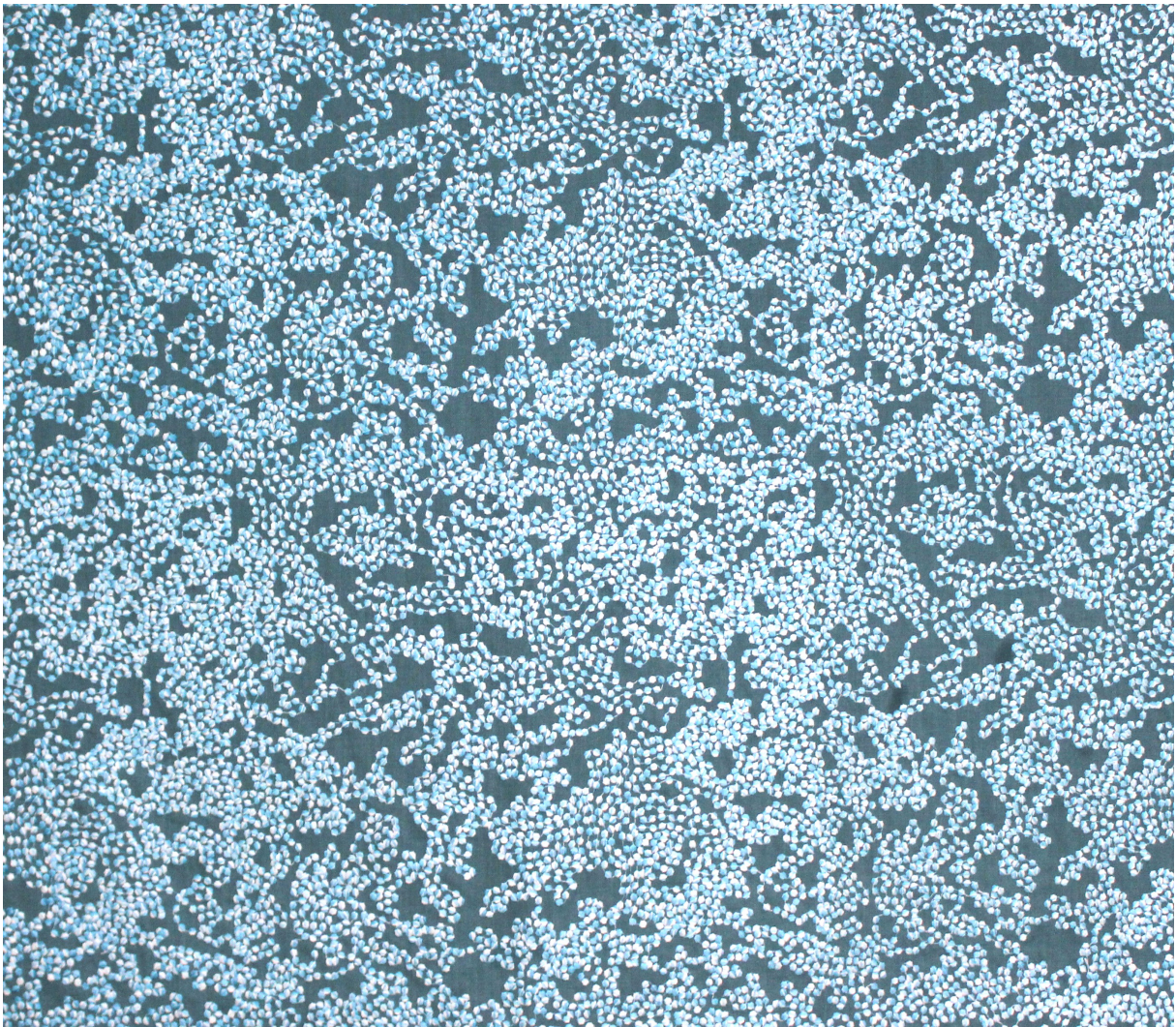
Keywords: Natural terrain, layered, embroidery, mountain ridges, ocean waves, movement depth, hospitality, cruise interiors, IFR.

Article Reference	AURORA 20008/01		
Base Reference	60004/120		
Width (+/-)	140 cm (55")	Usable Width (+/-)	138 cm (54")
Composition	100% IFR Polyester	Weight (+/-)	460 GLM
Repeat (+/-)	Vertical	40 cm (15.5")	Horizontal 65 cm (25.5")
Usage	Decorative		
FR Standard	Meets International FR standards. (Please contact us for more info.)		
Care Instructions			



20009/01

AIDA



Delicate texture, subtle movement

Inspired by scattered petals, Aida presents an elegant, all-over embroidery pattern that brings soft texture and gentle movement to any setting. Crafted with yarns in soft blue tones against a deep base makes it ideal for creating serene yet sophisticated spaces in hotels, cruise cabins, or refined residential projects. Naturally flame-retardant, Aida ensures safety without compromising on elegance.

Keywords: Scattered petals, all-over, soft texture, movement, blue tones, serene, cruise cabins, residential, IFR.

Article Reference	AIDA 20009/01		
Base Reference	60003/180		
Width (+/-)	140 cm (55")	Usable Width (+/-)	138 cm (54")
Composition	100% IFR Polyester	Weight (+/-)	640 GLM
Repeat (+/-)	Vertical	40 cm (15.5")	Horizontal 43 cm (17")
Usage	Decorative		
FR Standard	Meets International FR standards. (Please contact us for more info.)		
Care Instructions			



Tropical Whimsy Meets Refined Craft

Lush and vibrant, Caribbean celebrates tropical flora with stylized embroidered trees in warm sunset tones. Set against a calming blue backdrop, it evokes the spirit of island getaways while remaining polished enough for drapery, cushions, and decorative panels in upscale hospitality, resort, and cruise interiors. Its 100% inherent flame retardancy ensures it performs beautifully where safety is key.

Keywords: Lush, vibrant, tropical flora, stylized, trees, sunset tones, calming blue, drapery, cushions, decorative panels, resort, cruise, hospitality, 100% IFR.

Article Reference	CARIBBEAN 20010/01		
Base Reference	60005/180		
Width (+/-)	140 cm (55")	Usable Width (+/-)	138 cm (54")
Composition	100% IFR Polyester	Weight (+/-)	700 GLM
Repeat (+/-)	Vertical	80 cm (31.5")	Horizontal 64 cm (25")
Usage	Decorative, Light Upholstery		
FR Standard	Meets International FR standards. (Please contact us for more info.)		
Care Instructions			



20011/01

PRINCESS



Subtle structure, embroidered with poise and protection.

PRINCESS features delicate zigzag lines in pale tones of blush, mauve, ochre, and choco, creating a quiet sense of movement and modern geometry. The vertical composition and understated embroidery bring elegance without excess, making it perfect for lightweight drapery or minimal décor. Fully IFR compliant, PRINCESS blends softness and certified safety for serene yet refined interiors.

Keywords: Delicate, Zigzag lines, pale tones, movement, vertical, lightweight, drapery, minimal decor, IFR compliant.

Article Reference	PRINCESS 20011/01			
Base Reference	70001/029			
Width (+/-)	140 cm (55")	Usable Width (+/-)	138 cm (54")	
Composition	100% IFR Polyester	Weight (+/-)	390 GLM	
Repeat (+/-)	Vertical	40 cm (15.5")	Horizontal	64 cm (25")
Usage	Decorative			
FR Standard	Meets International FR standards. (Please contact us for more info.)			
Care Instructions				



20012/01

VIKING



Strength in symmetry, fire in color

VIKING commands attention with radiant spirals embroidered in dramatic reds, plums, and taupes, arranged in diamond formations across the surface. The dynamic geometry creates sculptural depth and a bold visual rhythm. Ideal for statement drapery, light upholstery or standout décor, VIKING is designed for high-impact interior settings where design leads with confidence.

Keywords: Radiant, spirals, dramatic colors, diamond, dynamic, geometry, bold, statement, drapery, standout decor, IFR.

Article Reference	VIKING 20012/01		
Base Reference	60002/126		
Width (+/-)	140 cm (55")	Usable Width (+/-)	138 cm (54")
Composition	100% IFR Polyester	Weight (+/-)	810 GLM
Repeat (+/-)	Vertical	20 cm (8")	Horizontal 21 cm (8")
Usage	Decorative		
FR Standard	Meets International FR standards. (Please contact us for more info.)		
Care Instructions			

baumann dekor

FINE AUSTRIAN FABRICS

BAUMANN DEKOR GmbH

Schremser Strasse 38, 3950 Gmünd, Austria
T +43 2852 9008-0 | F +43 2852 9008-209
Email: office@baumann.co.at
www.baumann.co.at

BAUMANN DEKOR USA

979 Third Avenue, Suite 518, New York, NY
10022, T: (212) 258-0688
Email: office@baumanndekorusa.com
www.baumanndekorusa.com

