

VFM DESIGN



Re Open Sesame by VFM DESIGN

| | |
|------------------|---------|
| UNITY | Page 2 |
| PLANO | Page 5 |
| INTRIGO | Page 8 |
| MESA | Page 13 |
| VELOR | Page 26 |
| ELLORA | Page 39 |
| BOTANICUM | Page 54 |

Re Open Sesame

Open the doors to this latest and exciting launch from 'VFM Design'!

'Re Open Sesame' presents seven distinct collections of coordinated designs as well as solid colors, all standing out with a rich and diverse variety of furnishing fabrics to cast a magical spell on any designed interior!

Collection Name: UNITY

An inspiring verity of shades united in plush chenille.



Whether as home décor or elegant upholstery, UNITY effortlessly exudes a sense of grandeur and style. Crafted in rich chenille in a wide variety of colors, UNITY, showcases soft luxury. It has an Easy Clean finish, making it water and stain repellent – an ideal upholstery fabric for luxury settings, ensuring both elegance and durability.

Keywords:

Classic, Luxe, Soft, Chenille, Adaptable.





UNITY

An inspiring verity of shades united in plush chenille.

Whether as home décor or elegant upholstery, UNITY effortlessly exudes a sense of grandeur and style. Crafted in rich chenille in a wide variety of colors, UNITY, showcases soft luxury. It has an Easy Clean finish, making it water and stain repellent – an ideal upholstery fabric for luxury settings, ensuring both elegance and durability.

Keywords:

Classic, Luxe, Soft, Chenille, Adaptable.



| | | | | |
|---------------------|----------------------|-----|------------|-----|
| Article Reference | Unity 3141 | | | |
| No. of Colors | 25 | | | |
| Width (+/-) | 140cms | | | |
| Repeat (+/-) | Vertical | N/A | Horizontal | N/A |
| Composition | 100% Polyester | | | |
| Weight (+/-) | 621 g/m ² | | | |
| Abrasion Resistance | +30000 Martindale | | | |
| Usage | Upholstery, Cushion, | | | |
| Care Instructions | | | | |



3141-1



3141-2



3141-3



3141-4



3141-5



3141-6



3141-7



3141-8



3141-9



3141-10



3141-11



3141-12



3141-13



3141-14



3141-15



3141-16



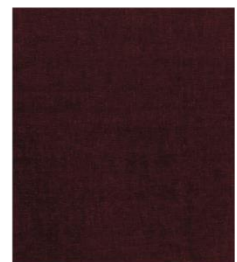
3141-17



3141-18



3141-19



3141-20



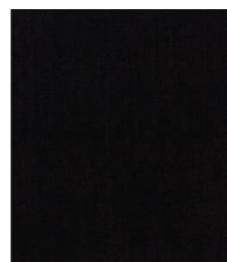
3141-21



3141-22



3141-23



3141-24



3141-25

Collection Name: PLANO

Simple, yet far from plain.

Timeless chic, PLANO, features 24 rustic shades of an effortless texture that lightens and brightens any interior. PLANO's versatility allows it to complement a variety of interior styles, from traditional to modern and everything in between.

Keywords:

Rustic, plain, delicate, 24 colors





PLANO

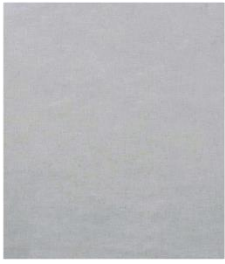
Simple, yet far from plain.

Timeless chic, PLANO, features 24 rustic shades of an effortless texture that lightens and brightens any interior. PLANO's versatility allows it to complement a variety of interior styles, from traditional to modern and everything in between.

Keywords:

Rustic, plain, delicate, 24 colors

| | | | | |
|---------------------|----------------------|-----|------------|-----|
| Article Reference | Plano 3142 | | | |
| No. of Colors | 24 | | | |
| Width (+/-) | 140cms | | | |
| Repeat (+/-) | Vertical | N/A | Horizontal | N/A |
| Composition | 100% Polyester | | | |
| Weight (+/-) | 204 g/m ² | | | |
| Abrasion Resistance | N/A | | | |
| Usage | Draperies, Cushion | | | |
| Care Instructions | | | | |



3142-1



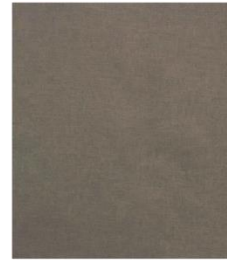
3142-2



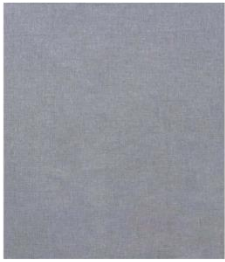
3142-3



3142-4



3142-5



3142-6



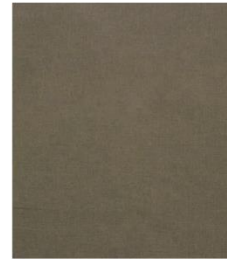
3142-7



3142-8



3142-9



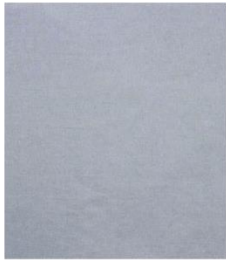
3142-10



3142-11



3142-12



3142-13



3142-14



3142-15



3142-16



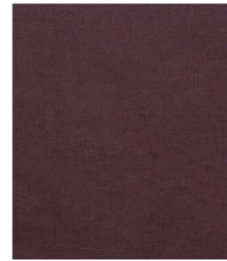
3142-17



3142-18



3142-19



3142-20



3142-21



3142-22



3142-23



3142-24

Collection Name: INTRIGO

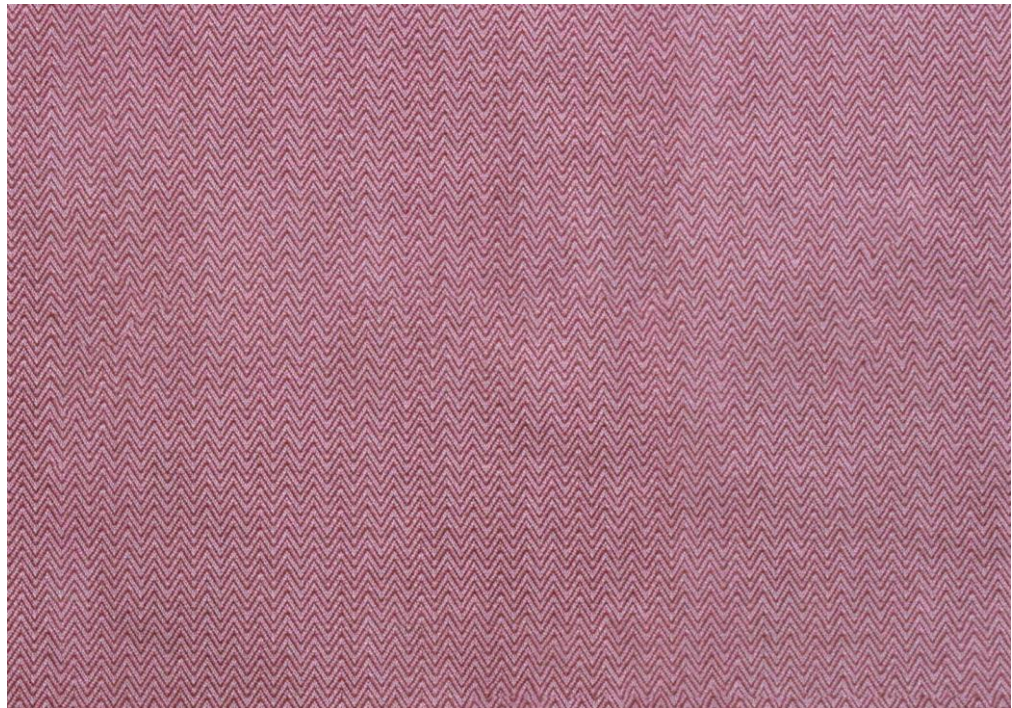
Get in the Groove with ZIGO and WIGO!

INTRIGO embraces the concept of unity in diversity, presenting a thoughtfully created duo that brings harmony to diverse design choices. Printed on chenille base, ZIGO and WIGO, in a delightful pas de deux, create a captivating symphony of design and colors suitable for decorative furnishings.

Keywords:

Printed, chevron, texture, geometric





ZIGO

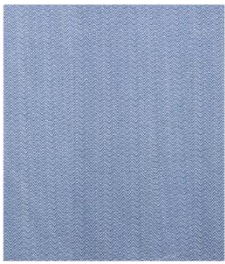
Tune into a playful rhythm.

A fun, mini chevron pattern printed on a sturdy yet soft chenille base, ZIGO, embodies a rhythm that beautifully compliments the playful spirit of any space. The 2-tone color play, crafted in a variety of colors, adds a touch of whimsy and character to any decorative space.

Keywords:

Chevron, print, zig zag, 2-tone, 15 colors.

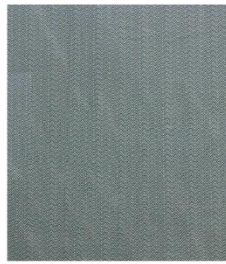
| | | | | |
|---------------------|----------------------|--------|------------|------|
| Article Reference | Zigo 3143 | | | |
| No. of Colors | 15 | | | |
| Width (+/-) | 140cms | | | |
| Repeat (+/-) | Vertical | 1.5cms | Horizontal | 2cms |
| Composition | 100% Polyester | | | |
| Weight (+/-) | 415 g/m ² | | | |
| Abrasion Resistance | +30000 | | | |
| Usage | Cushion, Upholstery | | | |
| Care Instructions | | | | |



3143-1



3143-2



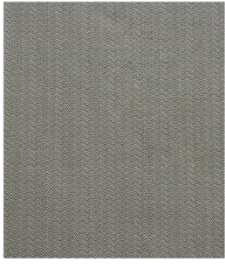
3143-3



3143-4



3143-5



3143-6



3143-7



3143-8



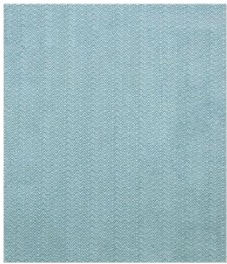
3143-9



3143-10



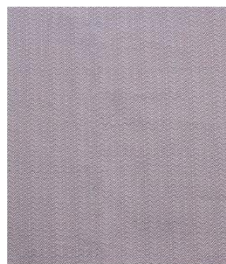
3143-11



3143-12



3143-13



3143-14



3143-15



WIGO

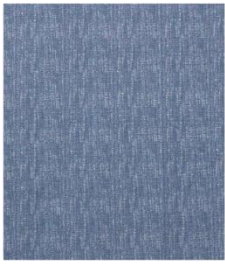
Indulge in the cozy and rugged feel.

A subtle visual texture printed on a woven chenille base, WIGO, transforms interiors into a charming space with its understated sophistication. WIGO's irregularity and artistic appeal make it a versatile choice for a verity of applications, including cushions and upholstery.

Keywords:

Print, visual texture, irregular, 15 colors.

| | | | | |
|---------------------|----------------------|------|------------|--------|
| Article Reference | Wigo 3144 | | | |
| No. of Colors | 15 | | | |
| Width (+/-) | 140cms | | | |
| Repeat (+/-) | Vertical | 9cms | Horizontal | 9.5cms |
| Composition | 100% Polyester | | | |
| Weight (+/-) | 415 g/m ² | | | |
| Abrasion Resistance | +30000 Martindale | | | |
| Usage | Cushion, Upholstery | | | |
| Care Instructions | | | | |



3144-1



3144-2



3144-3



3144-4



3144-5



3144-6



3144-7



3144-8



3144-9



3144-10



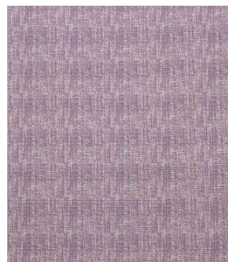
3144-11



3144-12



3144-13



3144-14



3144-15

Collection Name: MESA

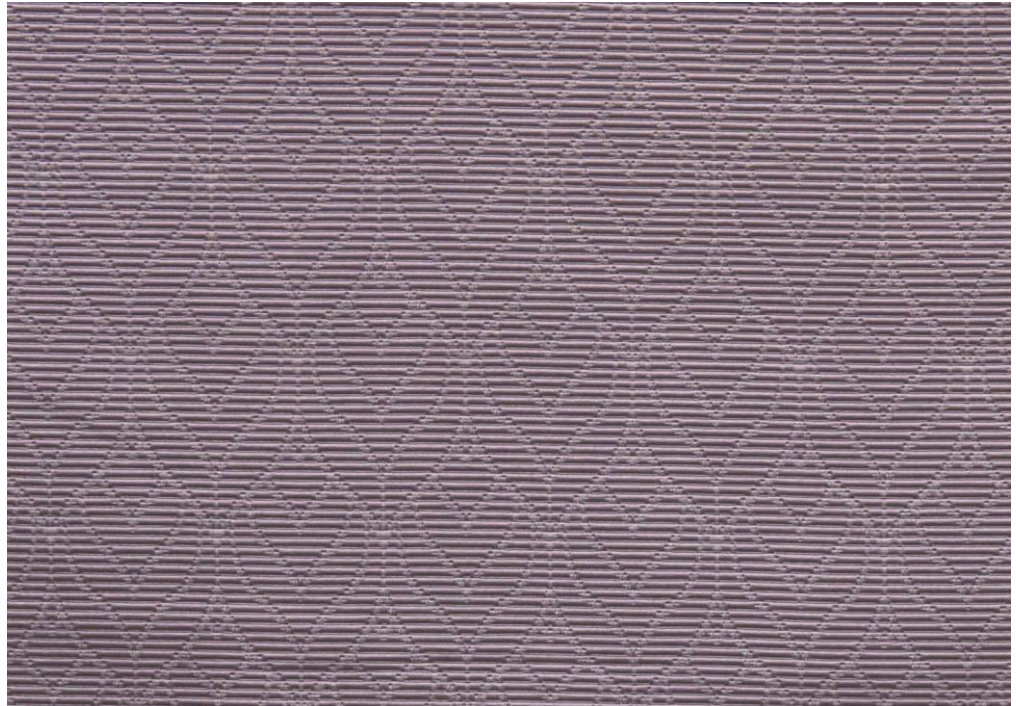
Classic motifs expressed in a lush weave.

Indulge in the radiant charm of the MESA collection, where shiny yarns intertwine in satin weave to create classic, nature-inspired designs providing an unparalleled sensory experience. Embrace MESA's royal designs to elevate your home furnishings with splendor and sophistication.

Keywords:

Nature-inspired, lustrous, opulent, satin, classic










FOLIO

Abstracted foliage laid out gracefully.

An abstract representation of leaves, complemented with a linear woven texture and highlighted by lustrous yarns, FOLIO, adds an elegant charm to interiors. It embodies a splendid fusion of texture, pattern, and shine infusing luxury into any creative project.

Keywords:

Abstract, nature, lustrous, striped/ribbed

| | | | | |
|---------------------|---|--------|------------|------|
| Article Reference | Folio 3145 | | | |
| No. of Colors | 10 | | | |
| Width (+/-) | 140cms | | | |
| Repeat (+/-) | Vertical | 8.5cms | Horizontal | 4cms |
| Composition | 100% Polyester | | | |
| Weight (+/-) | 299 g/m ² | | | |
| Abrasion Resistance | N/A | | | |
| Usage | Drapery, Cushion | | | |
| Care Instructions |      | | | |



3145-1



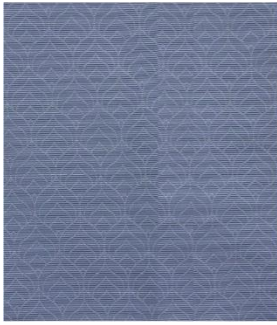
3145-2



3145-3



3145-4



3145-5



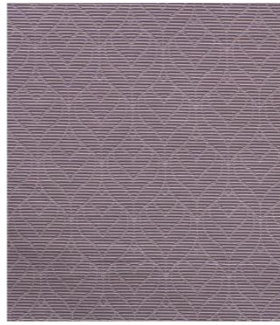
3145-6



3145-7



3145-8



3145-9



3145-10



MOSSY

Embrace the soft feel of blooming moss.

An invitation to dive into the depths of its design, MOSSY exhibits the tranquility of moss-covered surfaces, on a glossy, luxurious base. Mossy's versatile texture infuses interiors with a lavish touch, whether used for drapery or cushions.

Keywords:

Moss, natural, shiny, abstract.

| | | | | |
|---------------------|---------------------------|---------|------------|-------|
| Article Reference | Mossy 3146 | | | |
| No. of Colors | 10 | | | |
| Width (+/-) | 140 cms | | | |
| Repeat (+/-) | Vertical | 36.5cms | Horizontal | 35cms |
| Composition | 80% Polyester, 20% Cotton | | | |
| Weight (+/-) | 250 g/m ² | | | |
| Abrasion Resistance | N/A Martindale | | | |
| Usage | Drapery, Cushion, | | | |
| Care Instructions | | | | |



3146-1



3146-2



3146-3



3146-4



3146-5



3146-6



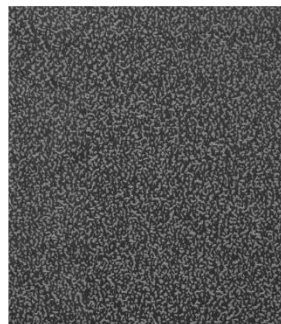
3146-7



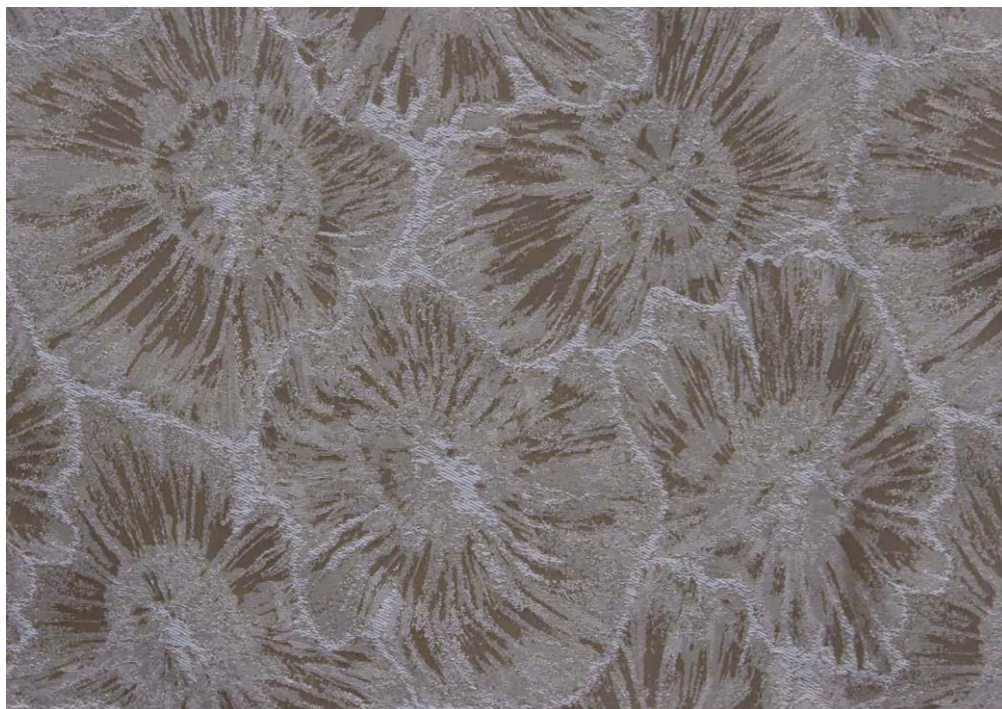
3146-8



3146-9



3146-10



FLORA

A resplendent bed of florals.

Taking inspiration from the grandeur and elegance of flowers, FLORA makes a bold and eye-catching statement with its intricacy. The weaving process elevates the design with its interplay of natural and man-made fibers imparting a glossy and matte texture, making the resultant fabric visually stimulating, akin to a hand-painted masterpiece.

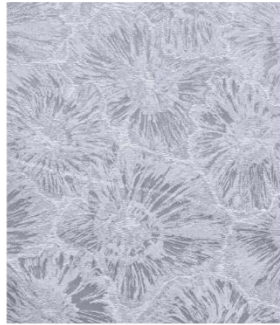
Keywords:

Floral, nature, bold, hand-painted look

| | | | | |
|---------------------|---------------------------|----|------------|----|
| Article Reference | Flora 3147 | | | |
| No. of Colors | 10 | | | |
| Width (+/-) | 140 cms | | | |
| Repeat (+/-) | Vertical | 60 | Horizontal | 35 |
| Composition | 72% Polyester,28% Cotton, | | | |
| Weight (+/-) | 279 g/m ² | | | |
| Abrasion Resistance | N/A | | | |
| Usage | Drapery, Cushion | | | |
| Care Instructions | | | | |



3147-1



3147-2



3147-3



3147-4



3147-5



3147-6



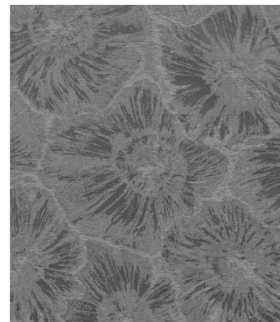
3147-7



3147-8



3147-9



3147-10



RAINY

Soak in the ecstatic experience of rain.

Rainy evokes the warm embrace of cherished memories, while the imagery of dripping water along a glass surface creates a serene and contemplative ambiance. Woven in lush satin, the fabric fosters a relaxing and thought-provoking setting, creating engaging interiors.

Keywords:

Dripping water, shiny, thought-provoking, relaxing, satin.

| | | | | |
|---------------------|---------------------------|-------|------------|-------|
| Article Reference | Rainy 3148 | | | |
| No. of Colors | 10 | | | |
| Width (+/-) | 140 cms | | | |
| Repeat (+/-) | Vertical | 38cms | Horizontal | 34cms |
| Composition | 80% Polyester, 20% Cotton | | | |
| Weight (+/-) | 250 g/m ² | | | |
| Abrasion Resistance | N/A | | | |
| Usage | Drapery, Cushion | | | |
| Care Instructions | | | | |



3148-1



3148-2



3148-3



3148-4



3148-5



3148-6



3148-7



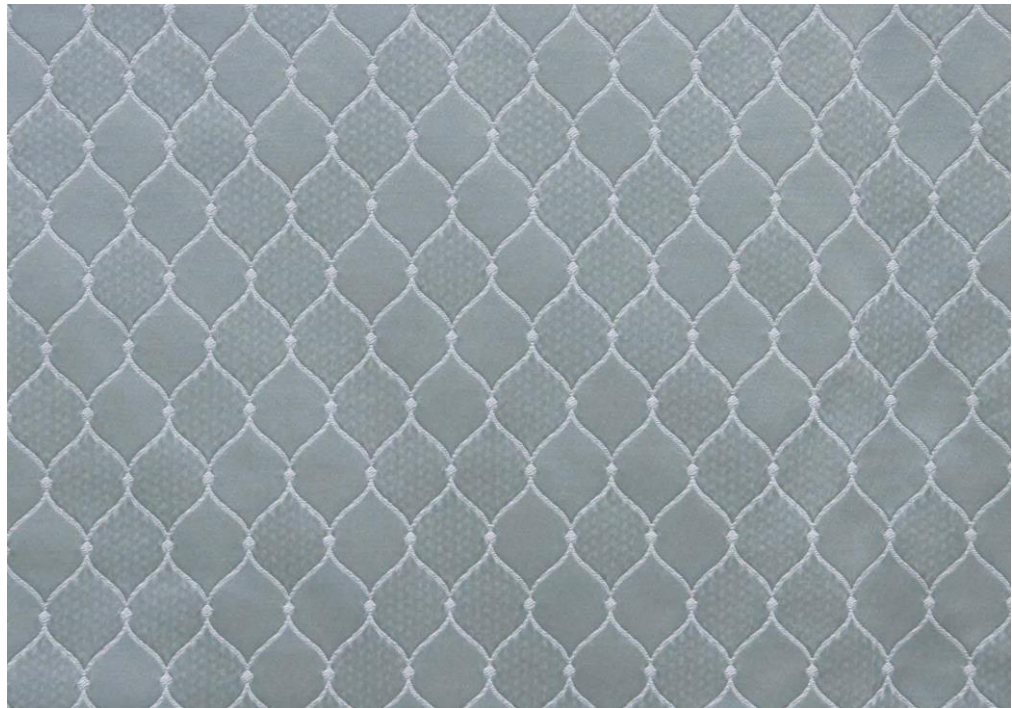
3148-8



3148-9



3148-10



CURVY

Classic satin with a graceful curvilinear pattern.

CURVY, features a classic Ogee pattern on a luxuriously soft satin fabric. Its subtle texture and depth add a layer of complexity, giving it a sophisticated and charming vibe.

Keywords:

Abstract, flow, Ogee, satin

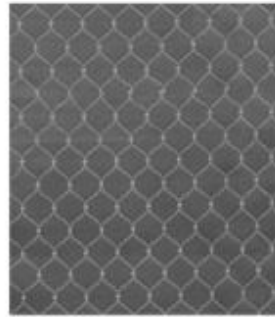
| | | | | |
|---------------------|---------------------------|------|------------|------|
| Article Reference | Curvy 3149 | | | |
| No. of Colors | 10 | | | |
| Width (+/-) | 140 cms | | | |
| Repeat (+/-) | Vertical | 5cms | Horizontal | 3cms |
| Composition | 72% Polyester, 28% Cotton | | | |
| Weight (+/-) | 279 g/m ² | | | |
| Abrasion Resistance | N/A | | | |
| Usage | Drapery, Cushion | | | |
| Care Instructions | | | | |



3149-1



3149-2



3149-3



3149-4



3149-5



3149-6



3149-7



3149-8



3149-9



3149-10



LEAFY

Raining confetti of shimmery leaves

LEAFY captures the rawness of organic motifs while engaging the senses with its intriguing texture and brilliant luster. It showcases natural leaf patterns on a semi-textured satin surface with an embossed look. A window to the outdoors, LEAFY, enhances the indoors with nature's beauty.

Keywords:

Nature, Leaf, embossed, texture, shiny, Autumn/fall

| | | | | |
|---------------------|---------------------------|-------|------------|-------|
| Article Reference | Leafy 3150 | | | |
| No. of Colors | 10 | | | |
| Width (+/-) | 140cms | | | |
| Repeat (+/-) | Vertical | 21cms | Horizontal | 22cms |
| Composition | 72% Polyester, 28% Cotton | | | |
| Weight (+/-) | 279 g/m ² | | | |
| Abrasion Resistance | N/A | | | |
| Usage | Draperies, Cushion | | | |
| Care Instructions | | | | |



3150-1



3150-2



3150-3



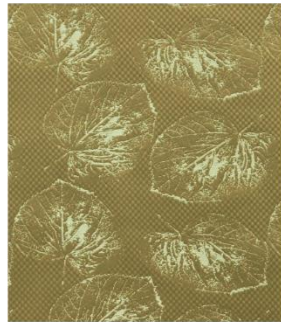
3150-4



3150-5



3150-6



3150-7



3150-8



3150-9



3150-10

Collection Name: VELOR

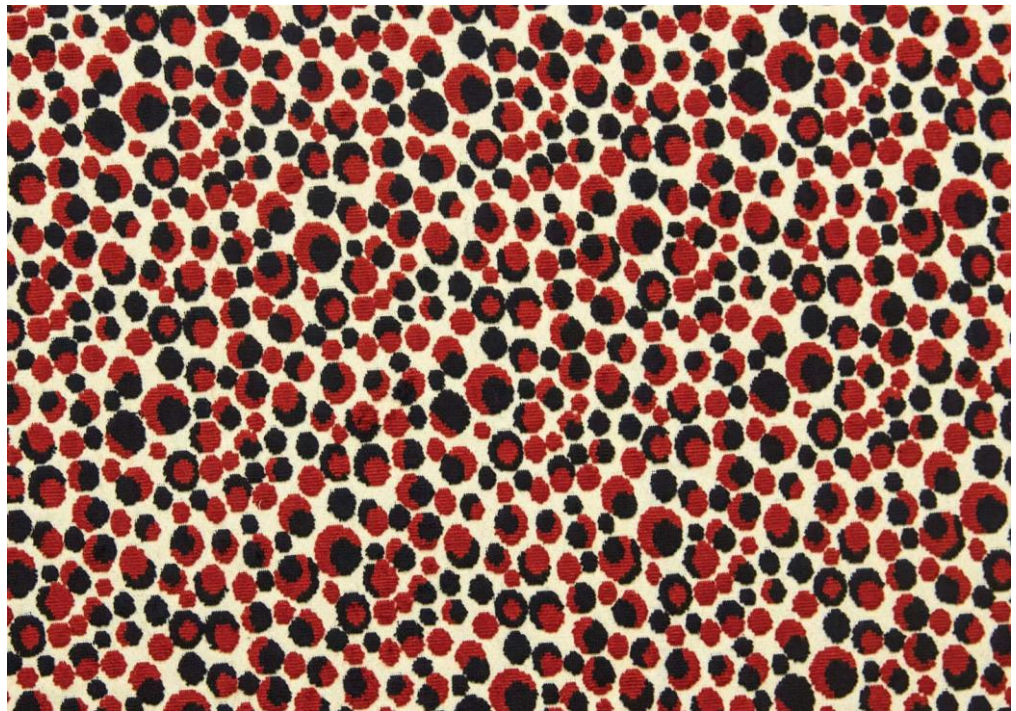
An exquisite exploration of enchanting velvets.

Step into the realm of VELOR, where velvet craftsmanship meets plush luxury. The fabric articles redefine tactile experiences, weaving a story of enchantment and refinement. From the nostalgic allure of PEBLO to the artistic intrigue of ARTY, VELOR extends an inviting hand into the world of comfort and elegance, embracing the velvety softness that awaits.

Keywords:

Velvet, plush, luxury, elegance, soft.





PEBLO

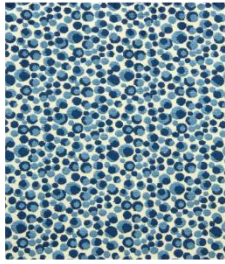
Reminiscent of walks by the beach, skipping stones and trotting in glee.

PEBLO is a poetic and evocative description of a velvet that captures the essence of carefree joy and the soothing ambiance of coastal surroundings. Its soft, velvety texture encourages one to run their fingers across its surface like skipping stones and its plushness might tempt one to roll or trot upon it with delight, a perfect addition for interiors that need a playful touch.

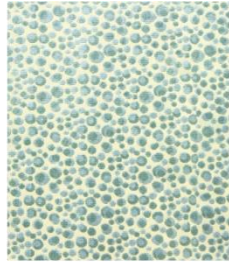
Keywords:

Pebbles on a beach, seaside, alluring, inviting, standing out, velvet

| | | | | |
|---------------------|----------------------------|-------|------------|---------|
| Article Reference | Peblo 3151 | | | |
| No. of Colors | 6 | | | |
| Width (+/-) | 140cms | | | |
| Repeat (+/-) | Vertical | 15cms | Horizontal | 17.5cms |
| Composition | 46% Polyester, 54% Viscose | | | |
| Weight (+/-) | 538 g/m ² | | | |
| Abrasion Resistance | +30000 Martindale | | | |
| Usage | Cushion, Upholstery | | | |
| Care Instructions | | | | |



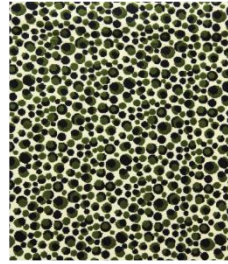
3151-1



3151-2



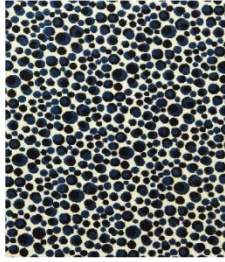
3151-3



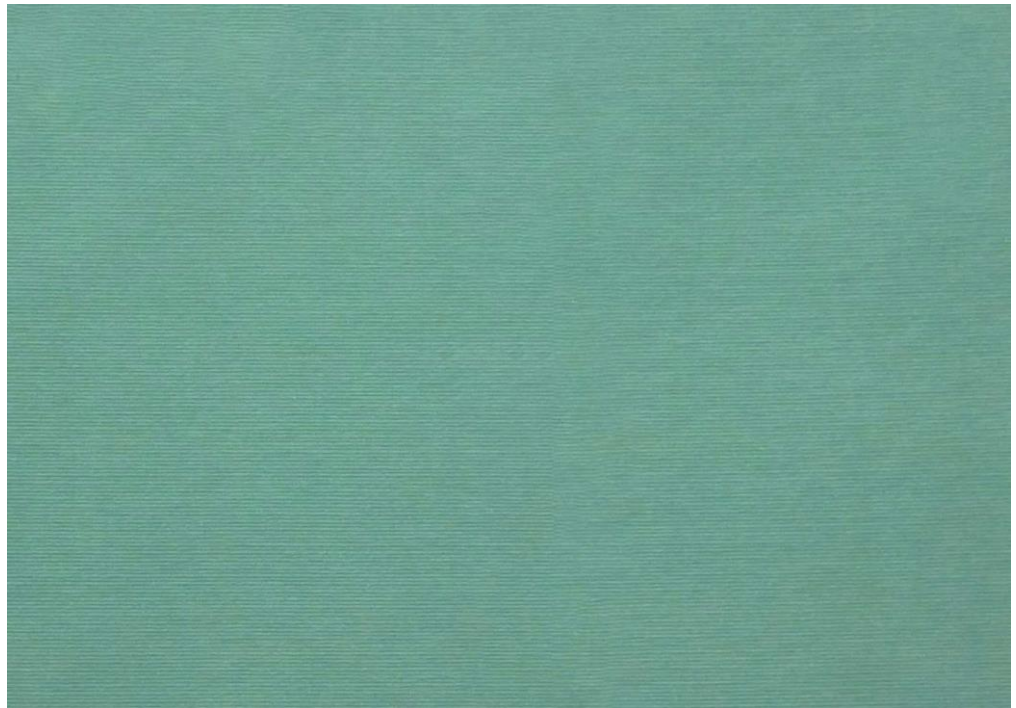
3151-4



3151-5



3151-6



UNIQUO

A bold, ribbed, solid plain that commands a presence

True to its name, UNIQUO possesses a unique appearance, characterized by vivid, attention-grabbing colors. An unconventional velvet that boldly flaunts its solid color, it showcases a subtle ribbed texture, and has an undeniable presence that enlivens the living space.

Keywords:

Ribbed, solid color, velvet, bold

| | | | | |
|---------------------|----------------------|-----|------------|-----|
| Article Reference | Uniqo 3152 | | | |
| No. of Colors | 8 | | | |
| Width (+/-) | 140cms | | | |
| Repeat (+/-) | Vertical | N/A | Horizontal | N/A |
| Composition | 100% Polyester | | | |
| Weight (+/-) | 364 g/m ² | | | |
| Abrasion Resistance | +30000 Martindale | | | |
| Usage | Cushion, Upholstery | | | |
| Care Instructions | | | | |



3152-1



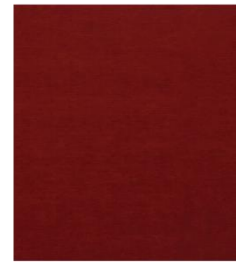
3152-2



3152-3



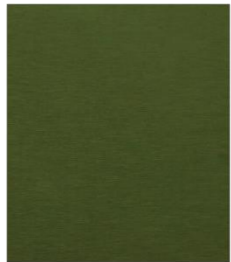
3152-4



3152-5



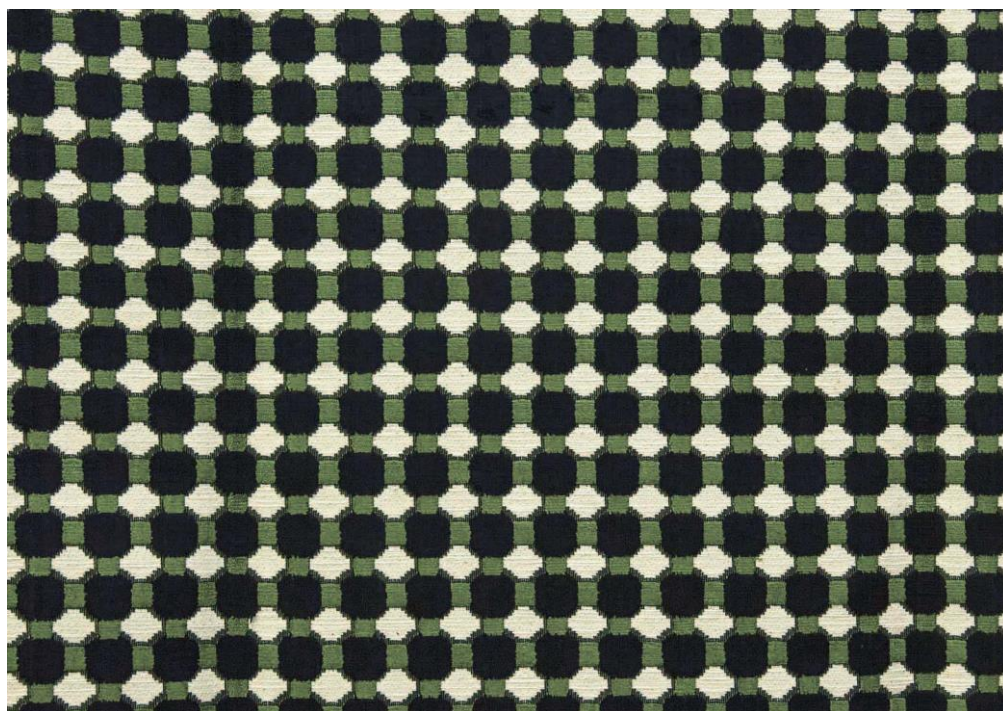
3152-6



3152-7



3152-8



TILO

A look from across the tiled fence.

Tilo boasts a timeless and elegant design, featuring octagon and square motifs in a tiled pattern. The geometric arrangement adds boldness to the fabric while its rich velvet construction adds depth and allure, making it an excellent choice for creating a lavish and refined atmosphere in any interior décor.

Keywords:

Tiles, structured, geometric, 3D, velvet

| | | | | |
|---------------------|---|--------|------------|--------|
| Article Reference | Tilo 3153 | | | |
| No. of Colors | 6 | | | |
| Width (+/-) | 140cms | | | |
| Repeat (+/-) | Vertical | 3.3cms | Horizontal | 3.5cms |
| Composition | 30% Polyesters, 53% Viscose, 17% Cotton | | | |
| Weight (+/-) | 728 g/m ² | | | |
| Abrasion Resistance | +30000 Martindale | | | |
| Usage | Cushion, Upholstery | | | |
| Care Instructions | | | | |



3153-1



3153-2



3153-3



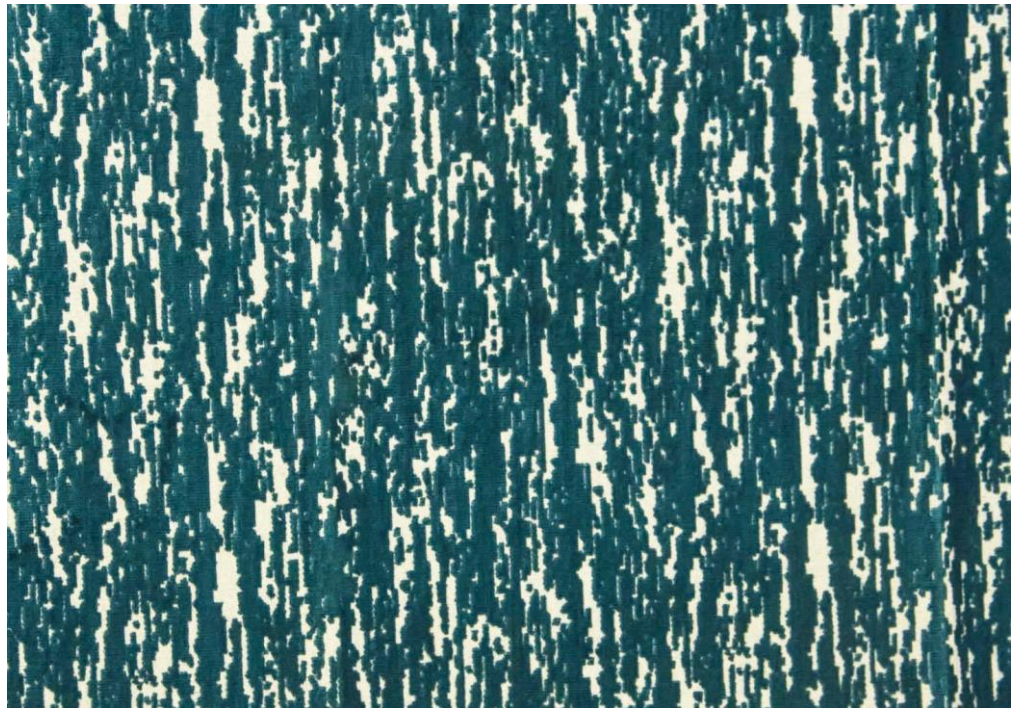
3153-4



3153-5



3153-6



ARTY

An artistic rendition of a misty day in decorative velvet.

ARTY features seamless abstract formations on velvet, creating a dreamy and poetic vibe like the play of light and shadow in misty landscapes. Inspiring imagination, ARTY is best suited for upholstery or cushions, bringing an element of curiosity to any creative project.

Keywords:

Mist, natural, rainfall, artistic, velvet

| | | | | |
|---------------------|--|-------|------------|---------|
| Article Reference | GLITZE | | | |
| No. of Colors | 6 | | | |
| Width (+/-) | 140cms | | | |
| Repeat (+/-) | Vertical | 35cms | Horizontal | 26.7cms |
| Composition | 34% Polyesters, 57% Viscose, 7% Cotton, 2% Linen | | | |
| Weight (+/-) | 664 g/m ² | | | |
| Abrasion Resistance | +30000 Martindale | | | |
| Usage | Cushion, Upholstery | | | |
| Care Instructions | | | | |



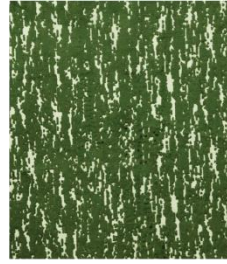
3154-1



3154-2



3154-3



3154-4



3154-5



3154-6

GLITZE 3155

VFM DESIGN



GLITZE

Free falling polygons reminiscent of shards of glass.

Harmoniously combining contrasting characteristics, GLITZE, encapsulates the sharpness of broken glass etched against the soft feel of lush velvet. The vertically flowing polygons merge fun and modernity, making it a fascinating addition to any contemporary space.

Keywords:

Random, Freefalling, glitter, polygon, velvet, glass.

| | | | | |
|---------------------|--|---------|------------|-------|
| Article Reference | Arty 3154 | | | |
| No. of Colors | 6 | | | |
| Width (+/-) | 140cms | | | |
| Repeat (+/-) | Vertical | 26.7cms | Horizontal | 35cms |
| Composition | 34% Polyesters, 57% Viscose, 7% Cotton, 2% Linen | | | |
| Weight (+/-) | 574 g/m ² | | | |
| Abrasion Resistance | +30000 Martindale | | | |
| Usage | Cushion, Upholstery | | | |
| Care Instructions | | | | |



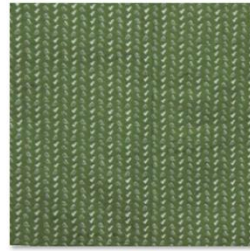
3155- (1)



3155- (2)



3155- (3)



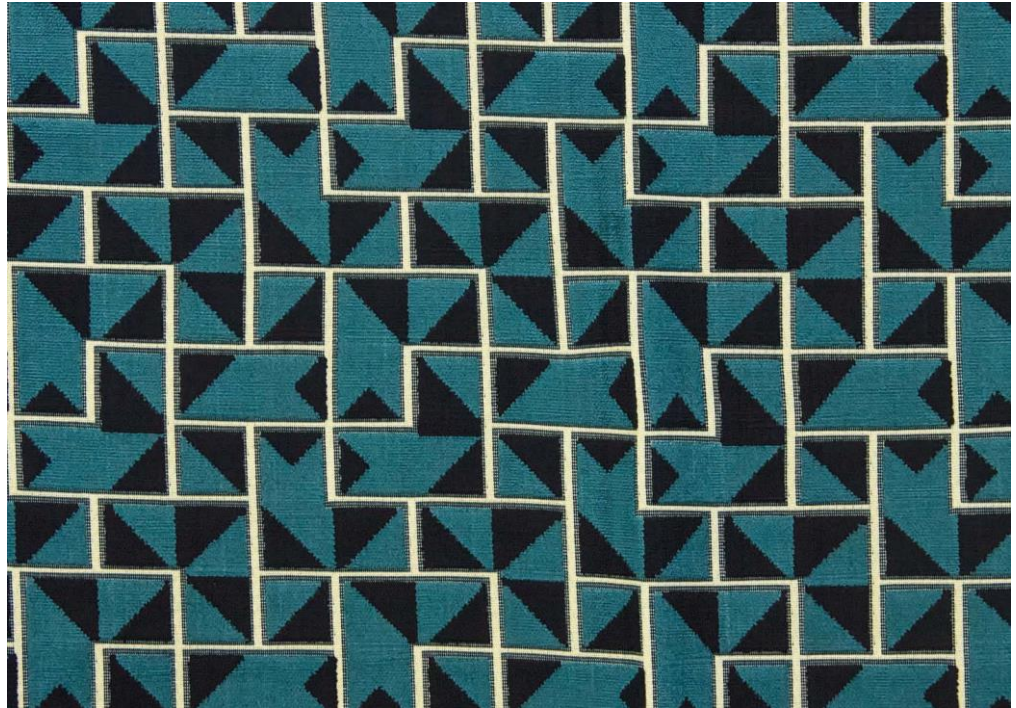
3155- (4)



3155- (5)



3155- (6)



FLINT

A captivating maze for the wandering eye.

Flint establishes itself as an enchanting geometric masterpiece on velvet, overflowing with a delightful mix of squares, triangles, rectangles, and polygons. Its captivating labyrinth in a seamless design offers a bold and modern fabric for upholsteries and decorative cushions.

Keywords:

Geometric, Seamless, Maze, Shapes, Velvet, luxury.

| | | | | |
|---------------------|----------------------------|---------|------------|---------|
| Article Reference | Flint 3156 | | | |
| No. of Colors | 6 | | | |
| Width (+/-) | 140cms | | | |
| Repeat (+/-) | Vertical | 16.7cms | Horizontal | 17.5cms |
| Composition | 42% Polyester, 58% Viscose | | | |
| Weight (+/-) | 587 g/m ² | | | |
| Abrasion Resistance | +30000 Martindale | | | |
| Usage | Upholstery, Cushion | | | |
| Care Instructions | | | | |



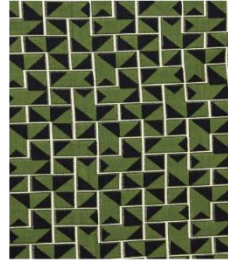
3156-1



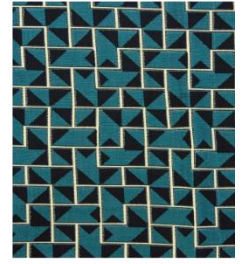
3156-2



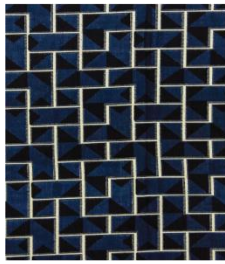
3156-3



3156-4



3156-5



3156-6

Collection Name: ELLORA

Delicate embroideries crafted on feather-light fabric.

ELLORA is a testimony to the artistry of embroidery, where each fabric enchants with its cloud-like quality and captivates with its meticulous attention to detail, showcasing exceptional craftsmanship. Elevate spaces and attires with the allure of ELLORA, where the art of embroidery shines in all its splendor.

Keywords:

Rustic, embroidery, natural, delicate look






JUTA

A Jute look and feel that stands out as an ode to natural fibers.

The rustic look of jute shines through in JUTA, lending it a down-to-earth and unpretentious appeal. Be it as drapery or as cushions, the earthy aesthetic of JUTA brings warmth and authenticity, making it a popular choice for adding a touch of nature’s beauty.

Keywords:

Jute look, rustic, solid color.

| | | | | |
|---------------------|---|-----|------------|-----|
| Article Reference | JUTA 3157 | | | |
| No. of Colors | 5 | | | |
| Width (+/-) | 140cms | | | |
| Repeat (+/-) | Vertical | N/A | Horizontal | N/A |
| Composition | 25% Polyester, 25% Viscose, 25% Cotton, 25% Linen | | | |
| Weight (+/-) | 314 g/m ² | | | |
| Abrasion Resistance | N/A | | | |
| Usage | Drapery & Cushion | | | |
| Caring instruction |  | | | |



3157-1



3157-2



3157-3



3157-4



3157-5



CRISS

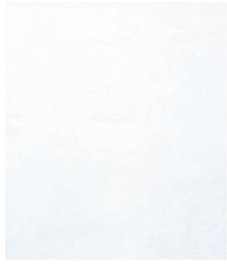
Criss cross texture that invites a closer look.

With a small-scale crisscross pattern creating a mesmerizing visual texture, **CRISS** features the delightful look of linen while maintaining the longevity and easy-care nature of man-made fibers. A versatile canvas for exploring creativity, its semi-transparent and lightweight flow makes it ideal for layering and combining with other fabrics, for a variety of projects.

Keywords:

Semi-transparent, lightweight, simple, crisscross pattern, linen look.

| | | | | |
|---------------------|---------------------------|-----|------------|-----|
| Article Reference | Criss 3158 | | | |
| No. of Colors | 5 | | | |
| Width (+/-) | 140cms | | | |
| Repeat (+/-) | Vertical | N/A | Horizontal | N/A |
| Composition | 85% Polyester, 15% Cotton | | | |
| Weight (+/-) | 143 g/m ² | | | |
| Abrasion Resistance | N/A | | | |
| Usage | Drapery, Cushion | | | |
| Caring instruction | | | | |



3158-1



3158-2



3158-3



3158-4



3158-5




DIAMO

A step into the illusion of concentric diamonds.

DIAMO features embroidered geometric elements that renders the traditional diamond lattice in an illusion-like pattern with artistry and depth that only needlework can offer. DIAMO offers a delightful blend of nostalgia and artistic expression, perfect for creating eye-catching cushions or curtains that bring in the vintage charm.

Keywords:

Illusion, diamond, traditional, embroidery, rustic, stitched texture.

| | | | | |
|---------------------|---|-------|------------|---------|
| Article Reference | Diamo 3159 | | | |
| No. of Colors | 7 | | | |
| Width (+/-) | 140cms | | | |
| Repeat (+/-) | Vertical | 12cms | Horizontal | 14.3cms |
| Composition | 100% Polyester with Embroidery | | | |
| Weight (+/-) | 305 g/m ² | | | |
| Abrasion Resistance | N/A | | | |
| Usage | Drapery, Cushion | | | |
| Caring instruction |  | | | |



3159-1



3159-2



3159-3



3159-4



3159-5



3159-6



3159-7



MANDALA

An artistic masterpiece infused with culture.

The embroidery fabric showcases a festive mandala design, brimming with the artistry of intricate needlework. A decorative fabric perfect for celebratory occasions, MANDALA infuses spaces with joy and liveliness while cultural elements imbue it with meaning and symbolism, enriching its allure.

Keywords:

Embroidery, festive, cultural, intricate.

| | | | | |
|---------------------|--------------------------------|-------|------------|-------|
| Article Reference | Mandala 3160 | | | |
| No. of Colors | 7 | | | |
| Width (+/-) | 140cms | | | |
| Repeat (+/-) | Vertical | 24cms | Horizontal | 34cms |
| Composition | 100% Polyester with Embroidery | | | |
| Weight (+/-) | 265g/m ² | | | |
| Abrasion Resistance | N/A | | | |
| Usage | Drapery, Cushion | | | |
| Caring instruction | | | | |



3160-1



3160-2



3160-3



3160-4



3160-5



3160-6



3160-7



LEAFLET

The enchanting journey of climbing leaves.

The meticulously embroidered leaf-like climber patterns embody the fabric's theme, mimicking organic growth and guiding a captivating visual journey. The light, airy fabric construction makes it ideal for infusing interior projects with grace and serenity.

Keywords:

Natural, leaves, organic, embroidery.

| | | | | |
|---------------------|--------------------------------|-------|------------|---------|
| Article Reference | Leaflet 3161 | | | |
| No. of Colors | 7 | | | |
| Width (+/-) | 140cms | | | |
| Repeat (+/-) | Vertical | 24cms | Horizontal | 16.2cms |
| Composition | 100% Polyester with Embroidery | | | |
| Weight (+/-) | 298 g/m ² | | | |
| Abrasion Resistance | N/A | | | |
| Usage | Drapery, Cushion | | | |
| Caring instruction | | | | |



3161-1



3161-2



3161-3



3161-4



3161-5



3161-6



3161-7



MOTIFO

A rustic twist to a classic design.

A soft, graceful fabric, MOTIFO features a classic damask motif, crafted with the intricate art of embroidery. A harmonious blend of different embroidery styles, MOTIFO becomes an excellent choice for various interior décor applications, such as luxurious curtains or decorative throw pillows.

Keywords:

Classic, soft look, rustic, embroidery.

| | | | | |
|---------------------|--------------------------------|-------|------------|-------|
| Article Reference | Motifo 3162 | | | |
| No. of Colors | 7 | | | |
| Width (+/-) | 140cms | | | |
| Repeat (+/-) | Vertical | 24cms | Horizontal | 26cms |
| Composition | 100% Polyester with Embroidery | | | |
| Weight (+/-) | 267 g/m ² | | | |
| Abrasion Resistance | N/A | | | |
| Usage | Drapery, Cushion | | | |
| Caring instruction | | | | |



3162-1



3162-2



3162-3



3162-4



3162-5



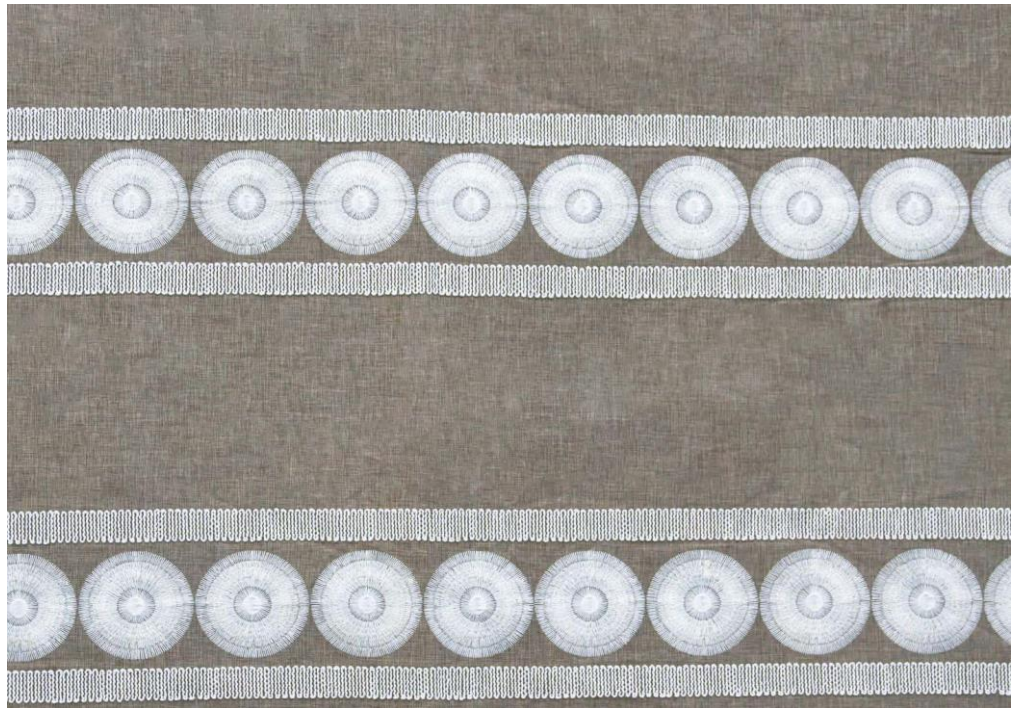
3162-6



3162-7

DENDRO 3163

VFM DESIGN



DENDRO 3163

Embroidered solar patterns channeling the brightness of the sun.

With its embroidered solar patterns enhanced by the shiny lurex yarn, DENDRO becomes a mesmerizing representation of the sun's cosmic dance. The bold stripe look broken with a row of captivating circles, adds a celestial charm and elegance to any creative project.

Keywords:

Circles, Bold stripe, Shiny, Lurex, solar, geometric, embroidery

| | | | | |
|---------------------|--------------------------------|-------|------------|--------|
| Article Reference | Dendro 3163 | | | |
| No. of Colors | 7 | | | |
| Width (+/-) | 140cms | | | |
| Repeat (+/-) | Vertical | 24cms | Horizontal | 7.5cms |
| Composition | 100% Polyester with Embroidery | | | |
| Weight (+/-) | 376 g/m ² | | | |
| Abrasion Resistance | N/A | | | |
| Usage | Drapery, Cushion | | | |
| Caring instruction | | | | |



3163-1



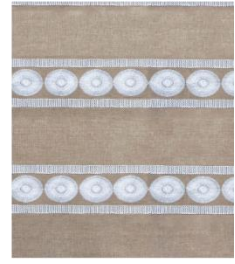
3163-2



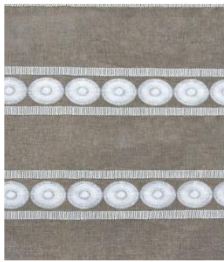
3163-3



3163-4



3163-5



3163-6



3163-7

Collection Name: BOTANICUM

Picturesque views captured in watercolors.

The BOTANICUM collection showcases peaceful landscapes, intricate florals and lively birds in vivid colors, capturing the essence of watercolor paintings through skillful printing techniques. The enchanting beauty of the botanical world comes to life in every brushstroke, bringing the freshness of outdoor atmosphere to the living area.

Keywords:

Watercolor look, printed, nature, floral.





PHYLA

Large leaves dancing to the tunes of nature.

PHYLA pays homage to life's cycle, marking transitions with falling leaves. Free-floating large leaf motifs printed on a soft base, seem to be dancing to the rhythm of nature – a rejoicing symphony of movement and vitality. It adds a touch of autumnal splendor to any space, infusing it with warm and cozy ambiance.

Keywords:

Natural, autumn, leaf, watercolor look, printed.

| | | | | |
|---------------------|----------------------|----------|------------|----------|
| Article Reference | Phyla 3164 | | | |
| No. of Colors | 6 | | | |
| Width (+/-) | 140cms | | | |
| Repeat (+/-) | Vertical | 68.38cms | Horizontal | 34.29cms |
| Composition | 100% Polyester | | | |
| Weight (+/-) | 206 g/m ² | | | |
| Abrasion Resistance | N/A | | | |
| Usage | Drapery, Cushion | | | |
| Caring instruction | | | | |



3164-1



3164-2



3164-3



3164-4



3164-5



3164-6



SCAPE

Relaxing vista of an expansive, imaginative landscape.

SCAPE transports to a world of tranquility, where the mind can wander freely amidst a breathtaking panorama of nature. Expressed in a printed watercolor look on sturdy cotton, SCAPE becomes a captivating choice for any application creating a serene and thought-provoking atmosphere.

Keywords:

Landscape, serene, watercolor look, printed

| | | | | |
|---------------------|------------------------------|----------|------------|----------|
| Article Reference | Scape 3165 | | | |
| No. of Colors | 4 | | | |
| Width (+/-) | 140cms | | | |
| Repeat (+/-) | Vertical | 45.72cms | Horizontal | 45.72cms |
| Composition | 100% Cotton | | | |
| Weight (+/-) | 341 g/m ² | | | |
| Abrasion Resistance | N/A | | | |
| Usage | Drapery, Cushion, Upholstery | | | |
| Caring instruction | | | | |



3165-1



3165-2



3165-3



3165-4



PLUMA

An ethereal blossom haven.

PLUMA embodies the essence of spring's promise. Its light and airy motifs, crafted with the wet-on-wet watercolor appearance, make it a wonderful choice for drapery, upholstery, or any fabric article meant to infuse spaces with a touch of natural beauty and relaxation.

Keywords:

Natural, spring, airy, printed, floral, watercolor

| | | | | |
|---------------------|------------------------------|----------|------------|----------|
| Article Reference | Pluma 3166 | | | |
| No. of Colors | 4 | | | |
| Width (+/-) | 140cms | | | |
| Repeat (+/-) | Vertical | 60.96cms | Horizontal | 45.72cms |
| Composition | 100% Cotton | | | |
| Weight (+/-) | 341 g/m ² | | | |
| Abrasion Resistance | N/A | | | |
| Usage | Drapery, Cushion, Upholstery | | | |
| Caring instruction | | | | |



3166-1



3166-2



3166-3



3166-4

FLORETTA 3167

VFM DESIGN



FLORETTA

A charming arrangement of life-like florals.

FLORETTA captures the viewer's eye with a lively and naturalistic array of floral configurations printed on a canvas base. The intertwining patterns create a tapestry of elegance, making it a perfect choice for enchanting interior décor projects.

Keywords:

Natural, floral, lively, colorful, printed

| | | | | |
|---------------------|------------------------------|----------|------------|---------|
| Article Reference | Floretta 3167 | | | |
| No. of Colors | 4 | | | |
| Width (+/-) | 140cms | | | |
| Repeat (+/-) | Vertical | 126.3cms | Horizontal | 68.5cms |
| Composition | 100% Cotton | | | |
| Weight (+/-) | 341 g/m ² | | | |
| Abrasion Resistance | N/A | | | |
| Usage | Drapery, Cushion, Upholstery | | | |
| Caring instruction | | | | |



3167-1



3167-2



3167-3



3167-4



BIRDIE

Rejoice in the morning glory of birds perched on tree branches

BIRDIE beautifully renders the liveliness of nature’s morning song, with birds roosting on swaying limbs. The fabric becomes a window to the natural world, offering a delightful glimpse into the harmonious coexistence of flora and fauna.

Keywords:

Birds, Flora, morning vibes, vibrant, printed

| | | | | |
|---------------------|------------------------------|-------|------------|----------|
| Article Reference | Birdie 3168 | | | |
| No. of Colors | 4 | | | |
| Width (+/-) | 140cms | | | |
| Repeat (+/-) | Vertical | 33.48 | Horizontal | 68.58cms |
| Composition | 100% Cotton | | | |
| Weight (+/-) | 341 g/m ² | | | |
| Abrasion Resistance | N/A | | | |
| Usage | Drapery, Cushion, Upholstery | | | |
| Caring instruction | | | | |



3168-1



3168-2



3168-3



3168-4



GARDINA

Indulge in the diversity of flourishing gardens

A panorama of floral extravagance, GARDINA is a delightful fusion of various floral elements creating a bouquet of botanical beauty. Be it as drapery or upholstery, GARDINA’s magnetic allure beckons a closer look to immerse oneself in its intricacies.

Keywords:

Natural, colorful, busy, fusion, floral, printed

| | | | | |
|---------------------|------------------------------|-------|------------|----------|
| Article Reference | Gardina 3169 | | | |
| No. of Colors | 4 | | | |
| Width (+/-) | 140cms | | | |
| Repeat (+/-) | Vertical | 45.72 | Horizontal | 45.72cms |
| Composition | 100% Cotton | | | |
| Weight (+/-) | 341 g/m ² | | | |
| Abrasion Resistance | N/A | | | |
| Usage | Drapery, Cushion, Upholstery | | | |
| Caring instruction | | | | |



3169-1



3169-2



3169-3



3169-4

BLOOMIN 3170

VFM DESIGN



BLOOMIN

A dreamy delight of the full bloom

BLOOMIN embodies the joy of the spring harvest with its effervescent blossoms. Each painted floral printed on pure cotton canvas, fills any atmosphere with positivity, enveloping the surroundings with the vibrant energy of a flourishing springtime.

Keywords:

Natural, floral, spring, printed.

| | | | | |
|---------------------|------------------------------|-------|------------|----------|
| Article Reference | Bloomin 3170 | | | |
| No. of Colors | 4 | | | |
| Width (+/-) | 140cms | | | |
| Repeat (+/-) | Vertical | 50.19 | Horizontal | 91.44cms |
| Composition | 100% Cotton | | | |
| Weight (+/-) | 341 g/m ² | | | |
| Abrasion Resistance | N/A | | | |
| Usage | Drapery, Cushion, Upholstery | | | |
| Caring instruction | ☒ ☒ ☒ ☒ ☒ | | | |



3170-1



3170-2



3170-3



3170-4

VFM
DESIGN

www.vfm-design.com

For Enquiries:

Europe:

office@baumann.co.at

Middle East:

office@warpsandwefts.com

USA:

office@baumanndekorusa.com

India:

office@consilioresources.com