

V F M  
DESIGN



# *Open Sesame* by VFM DESIGN

<b>NATURELLE</b>	Page 2
<b>SATINE</b>	Page 5
<b>MEXICANA</b>	Page 8
<b>COSMOS</b>	Page 21
<b>PATTERNE</b>	Page 32
<b>ELEMENTS</b>	Page 39
<b>OPERA</b>	Page 56
<b>ESCAPADE</b>	Page 65

## *Open Sesame*

Open the doors to this latest and exciting launch from 'VFM Design'!

'Open Sesame' presents eight distinct collections of coordinated designs as well as solid colors, all standing out with a rich and diverse variety of furnishing fabrics to cast a magical spell on any designed interior!

## Collection Name: NATURELLE

A nature inspired textured semi-plain pattern

With a subtle cross-hatched pattern, and slightly textured feel, Naturelle exudes a rustic yet classic aura, evoking simplicity and style. Its durability, comfort and a varied palette of 21 colors; make it a perfect fit for all interiors

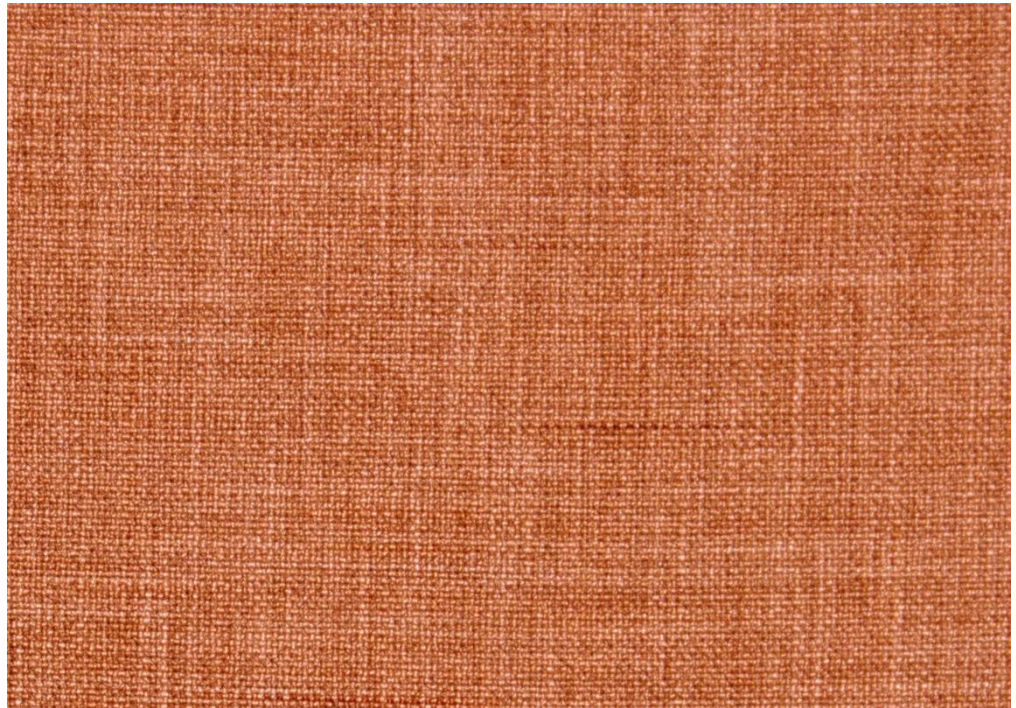
### Keywords:

Textured, two-tone, rustic, hatch



## NATURELLE 3101

VFM DESIGN



### NATURELLE

A rustic look reminiscent of a light drizzle

Subtle, simple, and rugged texture transforms this strong upholstery into a rustic and classic choice of fabric with a two-tone effect, available in many colors.

#### Keywords:

Classic, rustic, two-tone, hatch

Article Reference	Naturelle 3101			
No. of Colors	21			
Width (+/-)	140cms			
Repeat (+/-)	Vertical	N/A	Horizontal	N/A
Composition	100% Polyester			
Weight (+/-)	533 gm <sup>2</sup>			
Abrasion Resistance	+30000 Martindale			
Usage	Drapery, Cushion, Upholstery			
Care Instructions	☒ ☒ ☒ ☒ Ⓟ			



NATURELLE  
3101-1



NATURELLE  
3101-2



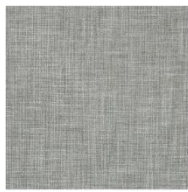
NATURELLE  
3101-3



NATURELLE  
3101-4



NATURELLE  
3101-5



NATURELLE  
3101-6



NATURELLE  
3101-7



NATURELLE  
3101-8



NATURELLE  
3101-9



NATURELLE  
3101-10



NATURELLE  
3101-11



NATURELLE  
3101-12



NATURELLE  
3101-13



NATURELLE  
3101-14



NATURELLE  
3101-15



NATURELLE  
3101-16



NATURELLE  
3101-17



NATURELLE  
3101-18



NATURELLE  
3101-19



NATURELLE  
3101-20



NATURELLE  
3101-21

## Collection Name: SATINE

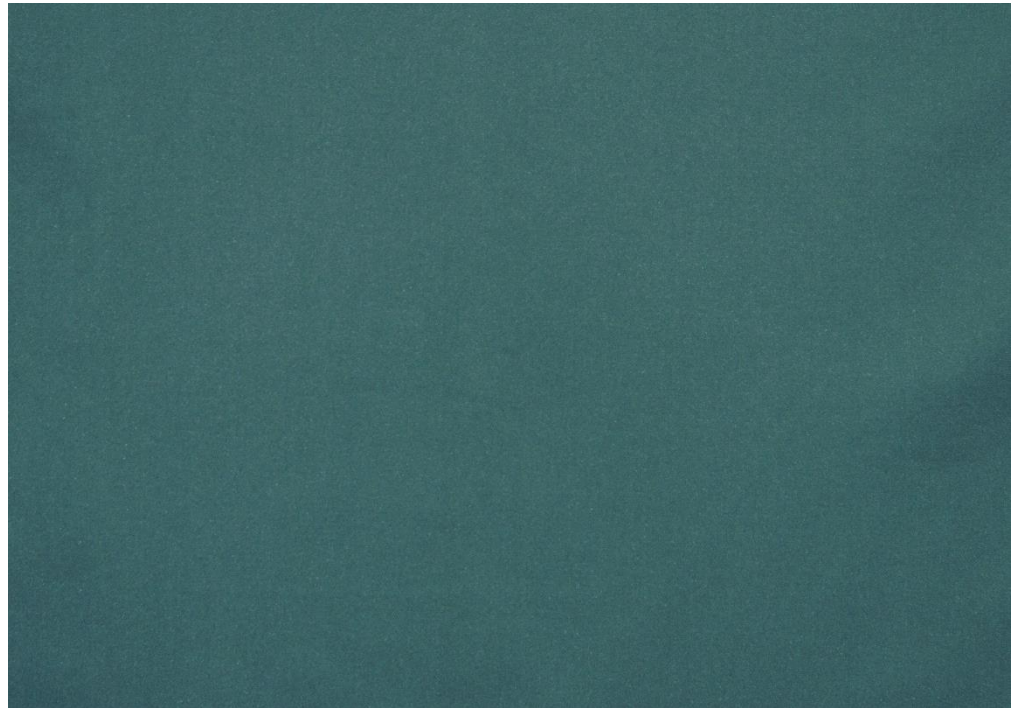
A luxurious collection of wide width silky satins

The smooth silky haptic of satin weave, complimenting a vibrant optic of twenty two sophisticated and rich hues evokes an expression of pure lavishness, bringing luxury and chic opulence to this wide width fabric suitable for any drapery or decorative setting.

### Keywords:

Smooth, satin, lavish, wide width





**SATINE**

A ‘soft and silky’ pleasant dream

A smooth, satin weave with a sleek and lavish look embodies luxury itself, bringing style and dream-like opulence to any setting where this wide width fabric is draped.

**Keywords:**

Smooth, silk, luxury, dreamy

Article Reference	Satine 3102			
No. of Colors	22			
Width (+/-)	300cms			
Repeat (+/-)	Vertical	N/A	Horizontal	N/A
Composition	100% Polyester			
Weight (+/-)	218 gm <sup>2</sup>			
Abrasion Resistance	N/A			
Usage	Drapery, Cushion			
Care Instructions				



SATINE  
3102-1



SATINE  
3102-2



SATINE  
3102-3



SATINE  
3102-4



SATINE  
3102-5



SATINE  
3102-6



SATINE  
3102-7



SATINE  
3102-8



SATINE  
3102-9



SATINE  
3102-10



SATINE  
3102-11



SATINE  
3102-12



SATINE  
3102-13



SATINE  
3102-14



SATINE  
3102-15



SATINE  
3102-16



SATINE  
3102-17



SATINE  
3102-18



SATINE  
3102-19



SATINE  
3102-20



SATINE  
3102-21



SATINE  
3102-22

## Collection Name: MEXICANA

An ethnic collection of Navajo culture inspired prints

Traditional and ethnic patterns printed to emulate a handmade look, resonate with authenticity and fine craftsmanship. Six coordinated color stories, each with six printed designs, from highly detailed geometry to simple stripes provide a versatile selection to suit any interior. Though appearing organic, the fabrics have a polyester composition that ensures easy care, durability and longevity.

### Keywords:

Ethnic, handmade, Navajo, geometric





**CHALCO**

A leisurely walk on the Chalco streets

A simple, linear texture printed on a sturdy base creates an effortless and natural feel, imparting a traditional touch to any interior that it adds its grace to.

**Keywords:**

Simple, linear, print, multi-use

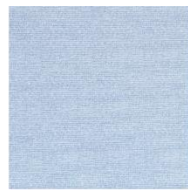
Article Reference	Chalco 3103			
No. of Colors	28			
Width (+/-)	140cms			
Repeat (+/-)	Vertical	N/A	Horizontal	N/A
Composition	100% Polyester			
Weight (+/-)	383 gm <sup>2</sup>			
Abrasion Resistance	+30000			
Usage	Drapery, Cushion, Upholstery			
Care Instructions				



CHALCO  
3103-1



CHALCO  
3103-2



CHALCO  
3103-3



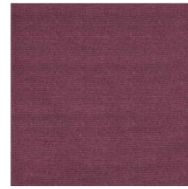
CHALCO  
3103-4



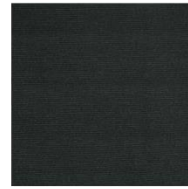
CHALCO  
3103-5



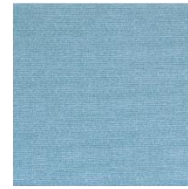
CHALCO  
3103-6



CHALCO  
3103-7



CHALCO  
3103-8



CHALCO  
3103-9



CHALCO  
3103-10



CHALCO  
3103-11



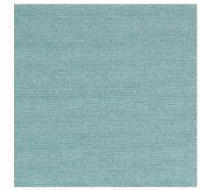
CHALCO  
3103-12



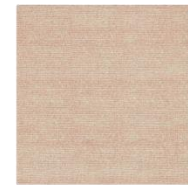
CHALCO  
3103-13



CHALCO  
3103-14



CHALCO  
3103-15



CHALCO  
3103-16



CHALCO  
3103-17



CHALCO  
3103-18



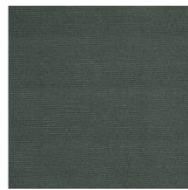
CHALCO  
3103-19



CHALCO  
3103-20



CHALCO  
3103-21



CHALCO  
3103-22



CHALCO  
3103-23



CHALCO  
3103-24



CHALCO  
3103-25



CHALCO  
3103-26



CHALCO  
3103-27



CHALCO  
3103-28



**PUEBLA**

A geometric embodiment of rich culture

Ostensibly handmade, with multi-colored diamond inspired patterns, this print truly encapsulates tradition and presents an ethnic representation of a simple geometric pattern.

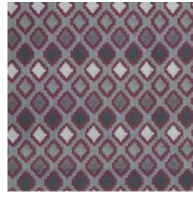
**Keywords:**

Traditional, ethnic, diamond, multi-use

Article Reference	Puebla 3104			
No. of Colors	6			
Width (+/-)	140cms			
Repeat (+/-)	Vertical	10.19cms	Horizontal	4.2cms
Composition	100% Polyester			
Weight (+/-)	383 gm <sup>2</sup>			
Abrasion Resistance	+30000 Martindale			
Usage	Drapery, Cushion, Upholstery			
Care Instructions				



PUEBLA  
3104-1



PUEBLA  
3104-2



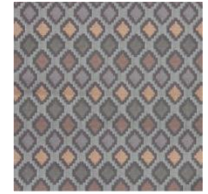
PUEBLA  
3104-3



PUEBLA  
3104-4



PUEBLA  
3104-5



PUEBLA  
3104-6

## TONALA 3105

VFM DESIGN



### TONALA

An epitome of unique traditional culture

A highly detailed traditional pattern exudes the alluring lively energy of Tonala, elegantly presenting a native and ethnic design with a large repeat, printed on a strong base material.

#### Keywords:

Ethnic, detailed, lively, multi-use

Article Reference	Tonala 3105			
No. of Colors	6			
Width (+/-)	140cms			
Repeat (+/-)	Vertical	45.2cms	Horizontal	29.06cms
Composition	100% Polyester			
Weight (+/-)	383 gm <sup>2</sup>			
Abrasion Resistance	+30000 Martindale			
Usage	Drapery, Cushion, Upholstery			
Care Instructions	☒ ☒ ☒ ☒ ☒			



TONALA  
3105-1



TONALA  
3105-2



TONALA  
3105-3



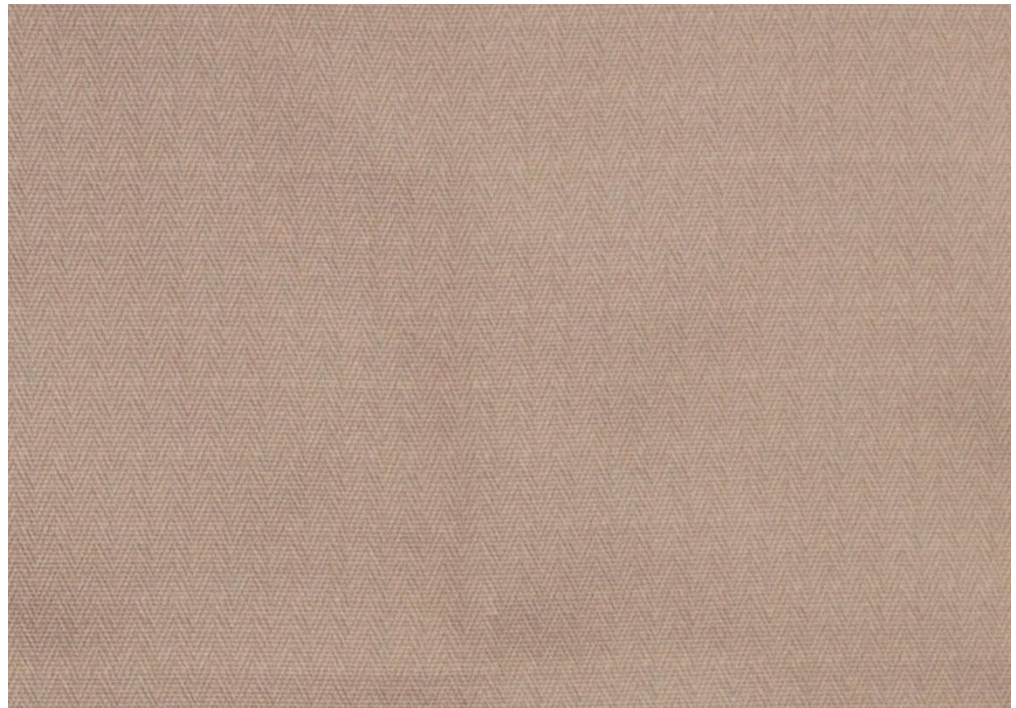
TONALA  
3105-4



TONALA  
3105-5



TONALA  
3105-6



**LEON**

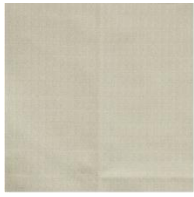
A chevron that exudes a simple charm

The subtle striped zig-zag pattern as a mildly textured print evokes an outrightly gorgeous feel that represents a sense of classic beauty.

**Keywords:**

Simple, zig zag, classic, multi-use

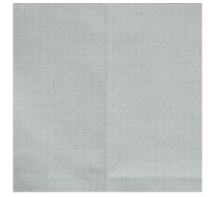
Article Reference	Leon 3106			
No. of Colors	6			
Width (+/-)	140cms			
Repeat (+/-)	Vertical	N/A	Horizontal	N/A
Composition	100% Polyester			
Weight (+/-)	383 gm <sup>2</sup>			
Abrasion Resistance	+30000 Martindale			
Usage	Drapery, Cushion, Upholstery			
Care Instructions				



LEON  
3106-1



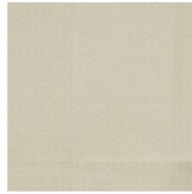
LEON  
3106-2



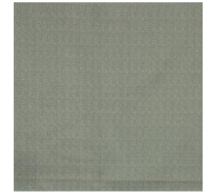
LEON  
3106-3



LEON  
3106-4



LEON  
3106-5



LEON  
3106-6



**TOLUCA**

A delightful array of varied stripes

This striped pattern, accentuated by varying widths and contrasting hues, derives its design from the expressive chevron pattern of Leon; embodying tropical ethnicity and bringing a sense of stylish comfort to any setting.

**Keywords:**

Striped, linear, variety, multi-use

Article Reference	Toluca 3107			
No. of Colors	6			
Width (+/-)	140cms			
Repeat (+/-)	Vertical	N/A	Horizontal	17.5cms
Composition	100% Polyester			
Weight (+/-)	383 gm <sup>2</sup>			
Abrasion Resistance	+30000 Martindale			
Usage	Drapery, Cushion, Upholstery			
Care Instructions				



TOLUCA  
3107-1



TOLUCA  
3107-2



TOLUCA  
3107-3



TOLUCA  
3107-4



TOLUCA  
3107-5



TOLUCA  
3107-6

## MERIDA 3108

VFM DESIGN



### MERIDA

An elegant Navajo culture inspired pattern

A highly detailed geometric pattern, with serrated diamond shapes printed on a mildly textured sturdy base in a rich combination of traditional complimentary hues exudes an aura of genuine ethnicity.

#### Keywords:

Authentic, Navajo, detailed, multi-use

Article Reference	Merida 3108			
No. of Colors	6			
Width (+/-)	140cms			
Repeat (+/-)	Vertical	26.45cms	Horizontal	34.2cms
Composition	100% Polyester			
Weight (+/-)	383 gm <sup>2</sup>			
Abrasion Resistance	+30000 Martindale			
Usage	Drapery, Cushion, Upholstery			
Care Instructions	☒ ☒ ☒ ☒ Ⓟ			



MERIDA  
3108-1



MERIDA  
3108-2



MERIDA  
3108-3



MERIDA  
3108-4



MERIDA  
3108-5



MERIDA  
3108-6

## Collection Name: COSMOS

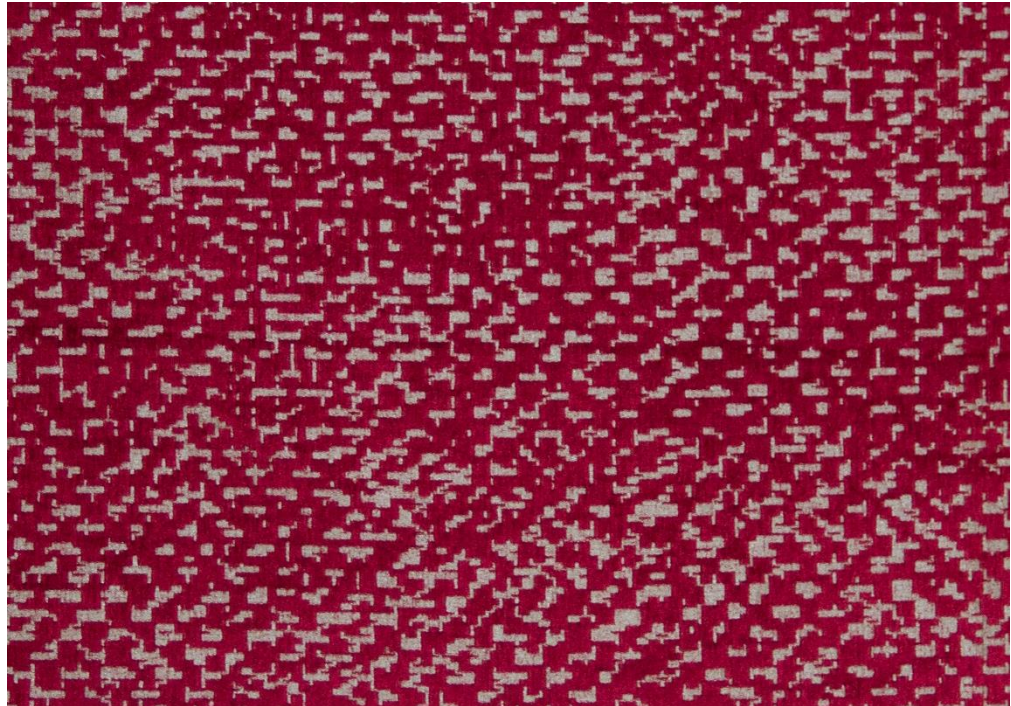
Cosmic energy infused collection of chenille upholsteries

A collection of four simply organized pattern designs and one solid uni-color quality, in eight vibrant colorways, all with an eclectic blend of natural and synthetic yarns create a cosmic aura. A refined selection of sharp and edgy to soft and smooth patterns project out of a matt shiny ground exuding subtle luxury and lavish extravagance to these chenille upholsteries with a velvety feel.

### Keywords:

Chenille, soft, elegant, carved





**CHARGE**

An electrifying and charged design

A seemingly abstract pattern that appears as if carved and highlighted by a variety of yarn compositions, conducts a sense of charge, creating an electrifying atmosphere with this sleek design.

**Keywords:**

Sharp, jolt, charged, bold

Article Reference	Charge 3109			
No. of Colors	8			
Width (+/-)	140cms			
Repeat (+/-)	Vertical	59cms	Horizontal	33.4cms
Composition	27% Polyester,20% Cotton, 53% Viscose			
Weight (+/-)	593 gm <sup>2</sup>			
Abrasion Resistance	+30000 Martindale			
Usage	Cushion, Upholstery			
Care Instructions				



CHARGE  
3109-1



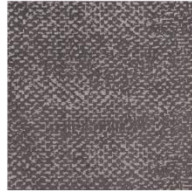
CHARGE  
3109-2



CHARGE  
3109-3



CHARGE  
3109-4



CHARGE  
3109-5



CHARGE  
3109-6



CHARGE  
3109-7



CHARGE  
3109-8



**FLUX**

A stylized string of flowing sparks

A flowing and curvy, yet geometric pattern that evokes a sense of radiance, totality, and pure energy with its harmonious appearance and seemingly engraved vibrant design.

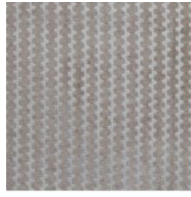
**Keywords:**

Radiant, geometric, current, flow

Article Reference	Flux 3110			
No. of Colors	8			
Width (+/-)	140 cms			
Repeat (+/-)	Vertical	1.5cms	Horizontal	4.2cms
Composition	27% Polyester,20% Cotton, 53% Viscose			
Weight (+/-)	593 gm <sup>2</sup>			
Abrasion Resistance	+30000 Martindale			
Usage	Cushion, Upholstery			
Care Instructions				



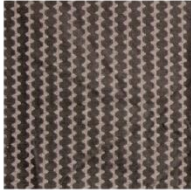
FLUX  
3110-1



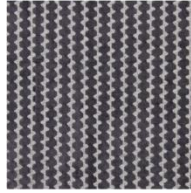
FLUX  
3110-2



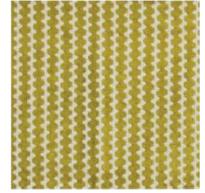
FLUX  
3110-3



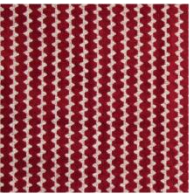
FLUX  
3110-4



FLUX  
3110-5



FLUX  
3110-6



FLUX  
3110-7



FLUX  
3110-8



**ETERNITY**

Luxuriously universal in every way that can be

Stylized luster, lavish hues, and a smooth metallic look convey the essence of eternity through this subtle unicolor solid that radiates with metamerism, typical of its chenille surface.

**Keywords:**

Smooth, lustrous, constant, universal

Article Reference	Eternity 3111			
No. of Colors	8			
Width (+/-)	140 cms			
Repeat (+/-)	Vertical	N/A	Horizontal	N/A
Composition	27% Polyester, 20% Cotton, 53% Viscose			
Weight (+/-)	564 gm <sup>2</sup>			
Abrasion Resistance	+30000 Martindale			
Usage	Cushion, Upholstery			
Care Instructions				



ETERNITY  
3111-1



ETERNITY  
3111-2



ETERNITY  
3111-3



ETERNITY  
3111-4



ETERNITY  
3111-5



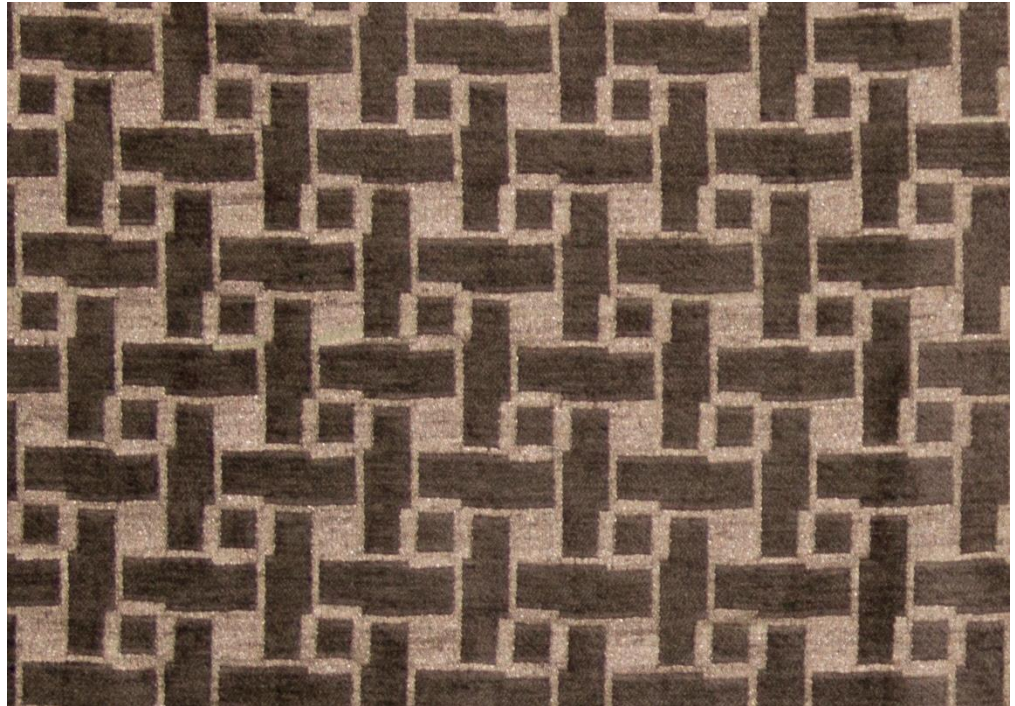
ETERNITY  
3111-6



ETERNITY  
3111-7



ETERNITY  
3111-8



**FRETTA**

A checker-like pattern of blocks

An organized and consistent interplay of structured blocks and squared dots, reminiscent of a checkerboard, woven with a fine blend of yarns, creating a subtle yet beautiful aura in this upholstery.

**Keywords:**

Consistent, Checker, geometric, blocks

Article Reference	Fretta 3112			
No. of Colors	8			
Width (+/-)	140 cms			
Repeat (+/-)	Vertical	5.8cms	Horizontal	6cms
Composition	27% Polyester,20% Cotton, 53% Viscose			
Weight (+/-)	593 gm <sup>2</sup>			
Abrasion Resistance	+30000 Martindale			
Usage	Cushion, Upholstery			
Care Instructions				



FRETTA  
3112-1



FRETTA  
3112-2



FRETTA  
3112-3



FRETTA  
3112-4



FRETTA  
3112-5



FRETTA  
3112-6



FRETTA  
3112-7



FRETTA  
3112-8



**PRISM**

A continuous and flowing prism like design

This vivid geometric pattern appears etched and seamlessly creates a sense of glory with a smooth gorgeous flowing design, resonating with style and inviting a second look to follow the design.

**Keywords:**

Blend, abstract, flow, geometric

Article Reference	Prism 3113			
No. of Colors	8			
Width (+/-)	140 cms			
Repeat (+/-)	Vertical	18.4cms	Horizontal	8.8cms
Composition	27% Polyester,20% Cotton, 53% Viscose			
Weight (+/-)	593 gm <sup>2</sup>			
Abrasion Resistance	+30000 Martindale			
Usage	Cushion, Upholstery			
Care Instructions				



PRISM  
3113-1



PRISM  
3113-2



PRISM  
3113-3



PRISM  
3113-4



PRISM  
3113-5



PRISM  
3113-6



PRISM  
3113-7



PRISM  
3113-8

## Collection Name: PATTERNNE

Simple and straightforward collection of universal patterns

The concept of simple and chic is embodied in the Patterne Collection with a slightly textured surface, though the fabrics are soft to touch and have a graceful fall. Three sleek and classic geometric pattern designs and a coordinated solid uni-color quality, in seven soft colorways, evoke an atmosphere of style and comfort, bringing organic and natural beauty to the designed interior.

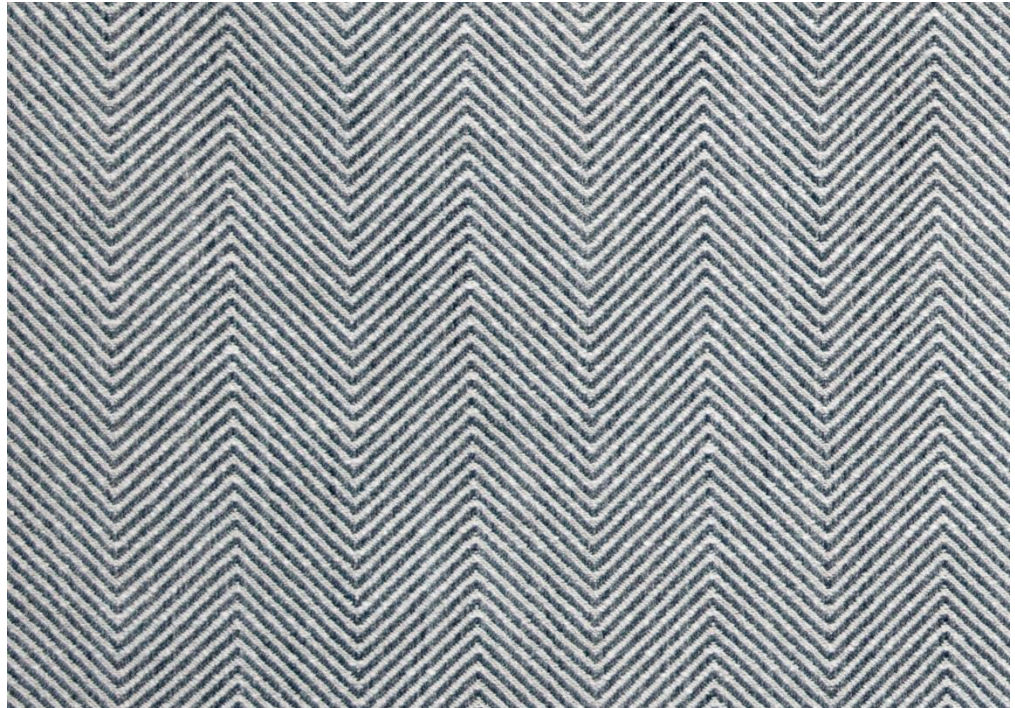
### Keywords:

Textured, simple, geometric, graceful



## CHEVRON 3114

VFM DESIGN



### CHEVRON

Classically sleek, stylish and chic

A subtle and mildly hazy chevron pattern, textured with a twill like construction, breathes a classic and natural feel that can easily fit in a variety of mood boards with its stripy defined pattern.

#### Keywords:

Hazy, natural, diagonal, chevron

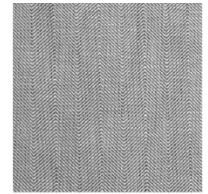
Article Reference	Chevron 3114			
No. of Colors	7			
Width (+/-)	140cms			
Repeat (+/-)	Vertical	0.5cms	Horizontal	7cms
Composition	100% Polyester			
Weight (+/-)	533 gm <sup>2</sup>			
Abrasion Resistance	+30000 Martindale			
Usage	Drapery & Cushion			
Care Instructions				



CHEVRON  
3114-1



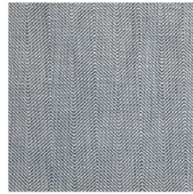
CHEVRON  
3114-2



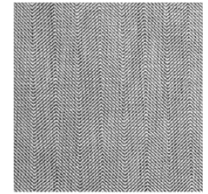
CHEVRON  
3114-3



CHEVRON  
3114-4



CHEVRON  
3114-5



CHEVRON  
3114-6



CHEVRON  
3114-7

## GENGANG 3115

VFM DESIGN




### GENGANG

A simple and classy checkered pattern

A delicate weave lifts the checkered pattern out of its surface making it prominent and in contrast with a simple textured background, conveying a sense of comfort and subtle refinement.

#### Keywords:

Checked, crisscross, linear, simple

Article Reference	Gengang 3115			
No. of Colors	7			
Width (+/-)	140cms			
Repeat (+/-)	Vertical	32cms	Horizontal	34cms
Composition	100% Polyester			
Weight (+/-)	540 gm <sup>2</sup>			
Abrasion Resistance	+30000 Martindale			
Usage	Cushion, Upholstery			
Care Instructions				



GENGANG  
3115-1



GENGANG  
3115-2



GENGANG  
3115-3



GENGANG  
3115-4



GENGANG  
3115-5



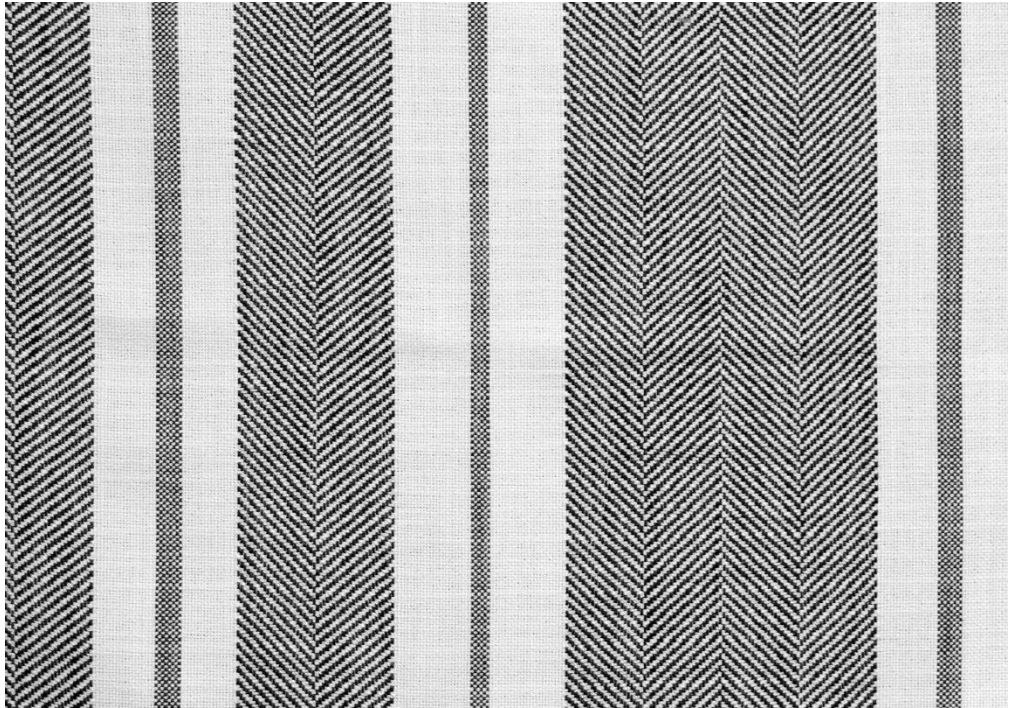
GENGANG  
3115-6



GENGANG  
3115-7

# BAYADORA 3116

VFM DESIGN



## BAYADORA

Effortlessly fluid in its linear beauty

With a simple and subtle weave, this design provides a light and easy feeling to any interior, exhibiting bayadere like linearity with alternating simple and chevron stripes.

### Keywords:

Bayadere, stripes, simple, subtle

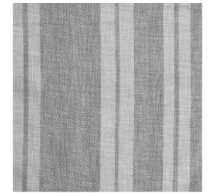
Article Reference	Bayadora 3116			
No. of Colors	7			
Width (+/-)	140cms			
Repeat (+/-)	Vertical	NA	Horizontal	34cms
Composition	100% Polyester			
Weight (+/-)	540 gm <sup>2</sup>			
Abrasion Resistance	+30000 Martindale			
Usage	Drapery, Cushion			
Care Instructions				



BAYADORA  
3116-1



BAYADORA  
3116-2



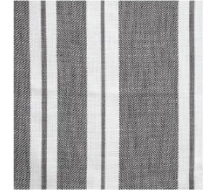
BAYADORA  
3116-3



BAYADORA  
3116-4



BAYADORA  
3116-5



BAYADORA  
3116-6



BAYADORA  
3116-7

## Collection Name: ELEMENTS

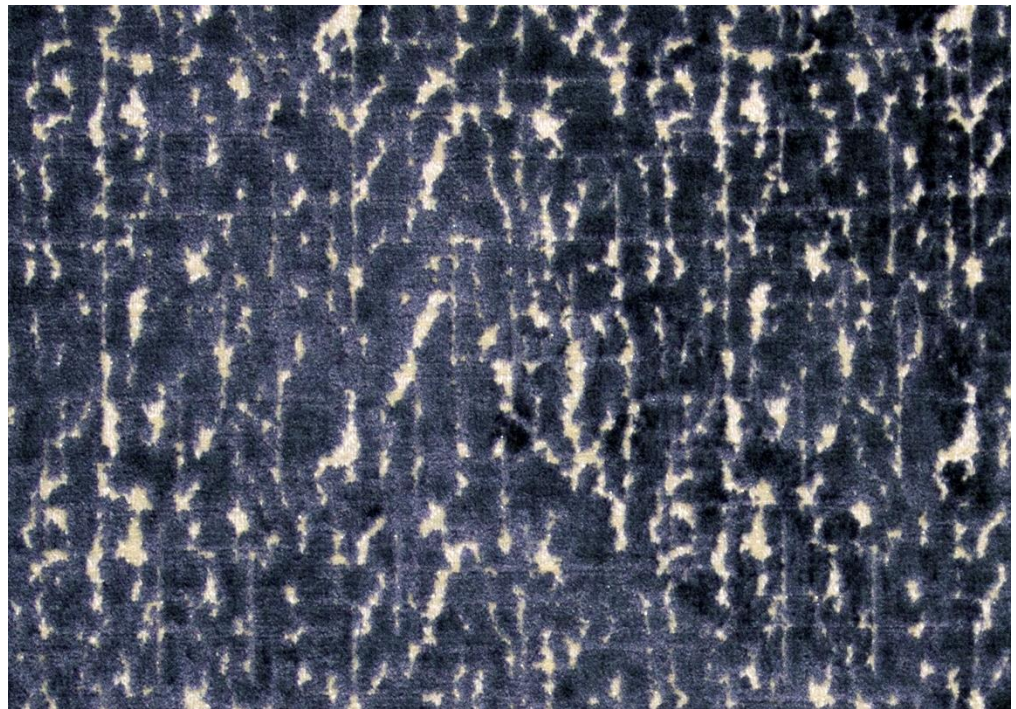
Elements of nature woven in breathtaking designs

Artsy depictions of botanical patterns, textures inspired by woods, and soft plush materials, all create an embodiment of nature. A variety of organic hues and captivating designs from delicate to rugged, bring versatility and adaptability with eight coordinated designs in six enchanting colorways, ready to harmoniously blend into and enhance any interior that they adorn.

### Keywords:

Velvets, jacquards, embroideries, prints and more





**MEADOW**

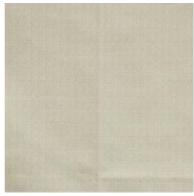
Mossy floor of a mystical wonderland meadow

A jacquard velvet with a unique blend of yarns and a seemingly etched abstract woodsy pattern in a subtle texture that conjures a rustic look, personifying nature and bringing a sense of magical realism to any interior.

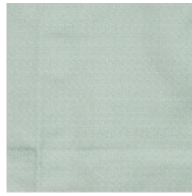
**Keywords:**

Woodsy, natural, rustic, velvet

Article Reference	Meadow 3117			
No. of Colors	6			
Width (+/-)	140cms			
Repeat (+/-)	Vertical	13.2cms	Horizontal	18.3cms
Composition	17% Polyester, 44% Viscose, 39% Cotton			
Weight (+/-)	491 gm <sup>2</sup>			
Abrasion Resistance	+30000 Martindale			
Usage	Cushion, Upholstery			
Care Instructions				



MEADOW  
3117-1



MEADOW  
3117-2



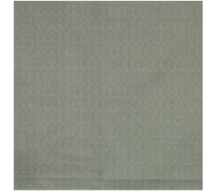
MEADOW  
3117-3



MEADOW  
3117-4



MEADOW  
3117-5



MEADOW  
3117-6








**SPRING**

Stylizing the bounty and abundance of spring

An artsy depiction of natural flora with a slightly vintage look exudes a blossoming and peaceful aura, bringing the foliage of spring to any designed interior.

**Keywords:**

Floral, natural, flora, vintage

Article Reference	Spring 3118			
No. of Colors	6			
Width (+/-)	140cms			
Repeat (+/-)	Vertical	16.2cms	Horizontal	26cms
Composition	70% Polyester, 30% Cotton			
Weight (+/-)	314 gm <sup>2</sup>			
Abrasion Resistance	N/A			
Usage	Drapery & Cushion			
Care Instructions	    			



SPRING  
3118-1



SPRING  
3118-2



SPRING  
3118-3



SPRING  
3118-4



SPRING  
3118-5



SPRING  
3118-6



**OASIS**

The beauty of the grassy woods

Portraying an abstract and rugged presence, this softly textured pattern with a woody look evokes an impactful aura, embodying the essence of the woodlands, and bringing a slice of nature to any designed interior.

**Keywords:**

Woodsy, soft, abstract, grassy

Article Reference	Oasis 3119			
No. of Colors	6			
Width (+/-)	140cms			
Repeat (+/-)	Vertical	38.7cms	Horizontal	35cms
Composition	87% Polyester, 13% Viscose			
Weight (+/-)	606 gm <sup>2</sup>			
Abrasion Resistance	+30000 Martindale			
Usage	Cushion, Upholstery			
Care Instructions				



OASIS  
3119-1



OASIS  
3119-2



OASIS  
3119-3



OASIS  
3119-4



OASIS  
3119-5



OASIS  
3119-6

## SKYLINE 3120

VFM DESIGN



### SKYLINE

A celestial moment of cloudy beauty

With its abstract, light, and fluffy patterned depiction of clouds, this upholstery design embodies the heavenly expanse of the sky, evoking lavish comfort and style in the mood of the design scheme.

#### Keywords:

Clouds, abstract, light, sky

Article Reference	Skyline 3120			
No. of Colors	6			
Width (+/-)	140cms			
Repeat (+/-)	Vertical	16.9cms	Horizontal	17.5cms
Composition	85% Polyester, 15% Viscose			
Weight (+/-)	766 gm <sup>2</sup>			
Abrasion Resistance	+30000 Martindale			
Usage	Cushion, Upholstery			
Care Instructions	☒ ☒ ☒ ☒ ☒			



SKYLINE  
3120-1



SKYLINE  
3120-2



SKYLINE  
3120-3



SKYLINE  
3120-4



SKYLINE  
3120-5



SKYLINE  
3120-6

## BLOSSOM 3121

VFM DESIGN




### BLOSSOM

A coy gaze of nature on blossoms

A simply sweet floral pattern embroidered on a textured and contrasting light background evokes the purest sense of delicacy, bringing a dainty and soft vibe with this lightweight fabric.

#### Keywords:

Floral, simple, delicate, light

Article Reference	Blossom 3121			
No. of Colors	6			
Width (+/-)	140cms			
Repeat (+/-)	Vertical	24cms	Horizontal	18.57cms
Composition	85% Polyester, 15% Cotton			
Weight (+/-)	173 gm <sup>2</sup>			
Abrasion Resistance	N/A			
Usage	Drapery & Cushion			
Care Instructions				



BLOSSOM  
3121-1



BLOSSOM  
3121-2



BLOSSOM  
3121-3



BLOSSOM  
3121-4



BLOSSOM  
3121-5



BLOSSOM  
3121-6



**VERDURE**

An exquisite bloom in full glory

An abstract floral pattern printed with dainty hues, evokes an airy and delicate feel in this semitransparent lightweight fabric, exuding an aura of charming grace derived from mother nature.

**Keywords:**

Delicate, airy, floral, print

Article Reference	Verdure 3122			
No. of Colors	6			
Width (+/-)	140cms			
Repeat (+/-)	Vertical	46.71cms	Horizontal	45.72cms
Composition	73% Polyester, 27% Cotton			
Weight (+/-)	107 gm <sup>2</sup>			
Abrasion Resistance	N/A			
Usage	Drapery & Cushion			
Caring instruction				



VERDURE  
3122-1



VERDURE  
3122-2



VERDURE  
3122-3



VERDURE  
3122-4



VERDURE  
3122-5



VERDURE  
3122-6



**DEMESNE**

A delightfully curvaceous flowy design

Swirling, and swooping patterns with organic hues impart an illustrative and imaginative look to this seemingly engraved jacquard velvet upholstery, bringing a creative feel with an eclectic blend of natural and synthetic yarns.

**Keywords:**

Flowy, wavy, curvaceous, velvet

Article Reference	Demesne 3123			
No. of Colors	6			
Width (+/-)	140cms			
Repeat (+/-)	Vertical	12.7cms	Horizontal	11.6cms
Composition	14% Polyester, 53% Viscose, 33% Cotton			
Weight (+/-)	595 gm <sup>2</sup>			
Abrasion Resistance	+30000 Martindale			
Usage	Cushion, Upholstery			
Caring instruction				



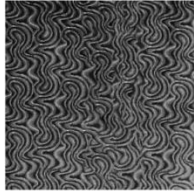
DEMESNE  
3123-1



DEMESNE  
3123-2



DEMESNE  
3123-3



DEMESNE  
3123-4



DEMESNE  
3123-5



DEMESNE  
3123-6




**ESPLENADE**

An expressive hint of a dense shrubbery

An abstract textured design reminiscent of natural elements that appear to be carved in the imagery of a mature forest, blending harmoniously with a subtle criss-cross pattern that adds character to this jacquard velvet upholstery.

**Keywords:**

Flora, crisscross, nature, velvet

Article Reference	Esplanade 3124			
No. of Colors	6			
Width (+/-)	140cms			
Repeat (+/-)	Vertical	25.4cms	Horizontal	35cms
Composition	17% Polyester, 44% Viscose, 39% Cotton			
Weight (+/-)	491 gm <sup>2</sup>			
Abrasion Resistance	+30000 Martindale			
Usage	Cushion, Upholstery			
Caring instruction				



ESPLERADE  
3124-1



ESPLERADE  
3124-2



ESPLERADE  
3124-3



ESPLERADE  
3124-4



ESPLERADE  
3124-5



ESPLERADE  
3124-6

## Collection Name: OPERA

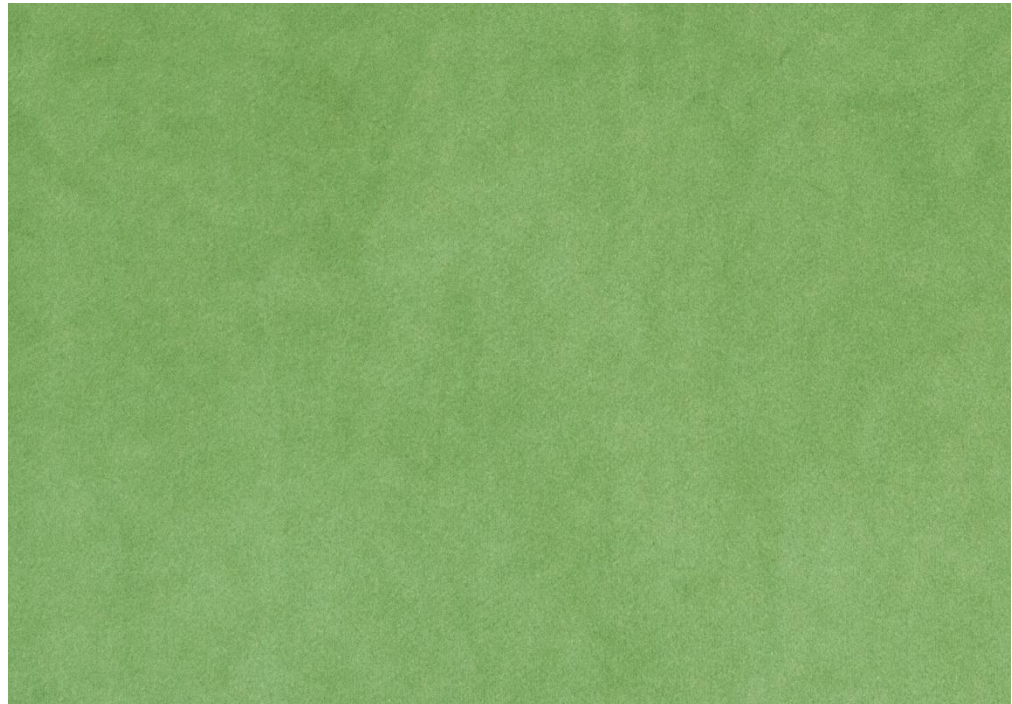
A dramatic musical story to captivate the senses

Elegant geometric patterns quilted with a velvet face exude a smooth and soft luxury. A basic plain velvet and three chic puffed designs in seven trendy colors, accentuated by visible quilting stitches emerge from the face of the velvet with lavish opulence, adding magnificence and grandeur to any interior used as upholstery, headboards, cushions, bed throws, and more.

### Keywords:

Quilted, multipurpose, velvet, geometric





**JAZZY**

Simply yet fancy and sultry velvet

A simple, no-frills velvet with a soft luxurious feel, with a lavish promise of style in any interior that it graces with its presence. The plain velvet is the face of other quilted designs in the collection.

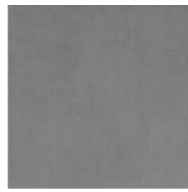
**Keywords:**

Simple, luxurious, velvet, fancy

Article Reference	Jazzy 3125			
No. of Colors	18			
Width (+/-)	140cms			
Repeat (+/-)	Vertical	N/A	Horizontal	N/A
Composition	100% Polyester			
Weight (+/-)	300 gm <sup>2</sup>			
Abrasion Resistance	+30000 Martindale			
Usage	Drapery, Cushion, Upholstery			
Caring instruction				



JAZZY  
3125-1



JAZZY  
3125-2



JAZZY  
3125-3



JAZZY  
3125-4



JAZZY  
3125-5



JAZZY  
3125-6



JAZZY  
3125-7



JAZZY  
3125-8



JAZZY  
3125-9



JAZZY  
3125-10



JAZZY  
3125-11



JAZZY  
3125-12



JAZZY  
3125-13



JAZZY  
3125-14



JAZZY  
3125-15



JAZZY  
3125-16



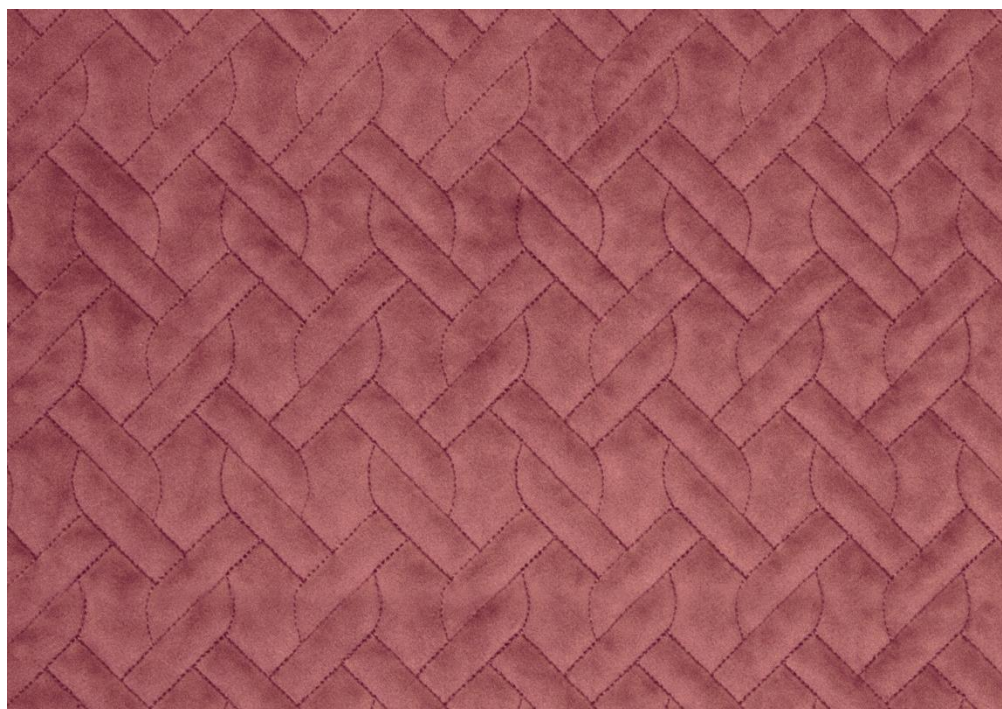
JAZZY  
3125-17



JAZZY  
3125-18

## SPALLIERA 3127

VFM DESIGN



### SPALLIERA

A luxurious and glorious gala grille design

An intertwining, braided, geometric pattern quilted on a smooth jazzy velvet, reminiscent of lavish art-deco style, brings a sense of opulence and extravagance to the multiple applications that this fabric can fulfil.

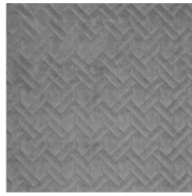
#### Keywords:

Simple, braided, quilted, velvet

Article Reference	Spalliera 3127			
No. of Colors	7			
Width (+/-)	140cms			
Repeat (+/-)	Vertical	8cms	Horizontal	4.5cms
Composition	100% Polyester			
Weight (+/-)	400 gm <sup>2</sup>			
Abrasion Resistance	+30000 Martindale			
Usage	Cushion, Upholstery			
Caring instruction				



SPALLIERA  
3127-1



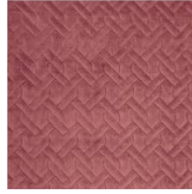
SPALLIERA  
3127-2



SPALLIERA  
3127-3



SPALLIERA  
3127-4



SPALLIERA  
3127-5



SPALLIERA  
3127-6



SPALLIERA  
3127-7

## DIAMANTE 3128

VFM DESIGN




### DIAMANTE

Diamond design with a classy lavish allure

A repeating quilted diamond pattern on a smooth jazzy velvet evokes a sense of opulence and grandeur, exuding wealth and abundance in the multiple applications that this fabric can fulfil.

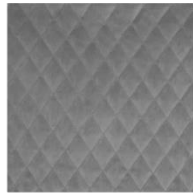
#### Keywords:

Simple, diamond, quilted, velvet

Article Reference	Diamante 3128			
No. of Colors	7			
Width (+/-)	140cms			
Repeat (+/-)	Vertical	6cms	Horizontal	3.8cms
Composition	100% Polyester			
Weight (+/-)	400 gm <sup>2</sup>			
Abrasion Resistance	+30000 Martindale			
Usage	Cushion, Upholstery			
Caring instruction				



DIAMANTE  
3128-1



DIAMANTE  
3128-2



DIAMANTE  
3128-3



DIAMANTE  
3128-4



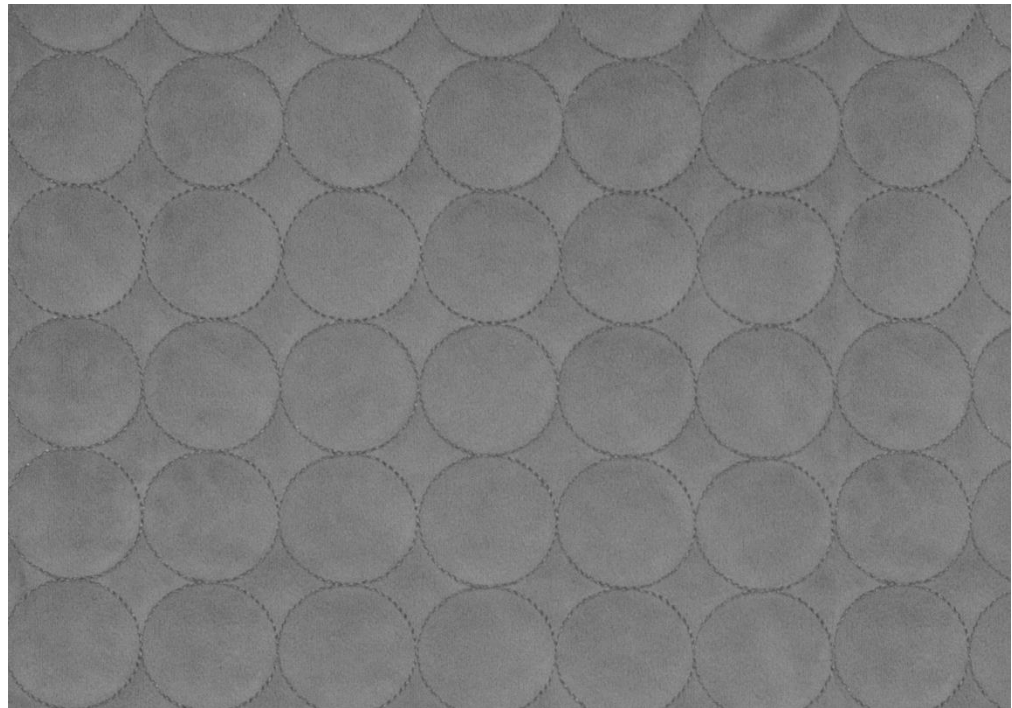
DIAMANTE  
3128-5



DIAMANTE  
3128-6



DIAMANTE  
3128-7



**ANILLO**

Simple, yet visibly wealthy circular design

Subtle consecutive circles quilted on a smooth jazzy velvet enchant with an appeal of splendor and magnificence in the multiple applications that this fabric can fulfil.

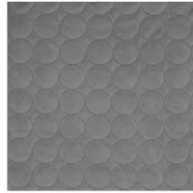
**Keywords:**

Simple, ring, circular, velvet

Article Reference	Anillo 3129			
No. of Colors	7			
Width (+/-)	140cms			
Repeat (+/-)	Vertical	4cms	Horizontal	4cms
Composition	100% Polyester			
Weight (+/-)	400 gm <sup>2</sup>			
Abrasion Resistance	+30000 Martindale			
Usage	Cushion, Upholstery			
Caring instruction				



ANILLO  
3129-1



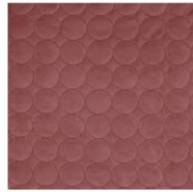
ANILLO  
3129-2



ANILLO  
3129-3



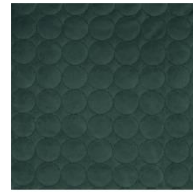
ANILLO  
3129-4



ANILLO  
3129-5



ANILLO  
3129-6



ANILLO  
3129-7

## Collection Name: ESCAPADE

A charmingly vivid and colorful haven

A cornucopia of patterns ranging from subtle and lavish, to bold and flamboyant demonstrate versatility, with 11 designs organized in four coordinated color stories, to suit the demands of any stylish interior. Delicate yet chic textures on a variety of fabric qualities enhance the adaptability of the curated assembly, transforming it into a luxurious escapade.

### Keywords:

Variety, vibrant, versatile, retreat





**MISSION**

On a mission to create a chic moment

An abstract linear pattern with overlapping dotted shapes of varying intensity, printed in contrast on a light background of a strong cotton base, on a mission to create a sketchy chic aura.

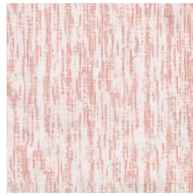
**Keywords:**

Abstract, contrast, dotted, linear

Article Reference	Mission 3130			
No. of Colors	4			
Width (+/-)	140cms			
Repeat (+/-)	Vertical	34.29cms	Horizontal	34.29cms
Composition	100% Cotton			
Weight (+/-)	341 gm <sup>2</sup>			
Abrasion Resistance	N/A			
Usage	Drapery, Cushion, Upholstery			
Caring instruction				



MISSION  
3130-1



MISSION  
3130-2



MISSION  
3130-3



MISSION  
3130-4



**ALON**

A smooth, flowing geode like design

A swirly and artistic abstraction of beautiful, natural geode formations, printed on a light-colored cotton base, capturing the essence of subtlety and relaxation in any interior.

**Keywords:**

Abstract, natural, geode, swirl

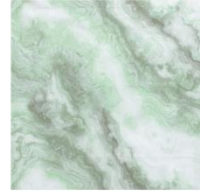
Article Reference	Alon 3131			
No. of Colors	4			
Width (+/-)	140cms			
Repeat (+/-)	Vertical	177.5cms	Horizontal	45cms
Composition	100% Cotton			
Weight (+/-)	341 gm <sup>2</sup>			
Abrasion Resistance	N/A			
Usage	Drapery, Cushion, Upholstery			
Caring instruction				



ALON  
3131-1



ALON  
3131-2



ALON  
3131-3



ALON  
3131-4



**ALEZA**

On a walk through the woods

A busy design of overlapping patterns with organic hues creates an organized chaos, bringing a rustic and natural woody ambience with this printed soft velvet.

**Keywords:**

Rustic, organic, busy, velvet

Article Reference	Aleza 3132			
No. of Colors	3			
Width (+/-)	140cms			
Repeat (+/-)	Vertical	34.25cms	Horizontal	33.33cms
Composition	100% Polyester			
Weight (+/-)	350 gm <sup>2</sup>			
Abrasion Resistance	+30000 Martindale			
Usage	Cushion, Upholstery			
Caring instruction				



ALEZA  
3132-1



ALEZA  
3132-2



ALEZA  
3132-3



**BOSQUE**

An imagery of a clump of vertical tree trunks

Simple vertical patterns with organic and naturally gradient hues printed on a cotton base evokes a sense of simple linear harmony hinting at the vista in a dense forest of tall tree trunks.

**Keywords:**

Simple, gradient, linear, print

Article Reference	Bosque 3133			
No. of Colors	4			
Width (+/-)	140cms			
Repeat (+/-)	Vertical	N/A	Horizontal	68cms
Composition	100% Cotton			
Weight (+/-)	341 gm <sup>2</sup>			
Abrasion Resistance	N/A			
Usage	Drapery, Cushion, Upholstery			
Caring instruction				



BOSQUE  
3133-1



BOSQUE  
3133-2



BOSQUE  
3133-3



BOSQUE  
3133-4



**GRILLE**

A unique and bold moment of style

With grille like patches of contrasting hues and textures embroidered on a lightly printed jacquard background, this layered design exudes an aura of stylized elegance as a lightweight drapery.

**Keywords:**

Embroidery, light, stylish, busy

Article Reference	Grille 3134			
No. of Colors	5			
Width (+/-)	140cms			
Repeat (+/-)	Vertical	24cms	Horizontal	32.5cms
Composition	100% Polyester with Embroidery			
Weight (+/-)	221 gm <sup>2</sup>			
Abrasion Resistance	N/A			
Usage	Drapery, Cushion			
Caring instruction				



GRILLE  
3134-1



GRILLE  
3134-2



GRILLE  
3134-3



GRILLE  
3134-4



GRILLE  
3134-5



**ARENA**

Brick by brick, block by block

Organic hues and abstract, rugged patterns evoke a rustic and natural feel in this abstract printed velvet with a pleasantly busy façade.

**Keywords:**

Abstract, print, busy, velvet

Article Reference	Arena 3135			
No. of Colors	3			
Width (+/-)	140cms			
Repeat (+/-)	Vertical	31.07cms	Horizontal	36.91cms
Composition	100% Polyester			
Weight (+/-)	350 gm <sup>2</sup>			
Abrasion Resistance	+30000 Martindale			
Usage	Cushion, Upholstery			
Caring instruction				



ARENA  
3135-1



ARENA  
3135-2



ARENA  
3135-3

## ORCHARD 3136

VFM DESIGN



### ORCHARD

A mysterious yet enticing orchard

A watercolor styled depiction of natural flora printed in bold and vibrant contrasting hues on a cotton-based ground, creating a strong and enticing attractive force with a palpable allure.

#### Keywords:

Flora, natural, watercolor, bold

Article Reference	Orchard 3136			
No. of Colors	4			
Width (+/-)	140cms			
Repeat (+/-)	Vertical	45.72cms	Horizontal	45.72cms
Composition	100% Cotton			
Weight (+/-)	341 gm <sup>2</sup>			
Abrasion Resistance	N/A			
Usage	Drapery, Cushion, Upholstery			
Caring instruction				



ORCHARD  
3136-1



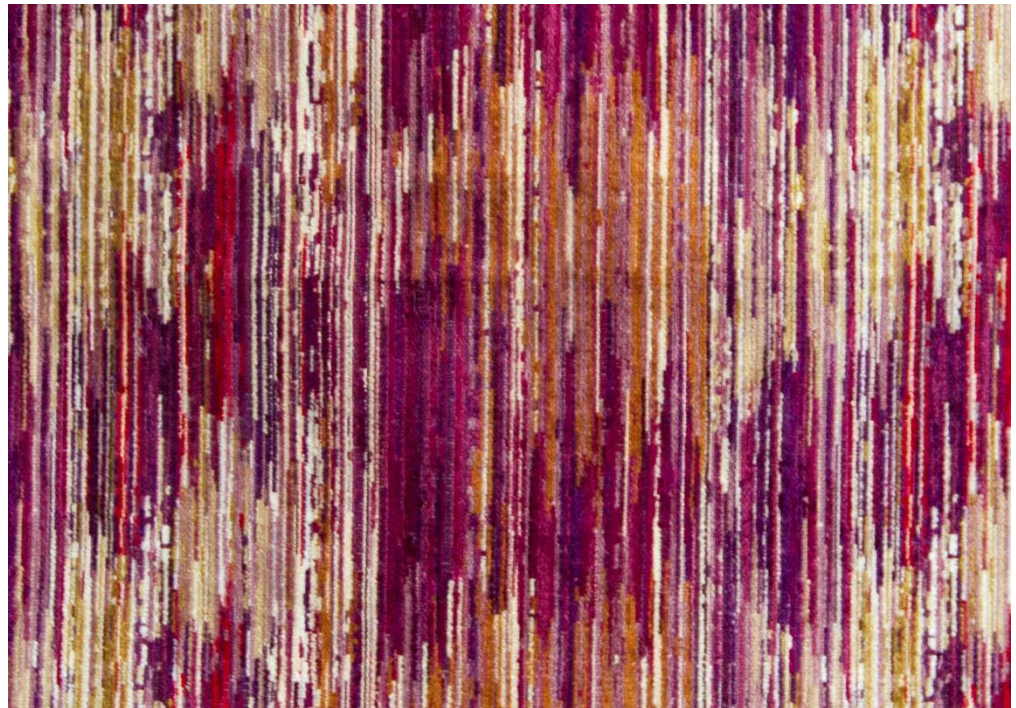
ORCHARD  
3136-2



ORCHARD  
3136-3



ORCHARD  
3136-4



**FANTAISIE**

An alluring illusion in intermingled linearity

A flashy and opulent linear-patterned jacquard velvet, created with a blend of yarns that are enhanced by a multitude of colors, to project a fantastical grandeur and impart a unique flamboyant character to this sturdy upholstery with a linear design.

**Keywords:**

Flashy, alluring, linear, velvet

Article Reference	Fantaisie 3137			
No. of Colors	4			
Width (+/-)	140cms			
Repeat (+/-)	Vertical	23cms	Horizontal	35cms
Composition	44% Polyester, 56% Viscose			
Weight (+/-)	491 gm <sup>2</sup>			
Abrasion Resistance	+30000 Martindale			
Usage	Cushion, Upholstery			
Caring instruction				



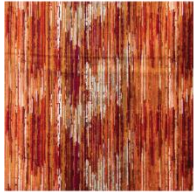
FANTAISE  
3137-1



FANTAISE  
3137-2



FANTAISE  
3137-3



FANTAISE  
3137-4

## FEATHER 3138

VFM DESIGN



### FEATHER

Gorgeous and delicate floating feathers

A resplendent design with feathers in plush hues floating in a bed of clouds, making the design come alive with a flowing aura in this soft velvet.

#### Keywords:

Delicate, soft, feathery, velvet

Article Reference	Feather 3138			
No. of Colors	1			
Width (+/-)	140cms			
Repeat (+/-)	Vertical	53.68	Horizontal	31.54cms
Composition	100% Polyester			
Weight (+/-)	350 gm <sup>2</sup>			
Abrasion Resistance	+30000 Martindale			
Usage	Cushion, Upholstery			
Caring instruction	☒ ☒ ☒ ☒ ☒			

VFM  
DESIGN

[www.vfm-design.com](http://www.vfm-design.com)

**For Enquiries:**

**Europe:**

[office@baumann.co.at](mailto:office@baumann.co.at)

**Middle East:**

[office@warpsandwefts.com](mailto:office@warpsandwefts.com)

**USA:**

[office@baumanndekorusa.com](mailto:office@baumanndekorusa.com)

**India:**

[office@consilioresources.com](mailto:office@consilioresources.com)