

# VFM DESIGN



On request:  
FR Version  
Special Colour

Collection  
**MAGICA**

# MAGICA

by VFM DESIGN

## Weave the Magic of Dreams with Whimsy

MAGICA transforms interiors into enchanting realms, blending whimsical patterns with a dreamlike allure. The flowing elegance of damask-inspired swirls, the rhythmic charm of jagged linear motifs and the subtle sparkle of scattered circular charms are all complemented with a mindful selection of checks and stripes that cast a spell of sophistication. Crafted with a harmonious blend of synthetic and natural fibres, each fabric invites a touch of magic, offering versatile elegance for upholstery and decorative accents across a variety of enchanting colorways.

MYSTIQUE	Page 03
ABRA	Page 05
CADABRA	Page 07
SPELL	Page 10
CHARM	Page 12
ENCHANT	Page 14
CONJURE	Page 17
PRESTO	Page 19



## MYSTIQUE

### A timeless treasure, veiled in mystique

Mystique casts an elegant spell with its flowing, damask-like pattern, where swirling floral motifs are brought to life on a two-tone, dobby base through yarn-dyed embroidery. Blending a rich mix of polyester, cotton, and linen, this fabric drapes interiors in a dreamlike sophistication, perfect for decorative accents that exude timeless magic in any chosen hue.

#### Keywords:

Damask-like, embroidery, decorative, timeless, accent, yarn-dyed, two-tone.

Article Reference	Mystique 3171			
No. of Colors	07			
Width (+/-)	137 cms			
Repeat (+/-)	Vertical	40 cms	Horizontal	44 cms
Composition	71% Polyester, 17% Cotton, 12% Linen			
Weight (+/-)	410 GSM			
Abrasion Resistance	N/A			
Usage	Cushion, Drapery			
Care Instructions				

# MYSTIQUE 3171



3171-01



3171-02



3171-03



3171-04



3171-05



3171-06



3171-07



**ABRA**

**Stripes of Subtle Magic with Rhythmic Flow.**

Abra casts a subtle spell with vertical, yarn-dyed twill stripes, each band a whisper of shifting tones. Woven on a dobby loom, the delicate interplay of linear bands evokes a sense of magical transition, making it an ideal choice for domestic upholstery that seeks to captivate with understated whimsy in any palette.

**Keywords:**

Vertical stripes, shifting tones, magical, transition, twill weave, understated, whimsy.

Article Reference	Abra 3172			
No. of Colors	06			
Width (+/-)	140 cms			
Repeat (+/-)	Vertical	N/A	Horizontal	17.5 cms
Composition	60% Polyester, 25% Cotton, 15% Linen			
Weight (+/-)	270 GSM			
Abrasion Resistance	+40,000 Martindale			
Usage	Upholstery, Cushion, Drapery			
Care Instructions				

# ABRA 3172



3172-01



3172-02



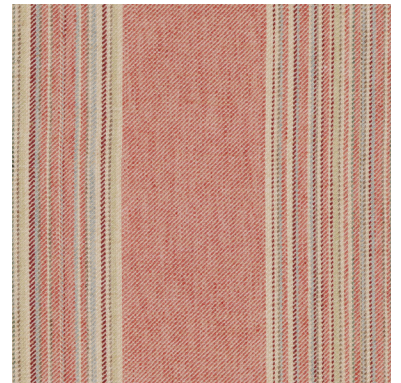
3172-03



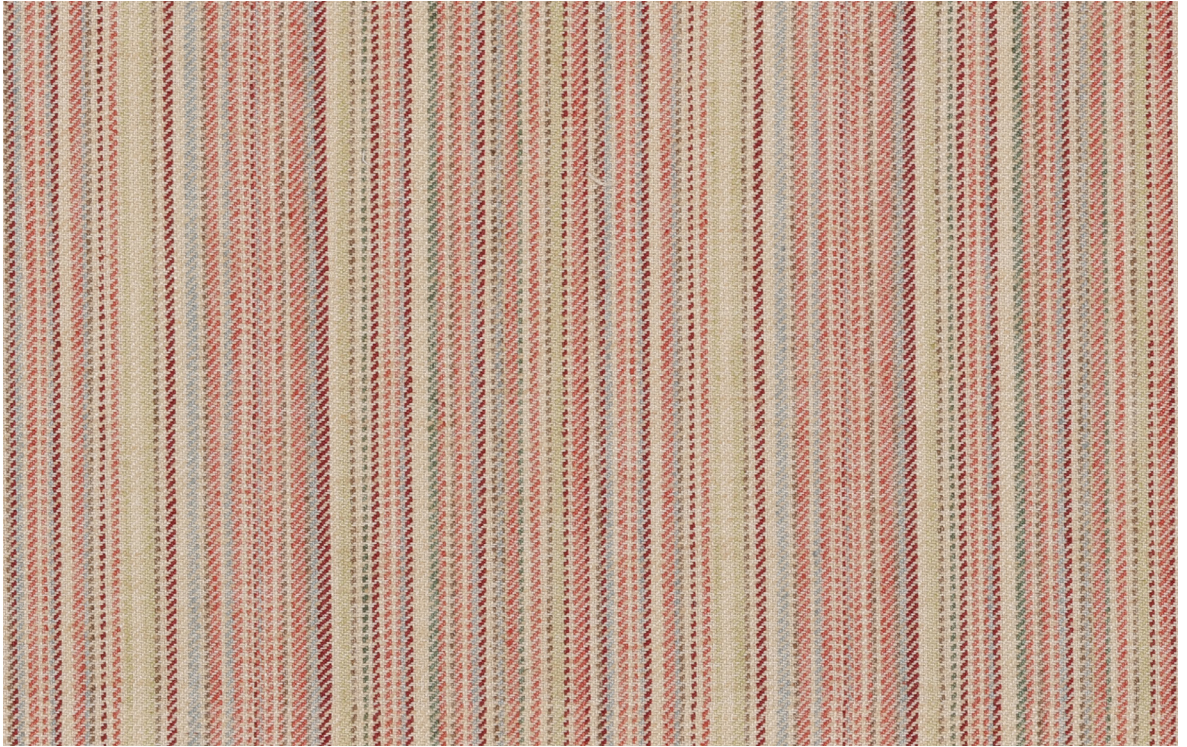
3172-04



3172-05



3172-06



## CADABRA

### Rhythms of Magical Flow with Linear Illusions

Cadabra weaves a spell of rhythmic delight with its vertical, multi-toned twill stripes, to create a linear illusion that dances across the fabric. This whimsical design adds a touch of magical sophistication, perfect for general domestic upholstery that aims to mesmerize in a range of mystical tones.

**Keywords:**

Linear, illusion, upholstery, dobby, yarn-dyed, multi tone, twill weave, rhythmic.

Article Reference	Cadabra 3173			
No. of Colors	06			
Width (+/-)	140 cms			
Repeat (+/-)	Vertical	N/A	Horizontal	11.4 cms
Composition	60% Polyester, 25% Cotton, 15% Linen			
Weight (+/-)	260 GSM			
Abrasion Resistance	+40,000 Martindale			
Usage	Upholstery, Cushion, Drapery			
Care Instructions				

**CADABRA 3173**



3173-01



3173-02



3173-03



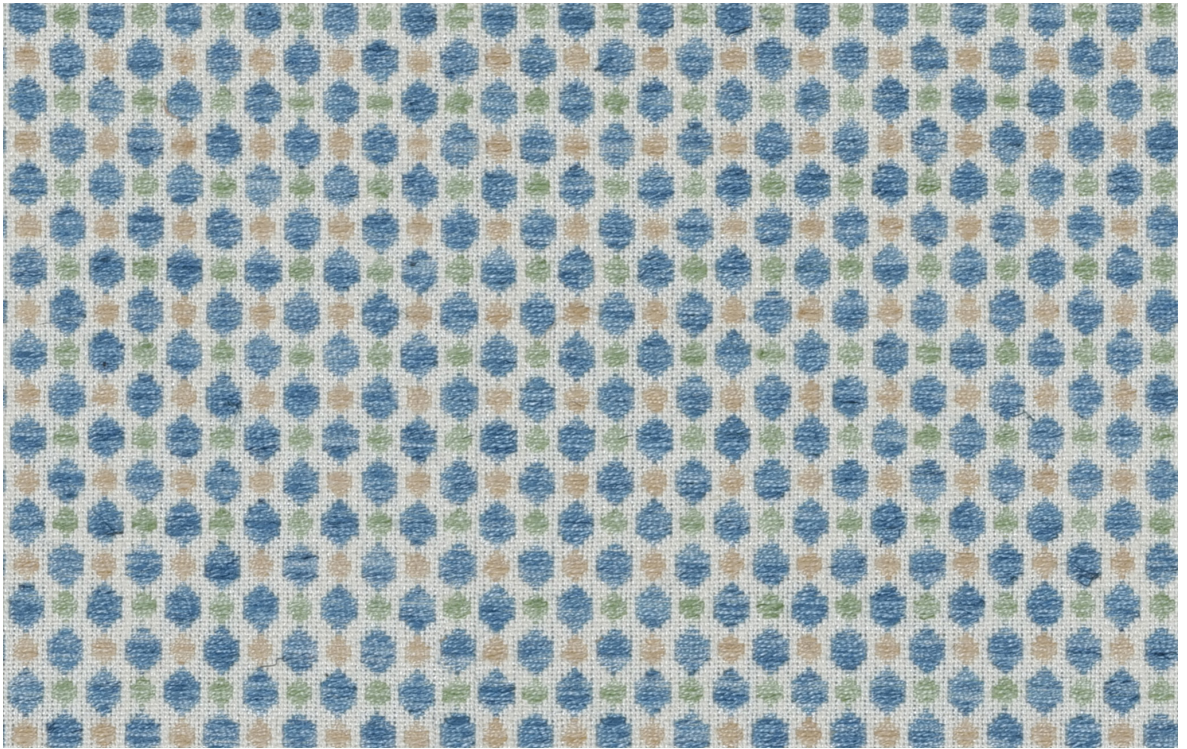
3173-04



3173-05



3173-06



**SPELL**

**Spellbound Spots, Drifting with Grace.**

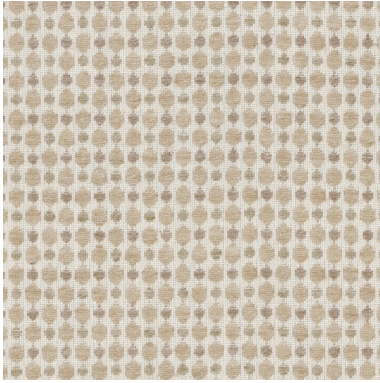
Spell sprinkles a delicate magic with its repeating multi-colored dots, resembling tiny talismans scattered across the fabric. This subtle jacquard pattern evokes a sense of wonder, making it a perfect choice for heavy domestic upholstery that adds a touch of enchantment in any hue, with a durable weave suited for lasting charm.

**Keywords:**

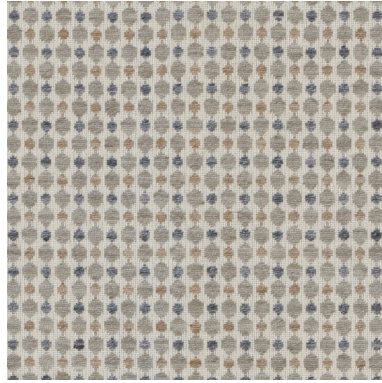
Multi colored dots, scattered, jacquard, heavy domestic upholstery, durable weave.

Article Reference	Spell 3174			
No. of Colors	06			
Width (+/-)	140 cms			
Repeat (+/-)	Vertical	< 1 cm	Horizontal	< 1 cm
Composition	41% Polyester, 48% Cotton, 11% Linen			
Weight (+/-)	355 GSM			
Abrasion Resistance	+45,000 Martindale			
Usage	Upholstery, Cushion, Drapery			
Care Instructions				

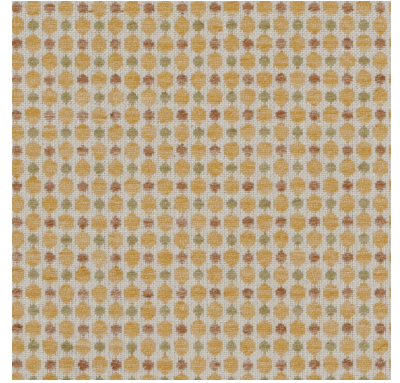
# SPELL 3174



3174-01



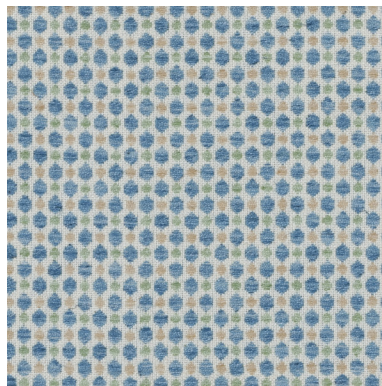
3174-02



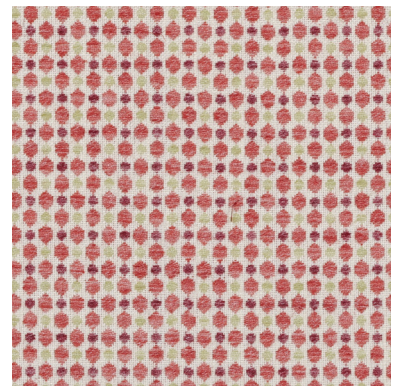
3174-03



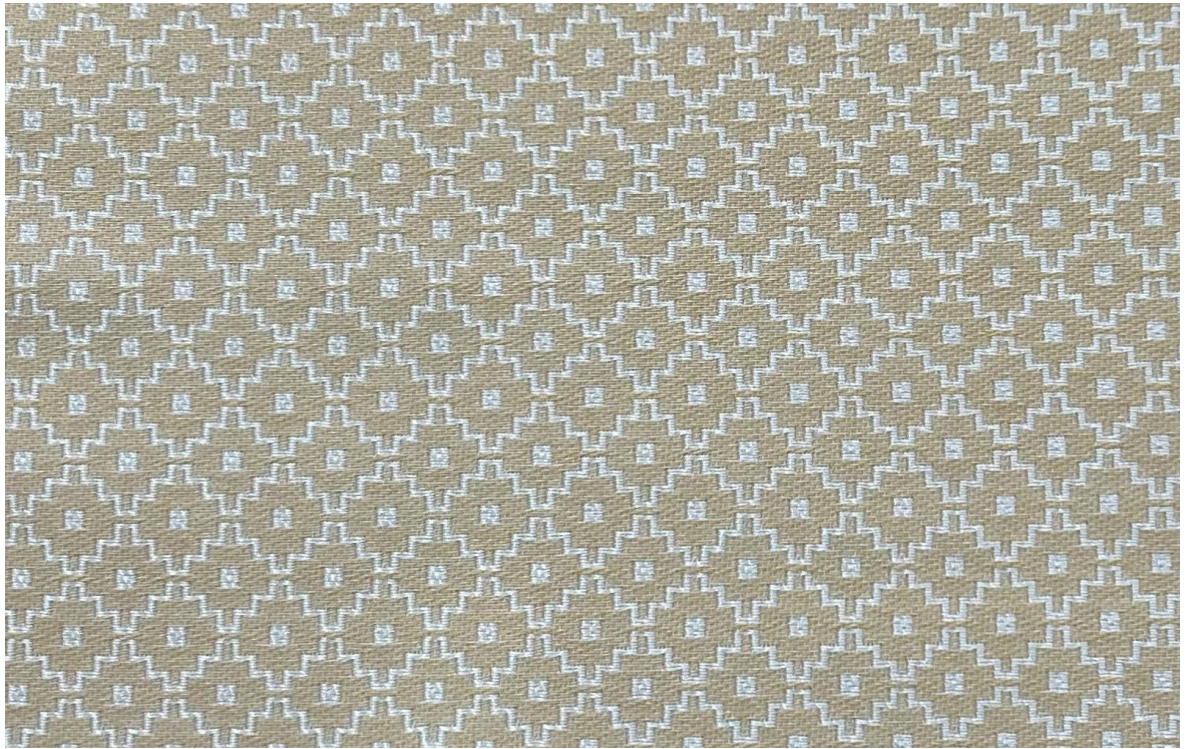
3174-04



3174-05



3174-06



## CHARM

### Geometric Charms Unveiled with Structured Elegance

Charm casts a geometric spell with its diamond jacquard design, creating an intricate web of enchantment across the fabric. This whimsical pattern brings a structured yet magical elegance, ideal for general domestic upholstery that seeks to captivate in a variety of colourways, with a resilient polyester composition for enduring beauty.

**Keywords:**

Diamond, lattice, geometric, upholstery, jacquard, resilient, polyester, enduring.

Article Reference	Charm 3175			
No. of Colors	06			
Width (+/-)	140 cms			
Repeat (+/-)	Vertical	2 cms	Horizontal	1.75 cms
Composition	100% Polyester			
Weight (+/-)	325 GSM			
Abrasion Resistance	+40,000 Martindale			
Usage	Upholstery, Cushion, Drapery			
Care Instructions				

# CHARM 3175



3175-01



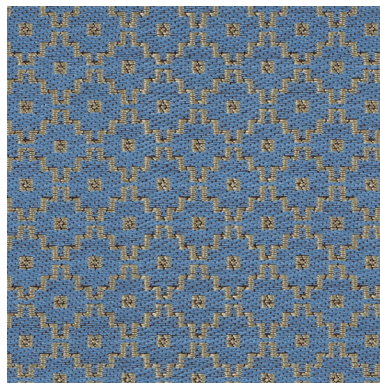
3175-02



3175-03



3175-04



3175-05



3175-06



**ENCHANT**

**Lines of Eclectic Wonder with Shimmering Energy**

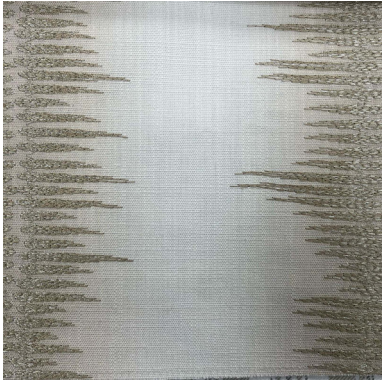
Enchant weaves an eclectic spell with its jagged, vertical lines embroidered on a slubby base fabric, accented with a hint of shimmering Zari. Inspired by the flicker of magical energy, this fabric brings a dynamic elegance to interiors, ideal for decorative accents that captivate in a variety of vibrant shades.

**Keywords:**

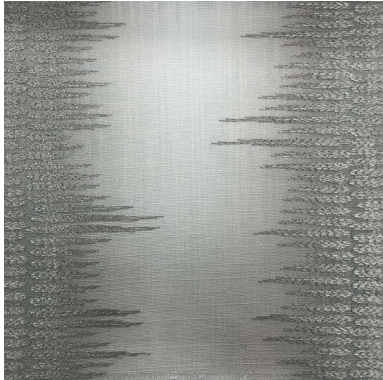
Jagged, vertical, zari, accent, printed, embroidery, decorative, dynamic, energy, slubby base.

Article Reference	Enchant 3176			
No. of Colors	06			
Width (+/-)	140 cms			
Repeat (+/-)	Vertical	40 cms	Horizontal	43 cms
Composition	79% Polyester, 9% Linen, 10% Viscose, 2% Zari			
Weight (+/-)	435 GSM			
Abrasion Resistance	+35,000 Martindale			
Usage	Cushion, Drapery			
Care Instructions				

**ENCHANT 3176**



3176-01



3176-02



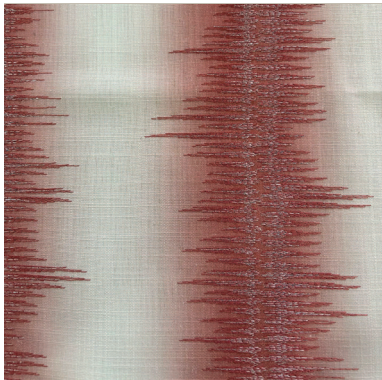
3176-03



3176-04



3176-05



3176-06



**CONJURE**

**Plaid That Conjures a Gentle Spell of Style.**

Conjure summons a timeless charm with its classic yarn-dyed twill checks reimagined with a whimsical flair. The interwoven threads create a magical harmony, making this fabric a versatile choice for general domestic upholstery that blends tradition with a touch of enchantment across multiple colour options, supported by a durable weave for lasting appeal.

**Keywords:**

Classic, plaid, upholstery, durable, dobby, yarn-dyed, twill, checks.

Article Reference	Conjure 3177			
No. of Colors	06			
Width (+/-)	140 cms			
Repeat (+/-)	Vertical	9.75 cms	Horizontal	9.25 cms
Composition	60% Polyester, 25% Cotton, 15% Linen			
Weight (+/-)	265 GSM			
Abrasion Resistance	+40,000 Martindale			
Usage	Upholstery, Cushion, Drapery			
Care Instructions				

# CONJURE 3177



3177-01



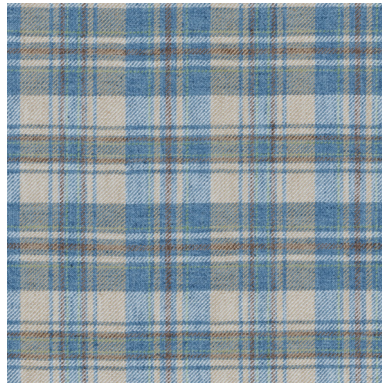
3177-02



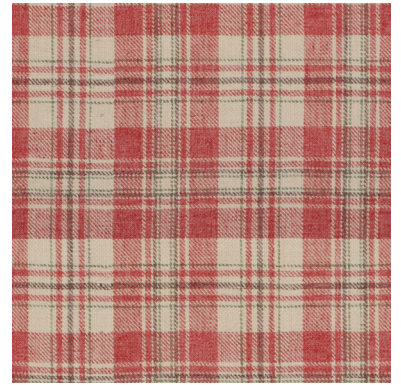
3177-03



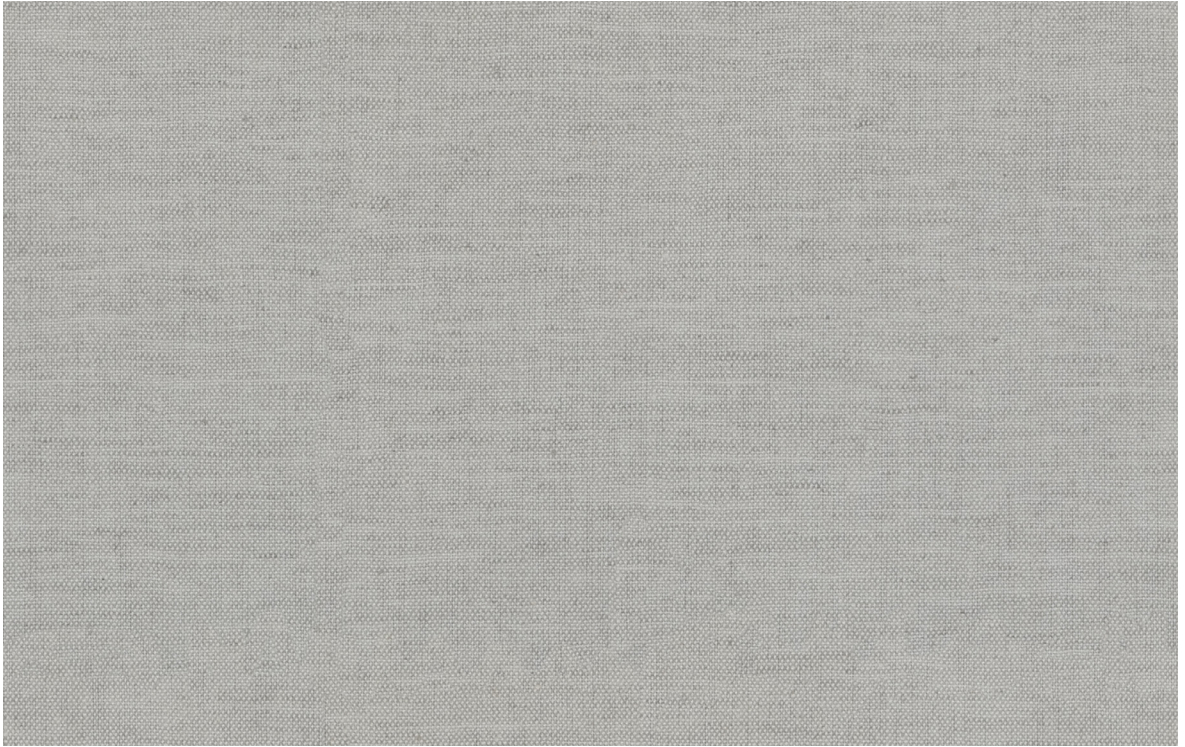
3177-04



3177-05



3177-06



**PRESTO**

**Presto! Timeless Elegance, Effortlessly Simple**

Presto enchants with its understated elegance, a plain weave, two-tone blended fabric that shines through its rich texture in a versatile composition that blends polyester, linen, and cotton. It’s built for general domestic upholstery, while its 12 available colour options—from soft neutrals to bold jewel tones—add a subtle magic to any interior, making it a timeless choice for modern spaces.

**Keywords:**

Rich texture, versatile, domestic upholstery, 12 color, blend, two-tone.

Article Reference	Presto 3178			
No. of Colors	12			
Width (+/-)	140 cms			
Repeat (+/-)	Vertical	N/A	Horizontal	N/A
Composition	60% Polyester, 25% Cotton, 15% Linen			
Weight (+/-)	245 GSM			
Abrasion Resistance	+40,000 Martindale			
Usage	Upholstery, Cushion, Drapery			
Care Instructions				

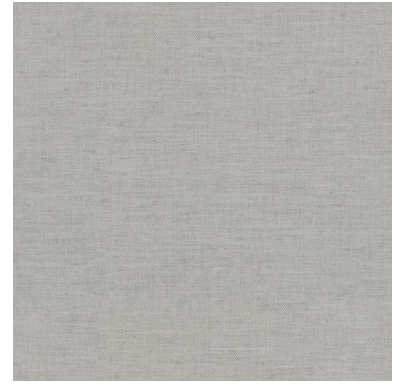
# PRESTO 3178



3178-01



3178-02



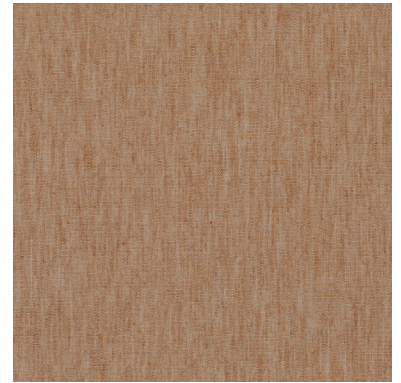
3178-03



3178-04



3178-05



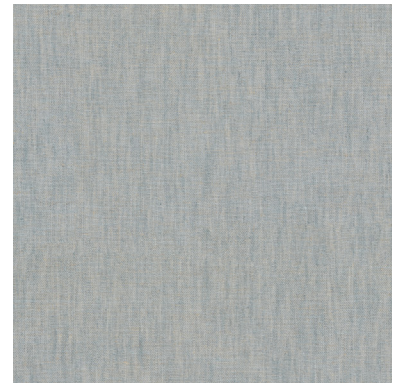
3178-06



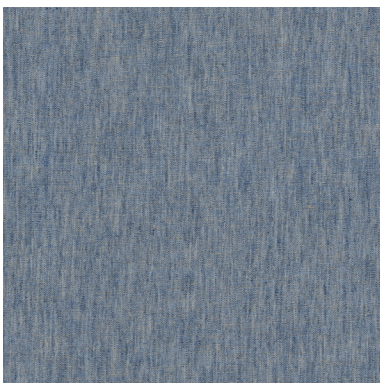
3178-07



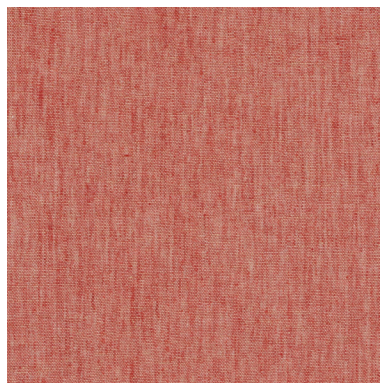
3178-08



3178-09



3178-10



3178-11



3178-12

VFM  
DESIGN

[www.vfm-design.com](http://www.vfm-design.com)

**FOR ENQUIRIES:**

**Europe:**  
[office@baumann.co.at](mailto:office@baumann.co.at)

**USA:**  
[office@baumanndekor.com](mailto:office@baumanndekor.com)

**Middle East:**  
[office@warpsandwefts.com](mailto:office@warpsandwefts.com)

**India:**  
[office@consilioresources.com](mailto:office@consilioresources.com)