

VFM DESIGN



Collection

GAIA



On request:
FR Version
Special Colour

GAIA

by VFM DESIGN

Grounded in nature, elevated in design

GAIA is a tribute to the Earth — a thoughtfully curated collection, where fabric and language meet nature. Each article is named after a synonym for Earth or nature from cultures around the world, grounding the collection in global meaning. Across dobby and jacquard weaves, satin finishes, embroidery, washes, and print techniques, GAIA brings together a spectrum of tactile expressions. From airy sheers to upholstery-grade constructions, the collection explores surface with intention: flowing geometrics, abstract botanicals, and layered textures that echo landscapes, structures, and organic patterns. Crafted in blends of natural and synthetic fibers, every fabric complements interiors rooted in earthy hues and neutral palettes. GAIA is more than a compilation of textiles — it's a material language of the planet, designed to bring rhythm, calm, and soul to any space.



GAIA

MIDORI	Page 3
DHARA	Page 4
AARDE	Page 5
LURRA	Page 7
TERO	Page 8
HESTIA	Page 9
JORD	Page 10
RHEA	Page 11
TERESA	Page 12
ZEM	Page 14
DEMETER	Page 15
MEDINI	Page 16
AFRA	Page 17
SIERRA	Page 18
ERSA	Page 19
KHET	Page 20
DAICHI	Page 21
BHOOMI	Page 22
AVNI	Page 23
LEIGH	Page 24
NELA	Page 25
OMALA	Page 26
ACKER	Page 27
EARTHA	Page 28
NUNA	Page 29
ARTIK	Page 30
LOKA	Page 31



MIDORI

Threads of embroidery caught in the light of nature.

MIDORI features a cotton, oxford-weave base enhanced with intricate embroidery. The golden matte surface adds rich texture, perfect for cushions or curtains. It's use of alluring Zari brings understated shimmer and organic refinement to interiors grounded in earthy, elemental aesthetics.

Keywords: Cotton, Oxford weave, embroidery, golden, zari, shimmer, cushions, curtains.

Article Reference	Midori 3179			
No. of Colors	01			
Width (+/-)	140 cms			
Repeat (+/-)	Vertical	2 cm	Horizontal	2 cm
Composition	55% Cotton, 29% Viscose, 7% Zari, 9% Polyester			
Weight (+/-)	395 g/m ²			
Abrasion Resistance	+15,000 Martindale			
Usage	Decorative			
Care Instructions				



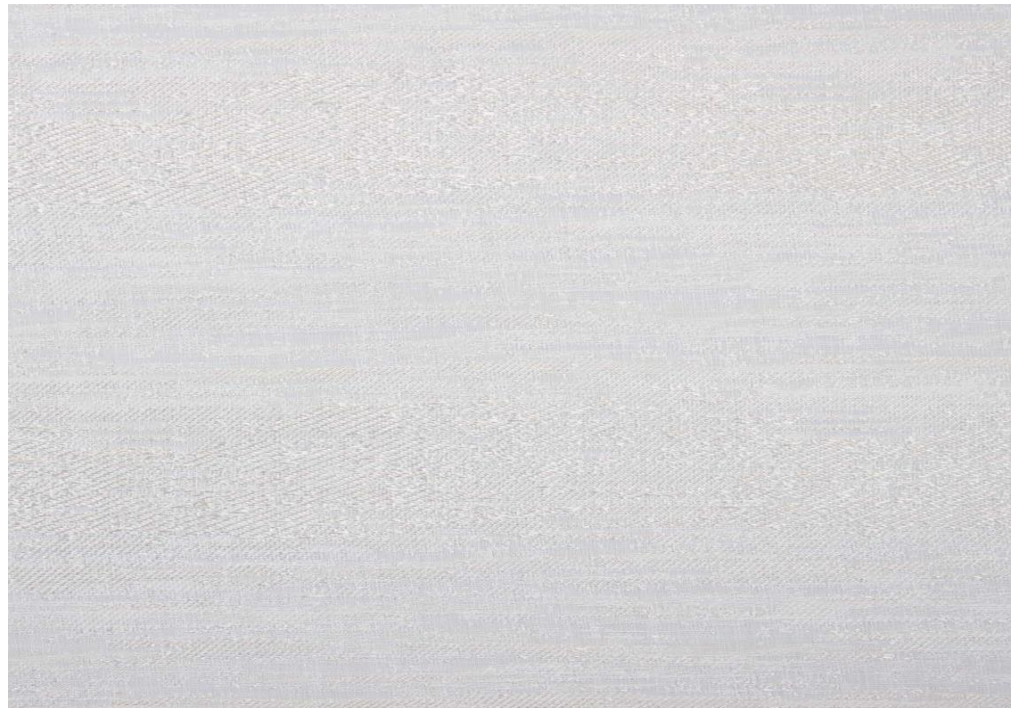
DHARA

Geometry of the earth in motion

DHARA is a 100% cotton jacquard fabric, showcasing bold geometric forms through cut-weft technique. This decorative fabric adds structure to curtains or cushions, lending quiet rhythm and form to interiors inspired by natural patterns and grounded simplicity.

Keywords: 100% cotton, jacquard fabric, bold, geometric, cut-weft, curtains, cushions.

Article Reference	Dhara 3180			
No. of Colors	01			
Width (+/-)	140cms			
Repeat (+/-)	Vertical	7 cm	Horizontal	17.5 cm
Composition	100% Cotton			
Weight (+/-)	285 g/m ²			
Abrasion Resistance	+25,000 Martindale			
Usage	Decorative			
Care Instructions				



AARDE

Breezes caught in nature’s murmur

AARDE is a sheer fabric woven in an abstract jacquard pattern, with a layered look created using contrasting dull and bright yarns. Lightweight and light-filtering, it’s ideal for breezy panels or translucent drapery. The delicate pattern creates subtle motion, perfect for interiors that seek softness rooted in earthy elegance.

Keywords: Sheer, abstract pattern, jacquard, lightweight, light-filtering, breezy.

Article Reference	Aarde 3181			
No. of Colors	02			
Width (+/-)	290 cms			
Repeat (+/-)	Vertical	17.5 cm	Horizontal	19 cm
Composition	100% Polyester			
Weight (+/-)	160 g/m ²			
Abrasion Resistance	N/A			
Usage	Drapery			
Care Instructions				



3181/02



3181/01

LURRA 3182

VFM DESIGN



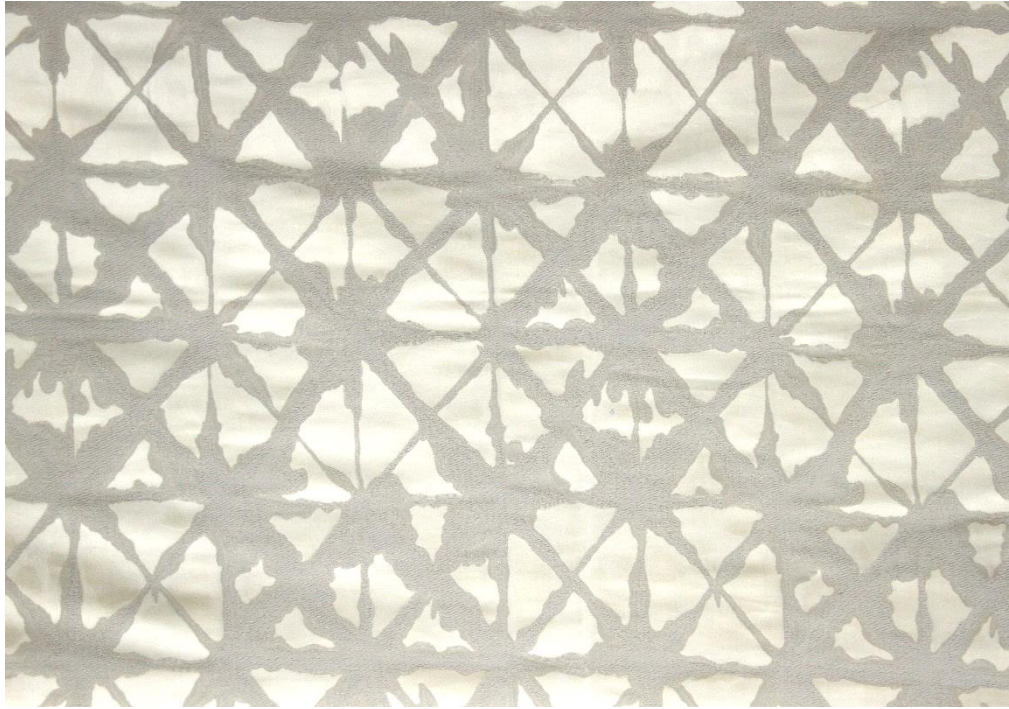
LURRA

Layered like the land, crafted like the hand

LURRA blends dobby weaving with print and embroidery to form layered, flowing textures. The undulating pattern mimics organic strata, making it perfect for decorative cushions or panels. It enriches interiors with handcrafted character and nature-inspired warmth.

Keywords: Dobby, print, embroidery, layered, undulating pattern, organic strata.

Article Reference	Lurra 3182			
No. of Colors	01			
Width (+/-)	140 cms			
Repeat (+/-)	Vertical	N/A	Horizontal	3.5 cm
Composition	94% Polyester, 6% Zari			
Weight (+/-)	300 g/m ²			
Abrasion Resistance	+10,000 Martindale			
Usage	Decorative			
Care Instructions	🧺 ✂️ 🧺 🧺 🧺			



TERO

Stars etched in satin and shadow

TERO is a piece-dyed, monochrome jacquard textile enhanced with satin accents. Its irregular, asymmetric star motifs shimmer subtly across the surface. Ideal for elegant cushions or drapery, TERO introduces celestial geometry to earthy, serene design schemes.

Keywords: Piece-dyed, monochrome, jacquard, satin accents, asymmetric star, drapery.

Article Reference	Tero 3183			
No. of Colors	01			
Width (+/-)	140 cms			
Repeat (+/-)	Vertical	40 cm	Horizontal	34 cm
Composition	25% Nylon, 29% Linen, 46% Viscose			
Weight (+/-)	325 g/m ²			
Abrasion Resistance	+30,000 Martindale			
Usage	Decorative, Upholstery			
Care Instructions				



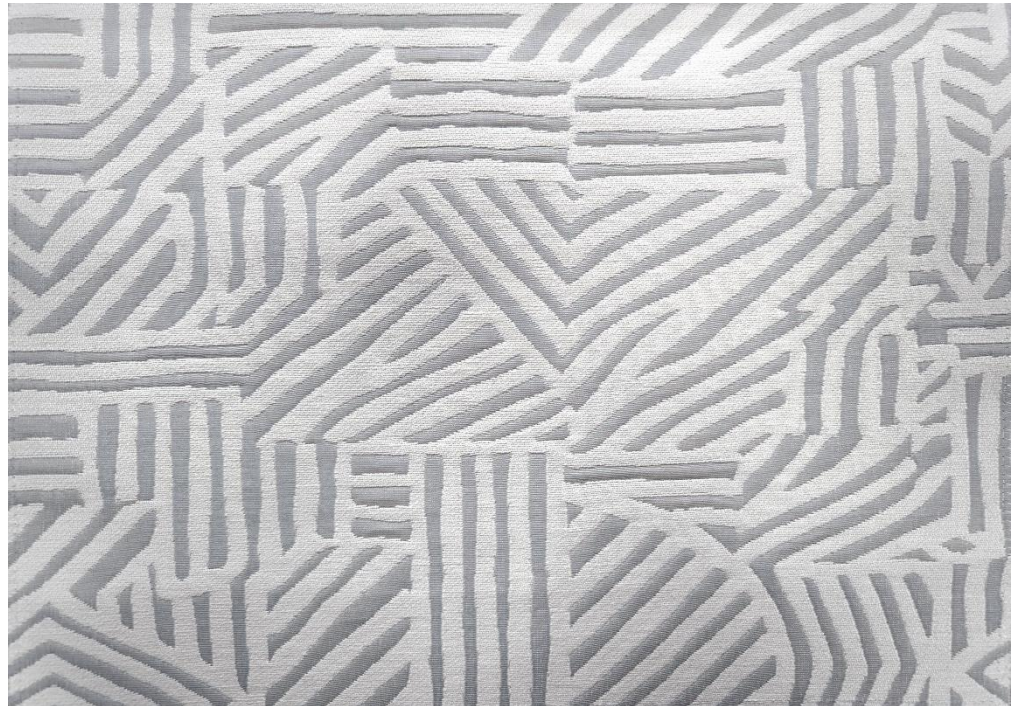
HESTIA

A rustic grace in every stitch

HESTIA is a dobby-woven fabric composed of a polyester-linen blend, softened through fabric washing. Designed for decorative applications like curtains and cushions, it features embroidered ogee shapes elegantly connected by dotted lines. The pattern adds a refined, heritage-inspired softness that brings timeless geometry into warm, grounded interiors

Keywords: Dobby, poly-linen blend, decorative, ogee shapes, dotted lines, heritage.

Article Reference	Hestia 3184			
No. of Colors	01			
Width (+/-)	140 cms			
Repeat (+/-)	Vertical	19.75 cm	Horizontal	10.5 cm
Composition	92% Polyester, 8% Linen			
Weight (+/-)	435 g/m ²			
Abrasion Resistance	+25,000 Martindale			
Usage	Decorative			
Care Instructions				



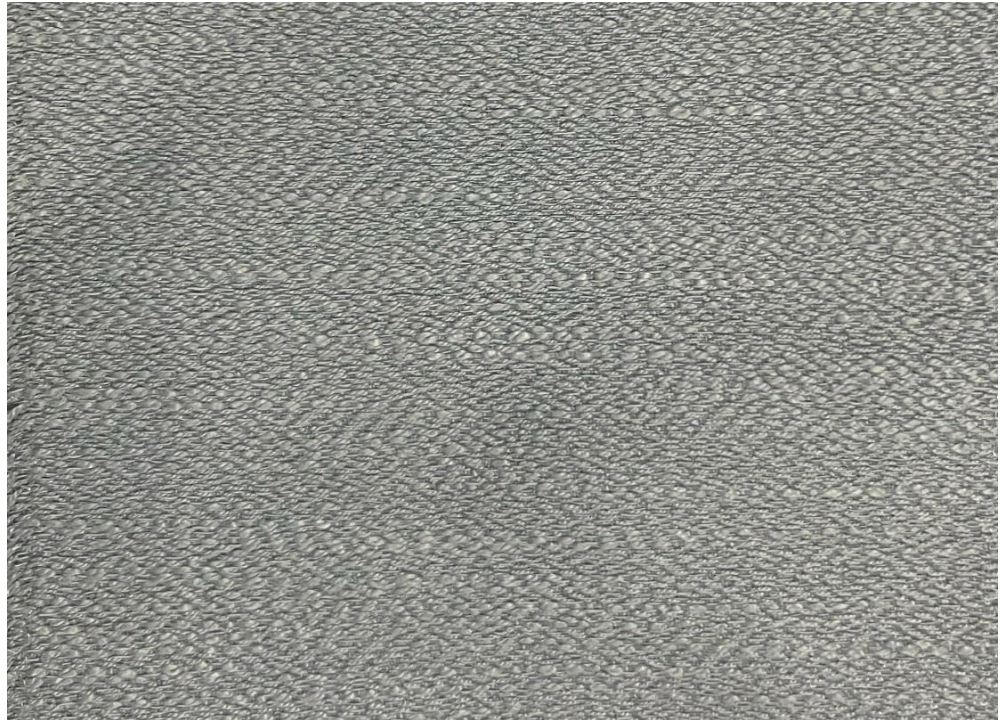
JORD

Pattern and pause in perfect accord.

JORD is a durable jacquard woven from a cotton-viscose-nylon blend, designed for both heavy domestic use and decorative settings. Its yarn-dyed floating stripes form a soft geometric grid with subtle movement. Ideal for upholstery, cushions, or structured drapery, it lends quiet rhythm to interiors rooted in natural balance.

Keywords: Jacquard, durable, cotton-viscose-nylon, heavy domestic use, yarn-dyed, stripes

Article Reference	Jord 3185			
No. of Colors	01			
Width (+/-)	140 cms			
Repeat (+/-)	Vertical	32.5 cm	Horizontal	35 cm
Composition	15% Nylon, 54% Cotton, 31% Viscose			
Weight (+/-)	500 g/m ²			
Abrasion Resistance	+60,000 Martindale			
Usage	Decorative, Upholstery			
Care Instructions				



RHEA

A soft sculpture for living spaces

RHEA is a performance-grade jacquard in piece-dyed polyester, built for heavy domestic use with a highly textured, layered surface. Its abstract pattern mimics natural stone, offering both visual depth and tactile interest. Perfect for upholstery in earthy interiors seeking sculptural softness and rugged refinement.

Keywords: Performance-grade, polyester, textured, natural stone, upholstery.

Article Reference	Rhea 3186			
No. of Colors	01			
Width (+/-)	140 cms			
Repeat (+/-)	Vertical	N/A cm	Horizontal	N/A
Composition	100% Polyester			
Weight (+/-)	410 g/m ²			
Abrasion Resistance	+30,000 Martindale			
Usage	Decorative, Upholstery			
Care Instructions				



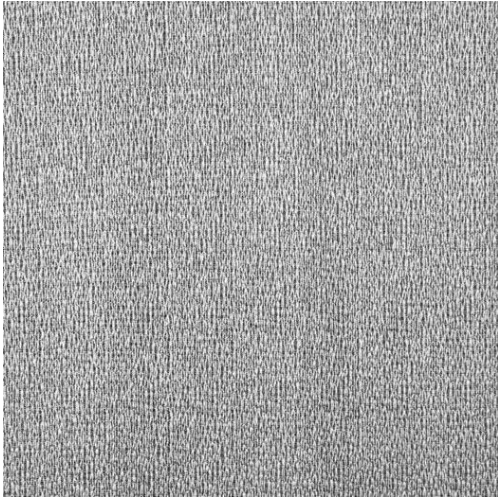
TERESA

A soft drift of texture and glow

TERESA is a sheer jacquard crafted in yarn-dyed polyester, designed to softly filter light through a netted, semi-transparent construction. Its open weave introduces quiet texture to windows and partitions. Ideal for layered panels or breezy curtains, TERESA brings a touch of airiness to calm, earth-toned interiors.

Keywords: Sheer, jacquard, yarn-dyed, semi-transparent, open weave, breezy curtains.

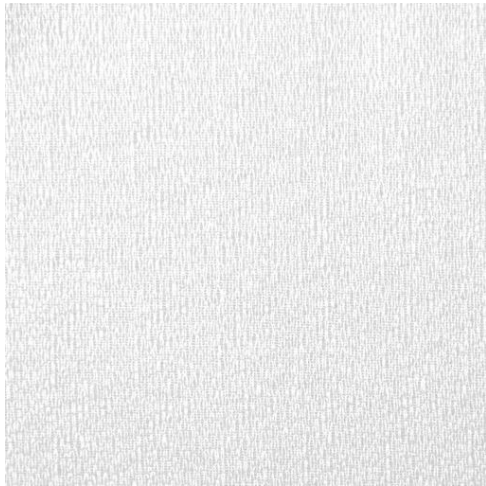
Article Reference	Teresa 3187			
No. of Colors	03			
AWidth (+/-)	290 cms \updownarrow			
Repeat (+/-)	Vertical	3.75 cm	Horizontal	4.5 cm
Composition	100% Polyester			
Weight (+/-)	190 g/m ²			
Abrasion Resistance	N/A			
Usage	Drapery			
Care Instructions				



3187/01



3187/02



3187/03

**ZEM****Textures that echo the terrains**

ZEM combines satin and plain jacquard weaves in a refined large-scale diamond layout. This decorative fabric's pattern evokes soft terrain shifts, making it an excellent choice for drapery or cushions in nature-inspired interiors that celebrate layered textures and quiet movement.

Keywords: Satin, jacquard, plain weave, large-scale, soft terrain, drapery, cushions.

Article Reference	Zem 3188			
No. of Colors	01			
Width (+/-)	140 cms			
Repeat (+/-)	Vertical	60 cm	Horizontal	69.5 cm
Composition	36% Nylon, 12% Linen, 52% Viscose			
Weight (+/-)	225 g/m ²			
Abrasion Resistance	+60,000 Martindale			
Usage	Decorative			
Care Instructions				



DEMETER

A soft reflection of timeworn wood

DEMETER is a jacquard fabric woven with a blend of yarn-dyed polyester and zari, creating a surface that shimmers subtly. Its abstract stripe design resembles weathered bark, making it ideal for curtains or cushions. DEMETER enriches earthy interiors with a sense of natural erosion and quiet luxury.

Keywords: Jacquard, yarn-dyed, polyester, zari, shimmer, abstract, stripe, weathered bark.

Article Reference	Demeter 3189			
No. of Colors	01			
Width (+/-)	140 cms			
Repeat (+/-)	Vertical	36.5 cm	Horizontal	36 cm
Composition	86% Polyester, 14% Zari			
Weight (+/-)	204 g/m ²			
Abrasion Resistance	N/A			
Usage	Decorative			
Care Instructions				



MEDINI

Layered lines inspired by elemental rhythm

MEDINI is a decorative jacquard combining yarn and piece-dyeing across a nylon, polyester, and linen blend. Its surface is defined by geometric lines crafted with special yarns that create visual layering. A perfect fit for refined cushions or drapes in interiors celebrating balance, precision, and natural tones.

Keywords: Jacquard, yarn dyeing, piece- dyeing, nylon-poly-linen blend, geometric lines, decorative.

Article Reference	Medini 3190			
No. of Colors	01			
Width (+/-)	140 cms			
Repeat (+/-)	Vertical	69 cm	Horizontal	69.5 cm
Composition	27% Nylon, 44% Polyester, 9% Linen, 20% Viscose			
Weight (+/-)	300 g/m ²			
Abrasion Resistance	+40,000 Martindale			
Usage	Decorative			
Care Instructions				



Lines and light of desert arches

AFRA is a jacquard fabric that features a mural-like composition of structured motifs. Its subtle grid feels familiar and comforting, ideal for cushions or decorative panels. With a pattern that suggests framed artistry, AFRA anchors natural interiors with warmth and grace.

Keywords: Jacquard, mural-like, structured, decorative, cushions, framed artistry, desert.

Article Reference	Afra 3191			
No. of Colors	01			
Width (+/-)	140 cms			
Repeat (+/-)	Vertical	30 cm	Horizontal	35 cm
Composition	36% Nylon, 52% Viscose, 12% Linen			
Weight (+/-)	225 g/m ²			
Abrasion Resistance	+15,000 Martindale			
Usage	Decorative			
Care Instructions				



SIERRA

The bold movement of rolling hills

SIERRA is a cotton-polyester jacquard, designed for decorative and general domestic use. Its dynamic pattern of zigzags and curving geometries mimics the contours of rugged hills. Ideal for cushions, light upholstery, or drapery in rustic interiors seeking bold organic movement.

Keywords: Cotton-polyester, jacquard, decorative, zigzag, curving geometry, rugged hills.

Article Reference	Sierra 3192			
No. of Colors	01			
Width (+/-)	140 cms			
Repeat (+/-)	Vertical	23.5 cm	Horizontal	34.5 cm
Composition	31% Cotton, 69% Polyester			
Weight (+/-)	570 g/m ²			
Abrasion Resistance	+20,000 Martindale			
Usage	Decorative			
Care Instructions				



ERSA

The artful dance of woven currents

ERSA features intricate embroidery on a dobby-woven fabric in a polyester-cotton blend, adding rich texture and artistic detail to its design. The surface ripples with zigzag lines that flow like gentle water currents. Ideal for curtains or cushions, ERSA lends a handcrafted, fluid motion to interiors inspired by earthy calm and movement.

Keywords: Embroidery, dobby, polyester- cotton, ripples, zig-zag lines, water currents, fluid.

Article Reference	Ersa 3193			
No. of Colors	01			
Width (+/-)	140 cms			
Repeat (+/-)	Vertical	9.5 cm	Horizontal	12.5 cm
Composition	57% Cotton, 43% Polyester			
Weight (+/-)	395 g/m ²			
Abrasion Resistance	+55,000 Martindale			
Usage	Decorative			
Care Instructions				



The song of fields in flowy Lines

KHET is a jacquard woven with yarn-dyed threads in a cotton-polyester blend, designed to bring decorative elegance to interiors. Its abstract pattern, resembling the intricate lines of fields viewed from above, flows like calligraphic strokes creating a sense of dynamic movement. Ideal for cushions or soft accents, KHET infuses spaces with the beauty of natural geometry and the fluidity of open landscapes.

Keywords: Jacquard, yarn-dyed, cotton- polyester, abstract, fields, calligraphic strokes, soft accents, cushions.

Article Reference	Khet 3194			
No. of Colors	01			
Width (+/-)	140 cms			
Repeat (+/-)	Vertical	45.5 cm	Horizontal	35 cm
Composition	22% Polyester, 78% Cotton			
Weight (+/-)	555 g/m ²			
Abrasion Resistance	+10,000 Martindale			
Usage	Decorative			
Care Instructions				



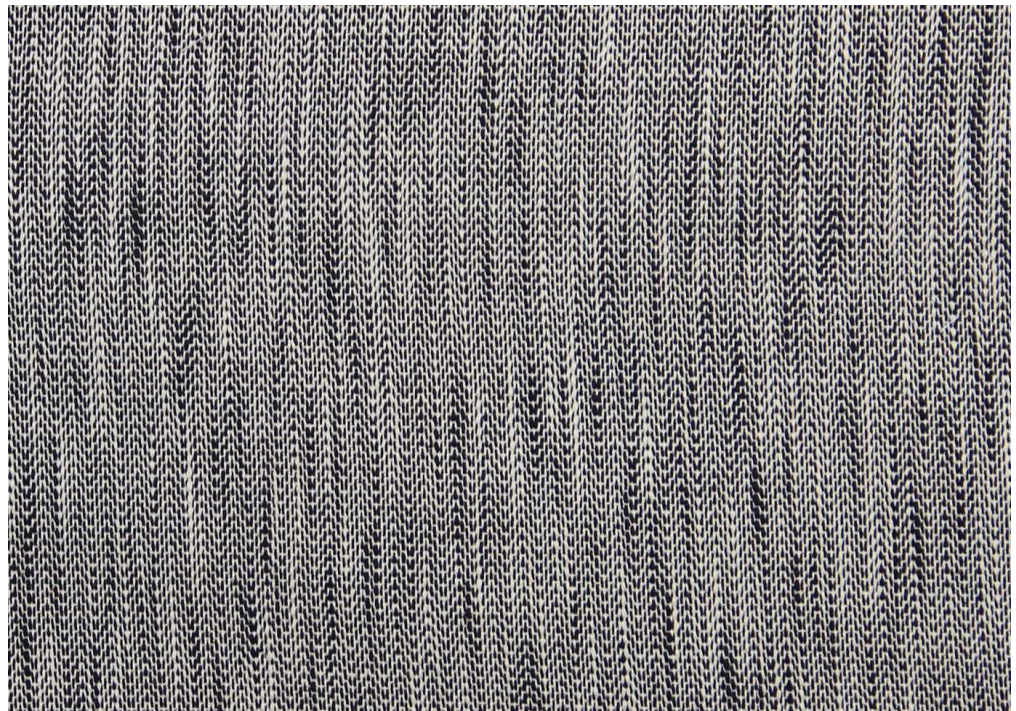
DAICHI

Calming rhythm of organic curves

DAICHI is a jacquard textile with a satin base, crafted from a complex yarn- and piece-dyed fiber blend for strength and beauty. The fabric’s curving botanical pattern delivers elegance and calm. Suitable for upholstery or decorative pieces, it layers softness into interiors echoing natural growth and serenity.

Keywords: Jacquard, satin, complex, yarn and piece dyed, botanical pattern, upholstery, decorative.

Article Reference	Daichi 3195			
No. of Colors	01			
Width (+/-)	140 cms			
Repeat (+/-)	Vertical	78 cm	Horizontal	69.5 cm
Composition	22% Nylon, 48% Cotton, 30% Viscose			
Weight (+/-)	370 g/m ²			
Abrasion Resistance	+30,000 Martindale			
Usage	Decorative, Upholstery			
Care Instructions				



BHOOMI

Natural comfort translated in soft tie dye look.

BHOOMI is a 100% cotton jacquard that uses yarn-dyed slubbed yarns to form a soft tie-dye illusion across the surface. With a breathable hand and relaxed pattern, it's well suited for cushions, panels or soft furnishings. Its handcrafted look complements interior palettes grounded in tradition and comfort.

Keywords: 100% Cotton, jacquard, slub yarn, soft tie -dye effect, breathable, relaxed.

Article Reference	Bhoomi 3196			
No. of Colors	01			
Width (+/-)	140 cms			
Repeat (+/-)	Vertical	< 1 cm	Horizontal	< 1 cm
Composition	100% Cotton			
Weight (+/-)	335 g/m ²			
Abrasion Resistance	+10,000 Martindale			
Usage	Decorative			
Care Instructions				



Japanese inspiration rendered in satin

AVNI features a satin dobby weave enriched with printed motifs inspired by Japanese shibori, layered with delicate embroidery. Crafted from a blend of natural and synthetic fibers, it's ideal for decorative applications like drapery or cushions. The pattern adds quiet artistry to interiors drawn to earthy refinement.

Keywords: Satin, dobby, printed, Shibori, embroidery, blend, decorative.

Article Reference	Avni 3197			
No. of Colors	01			
Width (+/-)	140 cms			
Repeat (+/-)	Vertical	15 cm	Horizontal	33 cm
Composition	93% Polyester, 7% Zari			
Weight (+/-)	325 g/m ²			
Abrasion Resistance	+10,000 Martindale			
Usage	Decorative			
Care Instructions				



LEIGH

The gentle movement of woven stripes

LEIGH is a 100% cotton dobby fabric with a matte base contrasted by soft, floating stripes across the surface. Designed for decorative use in cushions and curtains, its subtle motion suits interior spaces that embrace calm geometry and earthy softness.

Keywords: 100% Cotton, matte base, floating stripes, decorative, geometry.


Article Reference	Leigh 3198			
No. of Colors	01			
Width (+/-)	140 cms			
Repeat (+/-)	Vertical	N/A	Horizontal	9.5 cm
Composition	100% Cotton			
Weight (+/-)	445 g/m ²			
Abrasion Resistance	+10,000 Martindale			
Usage	Decorative			
Care Instructions				

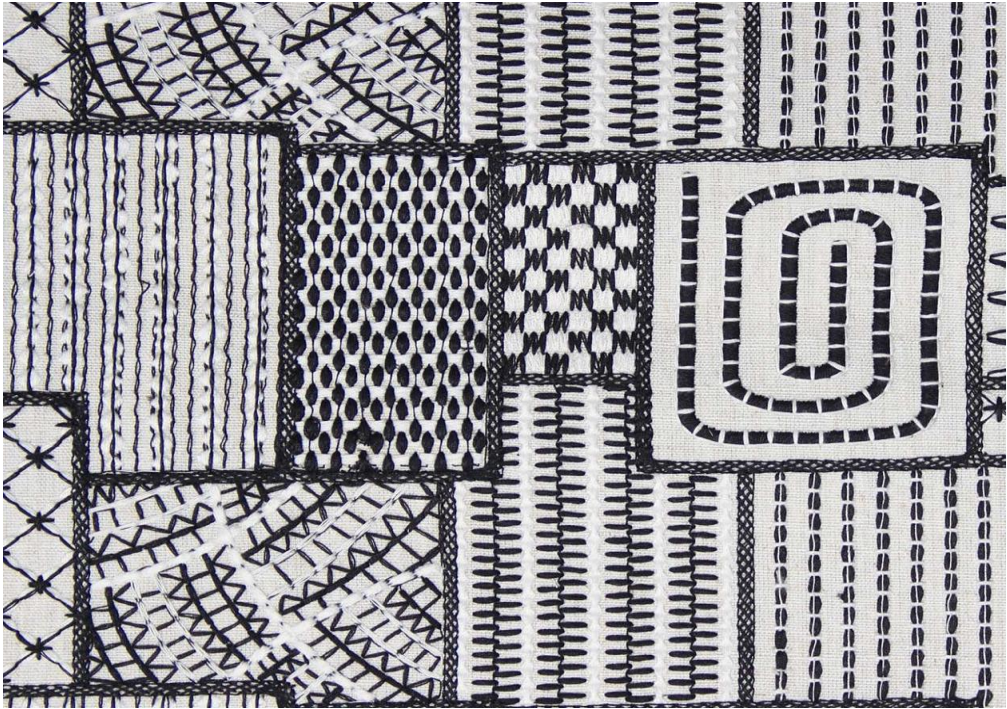


Refined rhythm of classic diamonds

NELA is a poly-cotton jacquard fabric designed for decorative applications such as cushions or soft furnishings. Its repeating diamond motifs add a refined geometric rhythm. The pattern brings a touch of classic elegance to interiors grounded in neutral, earthy palettes.

Keywords: Poly-cotton, jacquard, cushions, diamond, rhythm, grounded.

Article Reference	Nela 3199			
No. of Colors	01			
Width (+/-)	140 cms			
Repeat (+/-)	Vertical	16 cm	Horizontal	9 cm
Composition	27% Cotton, 73% Polyester			
Weight (+/-)	430 g/m ²			
Abrasion Resistance	+15,000 Martindale			
Usage	Decorative			
Care Instructions				



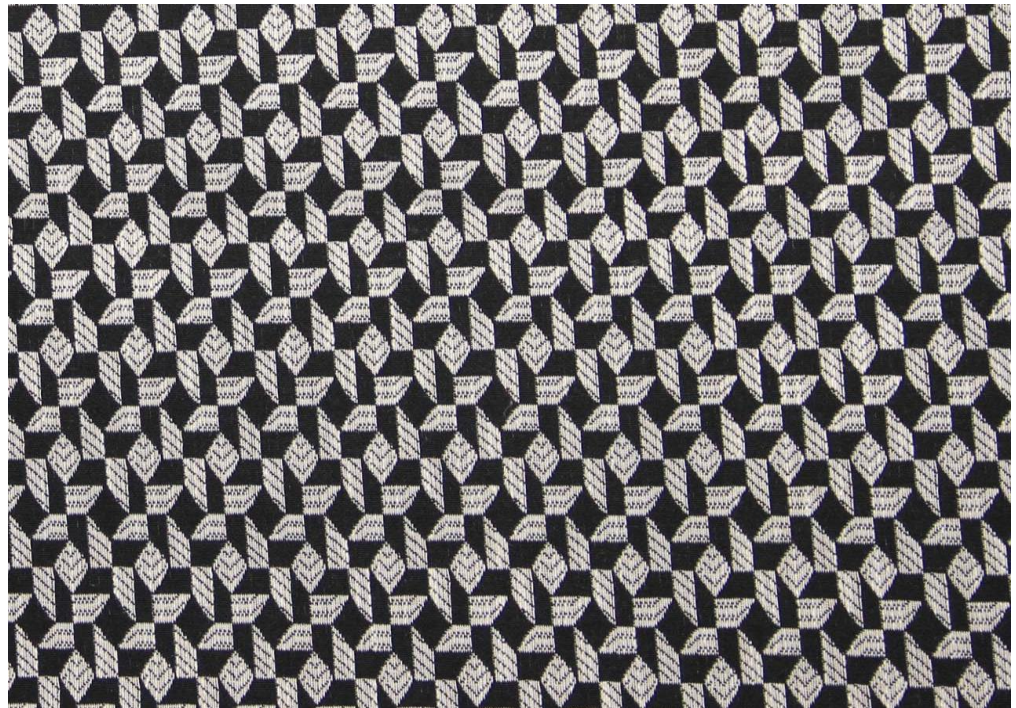
OMALA

Echoes of monochrome folk stories

OMALA features a monochrome folk embroidery on a dobby-woven base made from a polyester-cotton blend, softened through fabric washing. Suitable for drapery, panels, or cushions, the fabric’s pattern evokes cultural roots and quiet storytelling—perfect for rustic or globally inspired spaces with an earthy tone.

Keywords: Monochrome, folk-stories, embroidery, dobby base, blend, drapery, panels, cushions.

Article Reference	Omala 3200			
No. of Colors	01			
Width (+/-)	140 cms			
Repeat (+/-)	Vertical	18.5 cm	Horizontal	32 cm
Composition	94% Polyester, 6% Linen			
Weight (+/-)	655 g/m ²			
Abrasion Resistance	+25,000 Martindale			
Usage	Decorative			
Care Instructions				



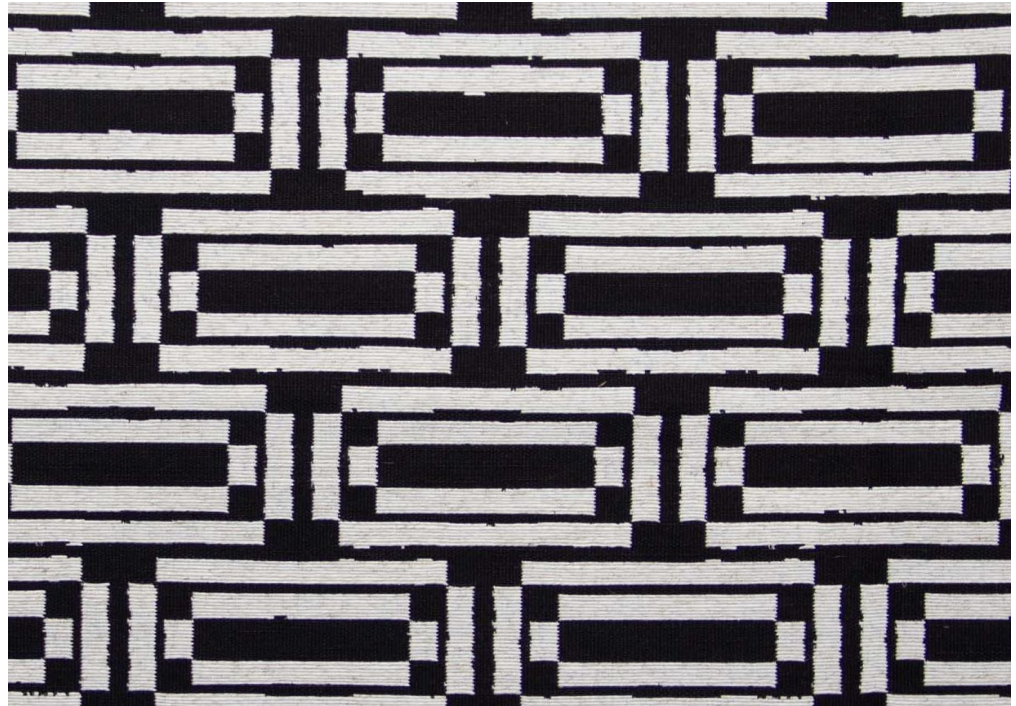
ACKER

Bold geometry for grounded interiors

ACKER is a heavy-duty jacquard woven with yarn-dyed threads in a polyester-linen blend. Designed for structured upholstery and decorative use, it features bold geometric motifs that lend form and clarity. The pattern supports interiors that value tactile structure within a natural, grounded design palette.

Keywords: Heavy duty, Jacquard, yarn-dyed, poly-linen blend, structured, upholstery, bold, geometric, form, clarity.

Article Reference	Acker 3201			
No. of Colors	01			
Width (+/-)	140 cms			
Repeat (+/-)	Vertical	4.5 cm	Horizontal	2.75 cm
Composition	95% Polyester, 5% Linen			
Weight (+/-)	420 g/m ²			
Abrasion Resistance	+55,000 Martindale			
Usage	Decorative, Upholstery			
Care Instructions				



EARTHA

Organic Restraint in Double-Cloth Weave

EARTHA is a double-cloth jacquard composed of polyester, cotton, and linen, made for durability in upholstery and decorative settings. Its tactile grid structure brings depth and balance to surfaces. With its grounding geometry, EARTHA supports interiors that embrace structure and organic restraint in equal measure.

Keywords: Double-cloth, jacquard, polyester, cotton, linen, durability, upholstery, decorative, tactile, grid.

Article Reference	Eartha 3202			
No. of Colors	01			
Width (+/-)	140 cms			
Repeat (+/-)	Vertical	12.5 cm	Horizontal	11.5 cm
Composition	58% Polyester, 38% Cotton, 4% Linen			
Weight (+/-)	520 g/m ²			
Abrasion Resistance	+30,000 Martindale			
Usage	Decorative, Upholstery			
Care Instructions				

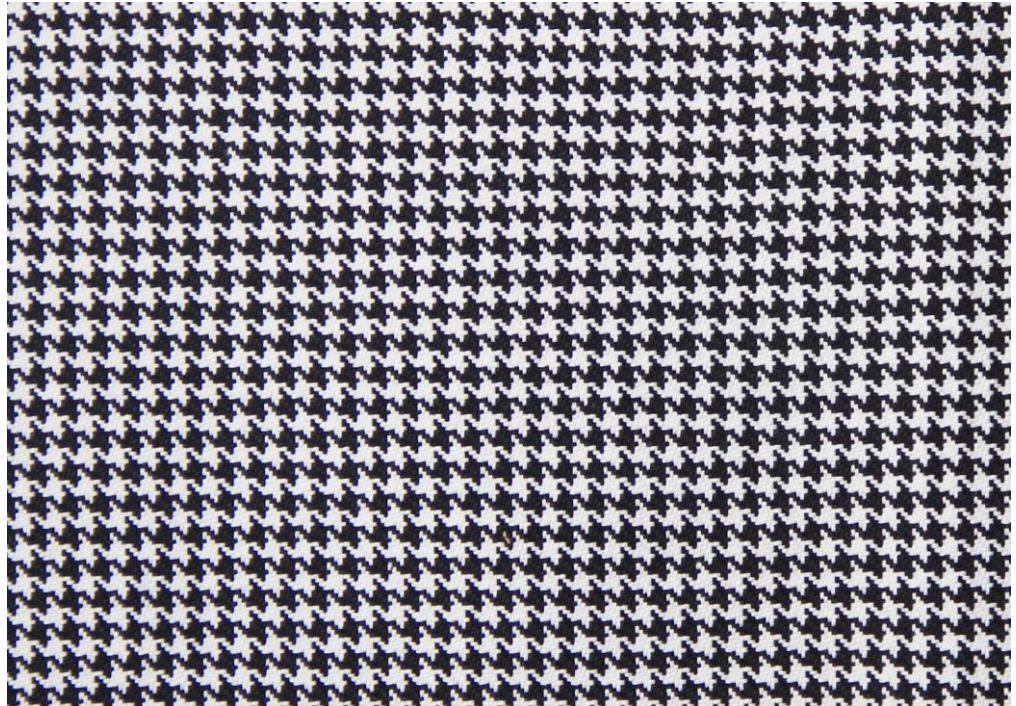


Waves in bold contrast

NUNA is a yarn-dyed jacquard woven from a polyester-cotton-linen mix. Designed for decorative use in drapery or cushions, its soft, pagoda-like waves create a peaceful rhythm. The pattern enhances interiors seeking quiet curvature and a touch of botanical softness within an earthy design scheme.

Keywords: Yarn-dyed, jacquard, polyester-cotton-linen, decorative, pagoda- like, waves.

Article Reference	Nuna 3203			
No. of Colors	01			
Width (+/-)	140 cms			
Repeat (+/-)	Vertical	2 cm	Horizontal	2 cm
Composition	48% Polyester, 47% Cotton, 5% Linen			
Weight (+/-)	450 g/m ²			
Abrasion Resistance	+15,000 Martindale			
Usage	Decorative			
Care Instructions				



ARTIK

Earthy Houndstooth in Cotton Weaves

ARTIK is a cotton jacquard featuring a reimagined houndstooth pattern with a softened, organic twist. Its natural composition and durable weave make it ideal for upholstery or structured cushions. This classic pattern grounds interiors with a refined, earthy presence.

Keywords: Cotton, jacquard, houndstooth, organic, natural composition, durable, upholstery, cushions.

Article Reference	Artik 3204			
No. of Colors	01			
Width (+/-)	140 cms			
Repeat (+/-)	Vertical	< 1 cm	Horizontal	< 1 cm
Composition	100% Cotton			
Weight (+/-)	400 g/m ²			
Abrasion Resistance	+60,000 Martindale			
Usage	Decorative, Upholstery			
Care Instructions				



LOKA

Calm Geometry in Balanced Weaves

LOKA is a jacquard fabric woven in a balanced, symmetrical design using yarn-dyed threads. Its calm geometry suits decorative applications like cushions or drapery. With its orderly rhythm, LOKA anchors interiors in serene, earth-toned symmetry.

Keywords: Jacquard, balanced, symmetrical, yarn-dyed, geometry, decorative.

Article Reference	Loka 3205			
No. of Colors	01			
Width (+/-)	140 cms			
Repeat (+/-)	Vertical	7.5 cm	Horizontal	3.5 cm
Composition	67% Polyester, 33% Cotton			
Weight (+/-)	580 g/m ²			
Abrasion Resistance	+25,000 Martindale			
Usage	Decorative			
Care Instructions				

VFM
DESIGN

www.vfm-design.com

For Enquiries:

Europe:

office@baumann.co.at

Middle East:

office@warpsandwefts.com

USA:

office@baumanndekorusa.com

India:

office@consilioresources.com