

VFM DESIGN

**EMOTIONS**

"A collection of contract grade basics, plains & textures"





# VFM DESIGN

# LAUNCH 1

ARTICLE NO	BOOK NO	PAGE NO
*BLISS 3001(Neutral Colors)	EMOTIONS 1	03
*BLISS 3001(Bright Colors)	EMOTIONS 2	03
GLORY 3010	EMOTIONS 5	04
RESOLVE 3011	EMOTIONS 5	04
NOBLE 3012	EMOTIONS 5	05
ZEAL 3013	EMOTIONS 5	05
HONOR 3014	EMOTIONS 5	07
BLESSING 3015	EMOTIONS 5	07
GALA 3026	EMOTIONS 5	09
EUPHORIA 3027	EMOTIONS 5	09

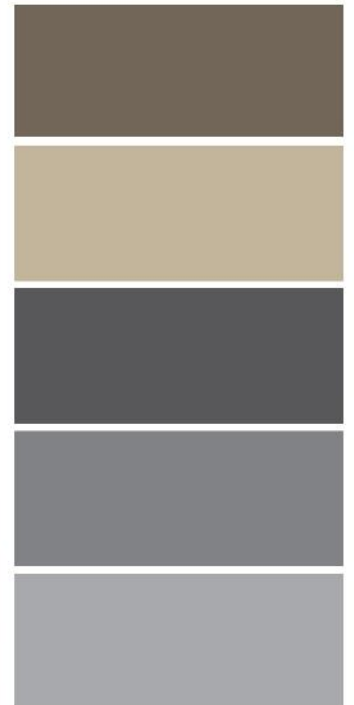
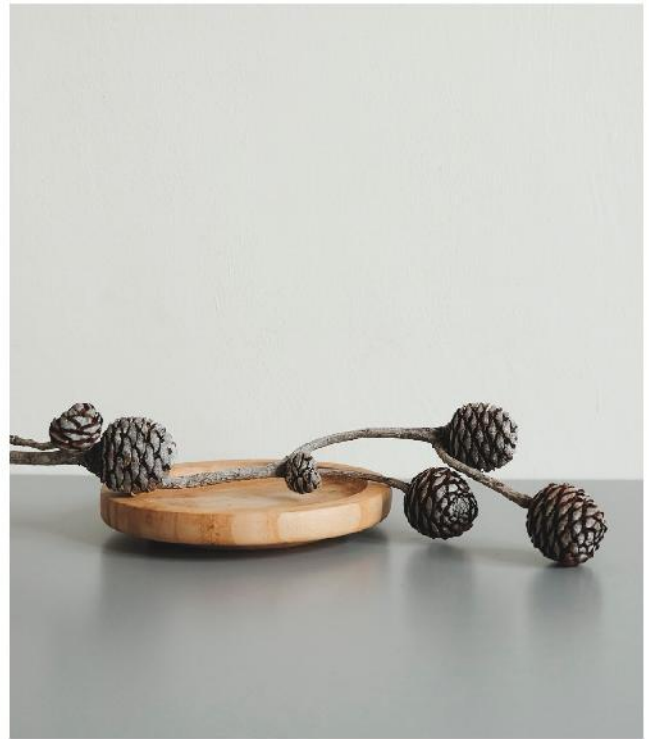
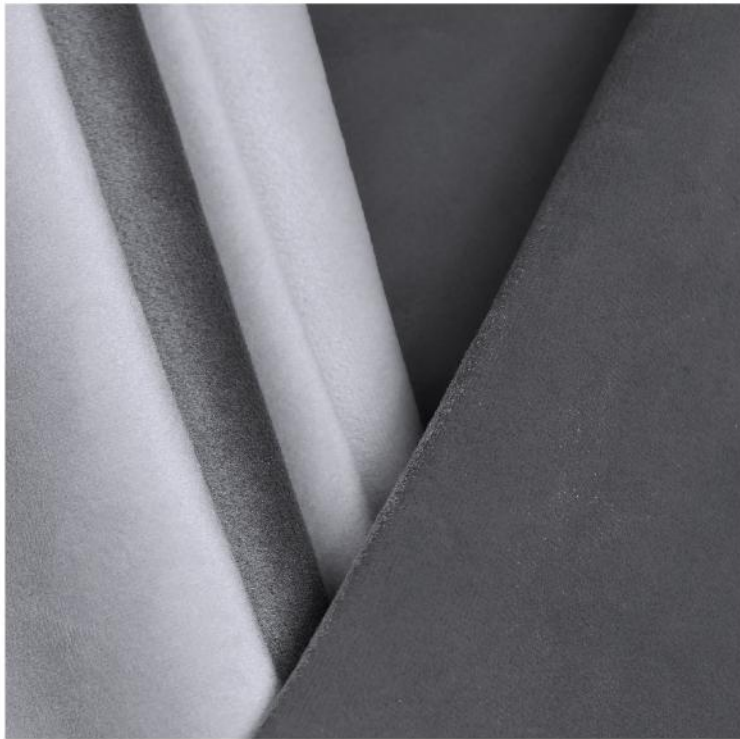
## \*PERFORMANCE FABRIC

**EASY TO CLEAN (No Chemical Treatment)**

**HIGH ABRASION RESISTANCE**

**FR COMPLIANT**

Our Performance Fabrics are super easy to clean and it is noteworthy that this property is not achieved with chemical stain repellent agents. Woven with special yarns, these fabrics further undergo a special softening to achieve inherent ease of cleaning. This allows for 'spot cleaning' of regular stains with water and mild soap or detergent. Additionally, these fabrics have high resistance to abrasion and pilling. They also meet basic FR standards for Upholstery fabrics.



VFM DESIGN



VFM DESIGN



A SPECTRUM OF LUXURY IN BLISSFUL COLORS

A smooth yet tough low pile knit velvet with a backing in a wide palette of 148 colors including neutrals and vibrant brights. A performance fabric- durable, and easy to care and clean.

Book: EMOTIONS 1

Neutral Colors

ARTICLE REFERENCE	Bliss 3001
AVAILABLE COLOURS	148 (Colors 1 to 75)
WIDTH	137 cm
REPEAT	H-0          V-0
COMPOSITION	100% Polyester
WEIGHT	360 g/m <sup>2</sup>
ABRASION RESISTANCE	+100,000 Wyzenbeek
FR STANDARD	TB117-2013 COMPLIANT
USAGE	Upholstery
CARE INSTRUCTION	<input checked="" type="checkbox"/> No Steam <input checked="" type="checkbox"/> Do Not Tumble Dry <input checked="" type="checkbox"/> Do Not Bleach <input checked="" type="checkbox"/> Professional Wet Clean

Note: MOQ for Special Color 300M

Book: EMOTIONS 2

Bright Colors

ARTICLE REFERENCE	Bliss 3001
AVAILABLE COLOURS	148 (Colors 76 to 148)
WIDTH	137 cm
REPEAT	H-0          V-0
COMPOSITION	100% Polyester
WEIGHT	360 g/m <sup>2</sup>
ABRASION RESISTANCE	+100,000 Wyzenbeek
FR STANDARD	TB117-2013 COMPLIANT
USAGE	Upholstery
CARE INSTRUCTION	<input checked="" type="checkbox"/> No Steam <input checked="" type="checkbox"/> Do Not Tumble Dry <input checked="" type="checkbox"/> Do Not Bleach <input checked="" type="checkbox"/> Professional Wet Clean

Note: MOQ for Special Color 300M

# GLORY 3010

VFM DESIGN



## A REGAL CHENILLE IN ITS FULL GLORY

A lightly back coated woven chenille that symbolizes the estimable mettle of a worthy textile in its full glory. The distinct two tone effect of chenille enhances its visual appeal.

### Book: EMOTIONS 5

ARTICLE REFERENCE	Glory 3010
AVAILABLE COLOURS	17
WIDTH	137 cm
REPEAT	H-0          V-0
COMPOSITION	100% Polyester
WEIGHT	380 g/m <sup>2</sup>
ABRASION RESISTANCE	+100,000 Wyzenbeek
FR STANDARD	TB117-2013 COMPLIANT
USAGE	Upholstery
CARE INSTRUCTION	<input checked="" type="checkbox"/> No Steam <input checked="" type="checkbox"/> Do Not Tumble Dry <input checked="" type="checkbox"/> Do Not Bleach <input checked="" type="checkbox"/> Professional Wet Clean

Note: MOQ for Special Color 300M

# RESOLVE 3011

VFM DESIGN



## TEXTURE WOVEN WITH A RESOLVE TO EXCEL

This woven texture with a non-woven backing, presents a simple and straightforward grainy surface creating a coarse rugged look that epitomizes a determined character.

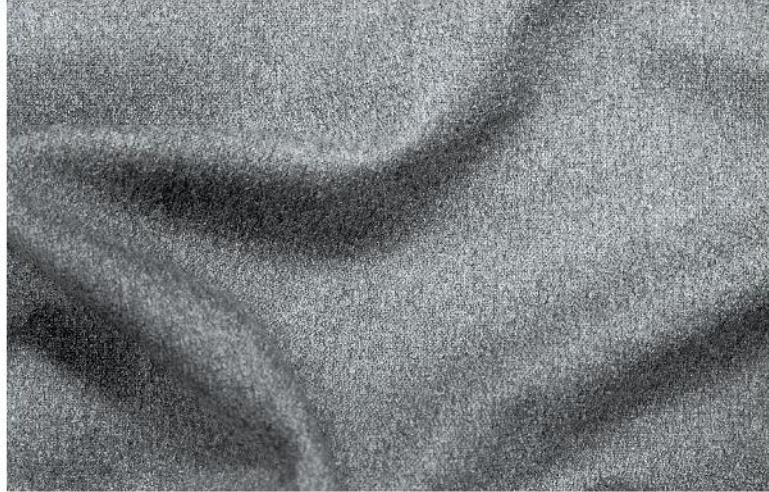
### Book: EMOTIONS 5

ARTICLE REFERENCE	Resolve 3011
AVAILABLE COLOURS	15
WIDTH	137 cm
REPEAT	H-0          V-0
COMPOSITION	100% Polyester
WEIGHT	360 g/m <sup>2</sup>
ABRASION RESISTANCE	+100,000 Wyzenbeek
FR STANDARD	TB117-2013 COMPLIANT
USAGE	Upholstery
CARE INSTRUCTION	<input checked="" type="checkbox"/> No Steam <input checked="" type="checkbox"/> Do Not Tumble Dry <input checked="" type="checkbox"/> Do Not Bleach <input checked="" type="checkbox"/> Professional Wet Clean

Note: MOQ for Special Color 300M

# NOBLE 3012

VFM DESIGN



## NOBILITY TURNED INTO A CLASSY TEXTILE

This plain weave with a backing comes in a 'class of its own' with a wool like surface that appears heavier than its easy and pliable structure.

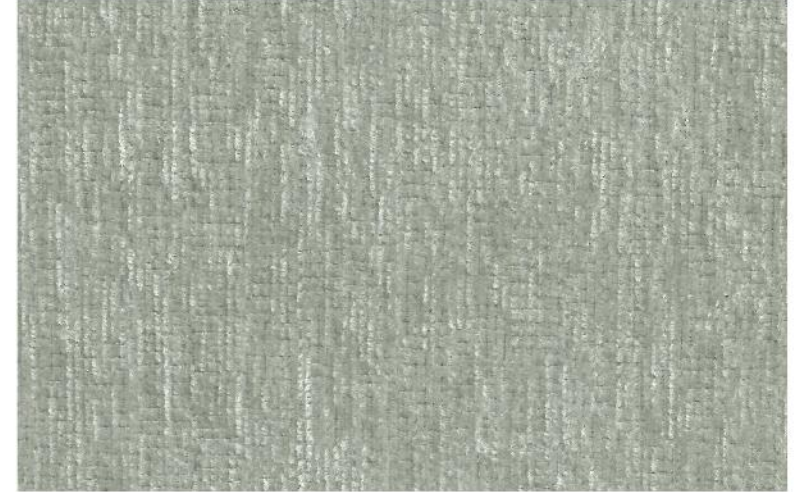
### Book: EMOTIONS 5

ARTICLE REFERENCE	Noble 3012
AVAILABLE COLOURS	2
WIDTH	137 cm
REPEAT	H-0          V-0
COMPOSITION	100% Polyester
WEIGHT	310 g/m <sup>2</sup>
ABRASION RESISTANCE	+15,000 Wyzenbeek
FR STANDARD	TB117-2013 COMPLIANT
USAGE	Upholstery
CARE INSTRUCTION	<input checked="" type="checkbox"/> No Steam <input checked="" type="checkbox"/> Do Not Tumble Dry <input checked="" type="checkbox"/> Do Not Bleach <input checked="" type="checkbox"/> Professional Wet Clean

Note: MOQ for Special Color 300M

# ZEAL 3013

VFM DESIGN



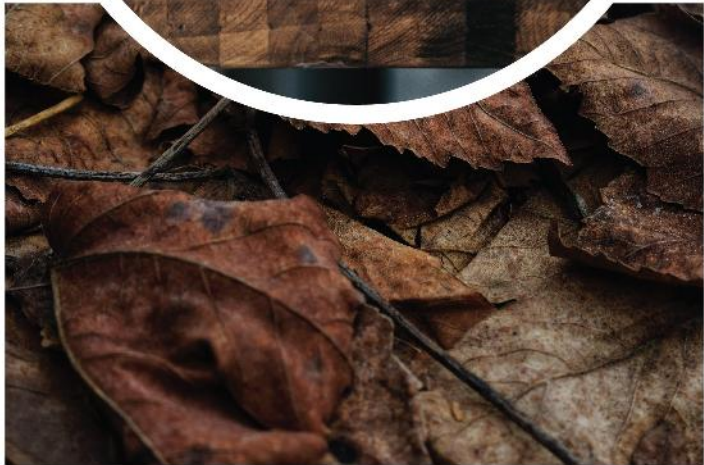
## WITH A FERVENT ZEAL TO APPEAL

A 'fit for all' quality that finds a home in any setting, this neutral beige colored woven texture easily blends with any colors, textures or patterns- be they small or bold, bright or pale.

### Book: EMOTIONS 5

ARTICLE REFERENCE	Zeal 3013
AVAILABLE COLOURS	1
WIDTH	137 cm
REPEAT	H-0          V-0
COMPOSITION	100% Polyester
WEIGHT	250 g/m <sup>2</sup>
ABRASION RESISTANCE	+12,000 Wyzenbeek
FR STANDARD	TB117-2013 COMPLIANT
USAGE	Upholstery
CARE INSTRUCTION	<input checked="" type="checkbox"/> No Steam <input checked="" type="checkbox"/> Do Not Tumble Dry <input checked="" type="checkbox"/> Do Not Bleach <input checked="" type="checkbox"/> Professional Wet Clean

Note: MOQ for Special Color 300M



# HONOR 3014

VFM DESIGN



## WHEN CHENILLE IS ABLE AND HONORABLE

A soft wooly look on a zigzag surface presentation, this heavy weight woven chenille is a sleek and durable option for commercial as well as residential use.

### Book: EMOTIONS 5

ARTICLE REFERENCE	Honor 3014
AVAILABLE COLOURS	8
WIDTH	137 cm
REPEAT	H-0.5cm(1/4")      V-9.5cm(3.3/4")
COMPOSITION	100% Polyester
WEIGHT	640 g/m <sup>2</sup>
ABRASION RESISTANCE	+100,000 Wyzenbeek
FR STANDARD	TB117-2013 COMPLIANT
USAGE	Upholstery
CARE INSTRUCTION	<input checked="" type="checkbox"/> No Steam <input checked="" type="checkbox"/> Do Not Tumble Dry <input checked="" type="checkbox"/> Do Not Bleach <input checked="" type="checkbox"/> Professional Wet Clean

Note: MOQ for Special Color 300M

# BLESSING 3015

VFM DESIGN



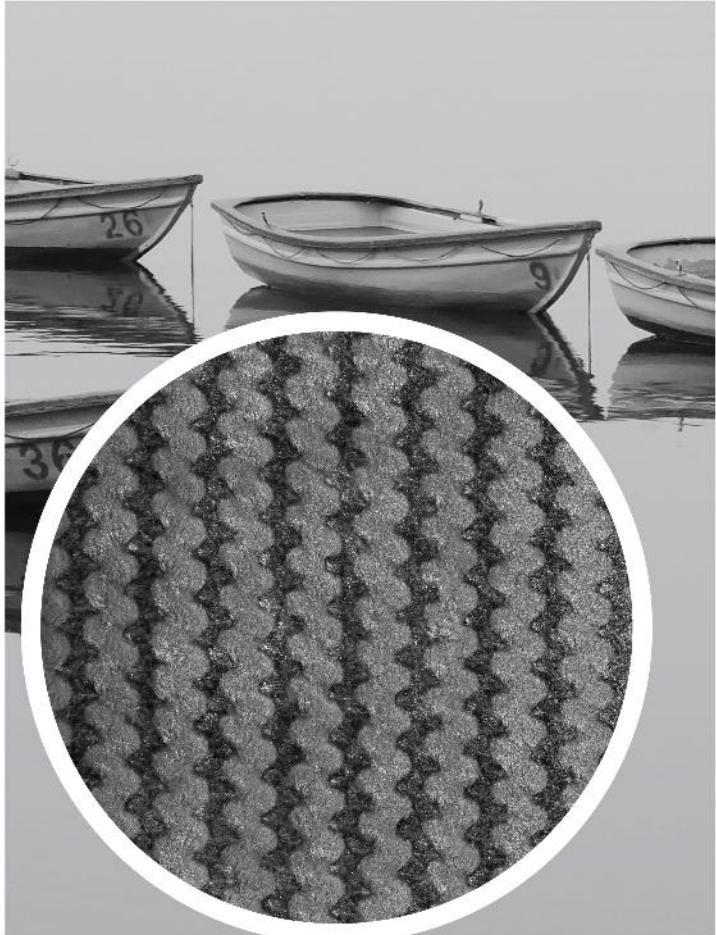
## AN UNDISGUISED BLESSING IN CHENILLE

A rugged looking back coated woven chenille with thick floats that seem to disappear intermittently creating an interesting irregular play of ups and downs.

### Book: EMOTIONS 5

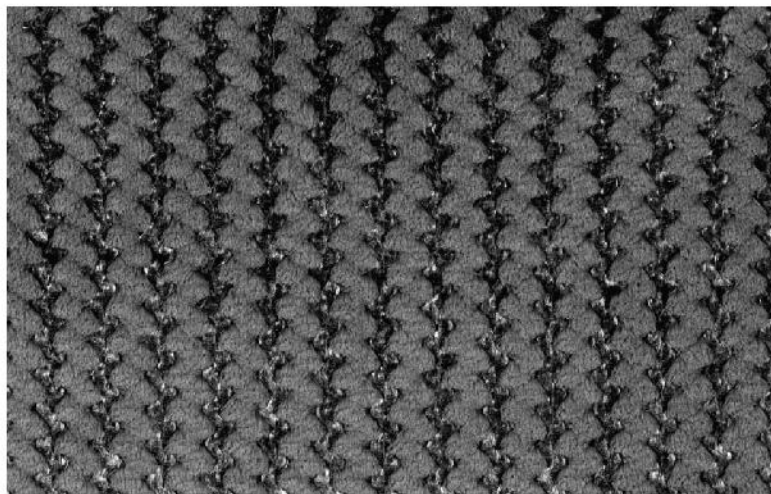
ARTICLE REFERENCE	Blessing 3015
AVAILABLE COLOURS	3
WIDTH	137 cm
REPEAT	H-0      V-0
COMPOSITION	100% Polyester
WEIGHT	370 g/m <sup>2</sup>
ABRASION RESISTANCE	+30,000 Wyzenbeek
FR STANDARD	TB117-2013 COMPLIANT
USAGE	Upholstery
CARE INSTRUCTION	<input checked="" type="checkbox"/> No Steam <input checked="" type="checkbox"/> Do Not Tumble Dry <input checked="" type="checkbox"/> Do Not Bleach <input checked="" type="checkbox"/> Professional Wet Clean

Note: MOQ for Special Color 300M



## GALA 3026

VFM DESIGN



### A GALA CELEBRATION OF LAVISH COMFORT

A lavish high pile knit velvet with backing, this fabric entices with its curvaceous snaky pattern arising softly in relief from a slightly shiny lower pile ground.

#### Book: EMOTIONS 5

ARTICLE REFERENCE	Gala 3026
AVAILABLE COLOURS	7
WIDTH	137 cm
REPEAT	H-2.5cm(1") V-1.4cm(1/2")
COMPOSITION	100% Polyester
WEIGHT	386 g/m <sup>2</sup>
ABRASION RESISTANCE	+100,000 Wyzenbeek
FR STANDARD	TB117-2013 COMPLIANT
USAGE	Upholstery
CARE INSTRUCTION	<input checked="" type="checkbox"/> No Steam <input checked="" type="checkbox"/> Do Not Tumble Dry <input checked="" type="checkbox"/> Do Not Bleach <input checked="" type="checkbox"/> Professional Wet Clean

Note: MOQ for Special Color 300M

## EUPHORIA 3027

VFM DESIGN



### A EUPHORIC FEEL OF LUSH AND PLUSH

Inviting to look, touch and feel, this high pile knit velvet sets a new standard of uber luxury and plush style with its impressive faux fur surface emulation.

#### Book: EMOTIONS 5

ARTICLE REFERENCE	Euphoria 3027
AVAILABLE COLOURS	9
WIDTH	137 cm
REPEAT	H-0 V-0
COMPOSITION	100% Polyester
WEIGHT	350 g/m <sup>2</sup>
ABRASION RESISTANCE	+100,000 Wyzenbeek
FR STANDARD	TB117-2013 COMPLIANT
USAGE	Upholstery
CARE INSTRUCTION	<input checked="" type="checkbox"/> No Steam <input checked="" type="checkbox"/> Do Not Tumble Dry <input checked="" type="checkbox"/> Do Not Bleach <input checked="" type="checkbox"/> Professional Wet Clean

Note: MOQ for Special Color 300M





# VFM DESIGN

# LAUNCH 2

ARTICLE NO	BOOK NO	PAGE NO
*PRIDE 3016	EMOTIONS 6	12
MODEST 3017	EMOTIONS 6	12
SERENITY 3018	EMOTIONS 6	13
GRACE 3019	EMOTIONS 6	13
SIMPLICITY 3020	EMOTIONS 6	14
LIVELY 3021	EMOTIONS 6	14
WONDER 3022	EMOTIONS 6	15
DIGNITY 3023	EMOTIONS 6	15
MIRTH 3024	EMOTIONS 6	16
PEACE 3025	EMOTIONS 6	16

## \*PERFORMANCE FABRIC

**EASY TO CLEAN (No Chemical Treatment)**

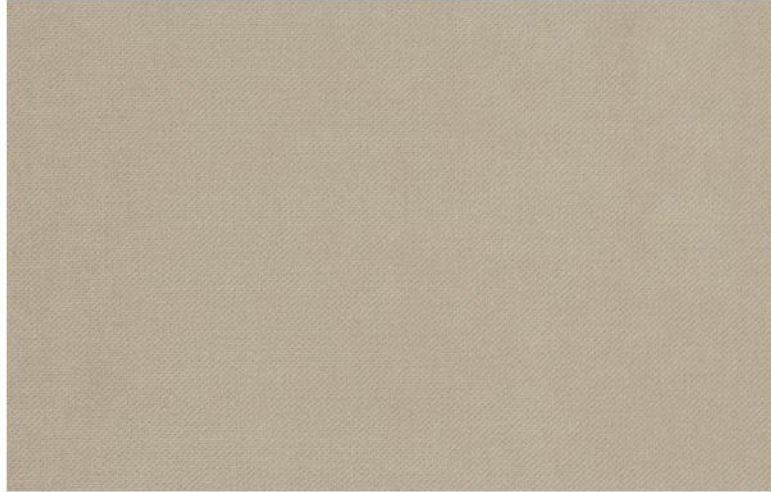
**HIGH ABRASION RESISTANCE**

**FR COMPLIANT**

Our Performance Fabrics are super easy to clean and it is noteworthy that this property is not achieved with chemical stain repellent agents. Woven with special yarns, these fabrics further undergo a special softening to achieve inherent ease of cleaning. This allows for 'spot cleaning' of regular stains with water and mild soap or detergent. Additionally, these fabrics have high resistance to abrasion and pilling. They also meet basic FR standards for Upholstery fabrics.

# PRIDE 3016

VFM DESIGN



### SUPERIOR PERFORMANCE TO BE PROUD OF

A 'no nonsense' knit velvet with a backing, revealing a diagonal 'almost invisible' regular hatch on the surface that captivates with its soft charm. A performance fabric- durable, and easy to care and clean.

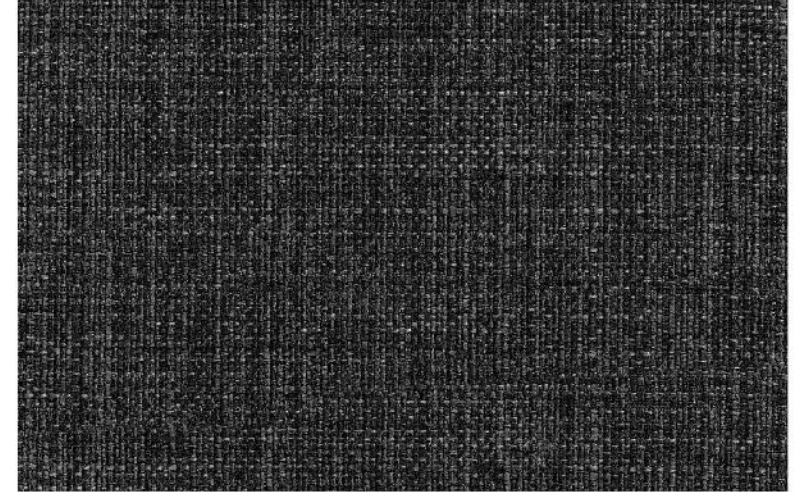
### Book: EMOTIONS 6

ARTICLE REFERENCE	Pride 3016
AVAILABLE COLOURS	8
WIDTH	137 cm
REPEAT	H-0          V-0
COMPOSITION	100% Polyester
WEIGHT	350 g/m <sup>2</sup>
ABRASION RESISTANCE	+66,000 Wyzenbeek
FR STANDARD	TB117-2013 COMPLIANT
USAGE	Upholstery
CARE INSTRUCTION	<input checked="" type="checkbox"/> No Steam <input checked="" type="checkbox"/> Do Not Tumble Dry <input checked="" type="checkbox"/> Do Not Bleach <input checked="" type="checkbox"/> Professional Wet Clean

Note: MOQ for Special Color 300M

# MODEST 3017

VFM DESIGN



### DOWN TO EARTH WITH ITS QUIET MODESTY

True to its name this woven texture with a backing imparts a subtle two tone effect of dotted lines crossing each other on a hard wearing surface.

### Book: EMOTIONS 6

ARTICLE REFERENCE	Modest 3017
AVAILABLE COLOURS	6
WIDTH	137 cm
REPEAT	H-0          V-0
COMPOSITION	100% Polyester
WEIGHT	340 g/m <sup>2</sup>
ABRASION RESISTANCE	+100,000 Wyzenbeek
FR STANDARD	TB117-2013 COMPLIANT
USAGE	Upholstery
CARE INSTRUCTION	<input checked="" type="checkbox"/> No Steam <input checked="" type="checkbox"/> Do Not Tumble Dry <input checked="" type="checkbox"/> Do Not Bleach <input checked="" type="checkbox"/> Professional Wet Clean

Note: MOQ for Special Color 300M

## SERENITY 3018

VFM DESIGN



### CREATING A PEACEFUL SERENE AMBIENCE

The serene blue of this light weight but hardwearing woven texture appears as a mild drizzle that delights with its charismatic blend of texture and tones.

#### Book: EMOTIONS 6

ARTICLE REFERENCE	Serenity 3018
AVAILABLE COLOURS	1
WIDTH	137 cm
REPEAT	H-0          V-0
COMPOSITION	100% Polyester
WEIGHT	275 g/m <sup>2</sup>
ABRASION RESISTANCE	+100,000 Wyzenbeek
FR STANDARD	TB117-2013 COMPLIANT
USAGE	Upholstery
CARE INSTRUCTION	<input checked="" type="checkbox"/> No Steam <input checked="" type="checkbox"/> Do Not Tumble Dry <input checked="" type="checkbox"/> Do Not Bleach <input checked="" type="checkbox"/> Professional Wet Clean

Note: MOQ for Special Color 300M

## GRACE 3019

VFM DESIGN



### BEAUTY AND GRACE, HAND IN HAND

A woven texture with a non-woven backing, this fabric imparts an elegant and stylish touch to the design ambience with its two tone grainy appearance.

#### Book: EMOTIONS 6

ARTICLE REFERENCE	Grace 3019
AVAILABLE COLOURS	19
WIDTH	137 cm
REPEAT	H-0          V-0
COMPOSITION	100% Polyester
WEIGHT	380 g/m <sup>2</sup>
ABRASION RESISTANCE	+15000 Wyzenbeek
FR STANDARD	TB117-2013 COMPLIANT
USAGE	Upholstery
CARE INSTRUCTION	<input checked="" type="checkbox"/> No Steam <input checked="" type="checkbox"/> Do Not Tumble Dry <input checked="" type="checkbox"/> Do Not Bleach <input checked="" type="checkbox"/> Professional Wet Clean

Note: MOQ for Special Color 300M

## SIMPLICITY 3020

VFM DESIGN



### WHEN SIMPLE IS SMART AND SLEEK

As simple as simple can get, this minimalistic woven texture exemplifies the concept of less is more. The linen and polyester blend imparts an organic look and a 'feel good' factor.

#### Book: EMOTIONS 6

ARTICLE REFERENCE	Simplicity 3020
AVAILABLE COLOURS	14
WIDTH	137 cm
REPEAT	H-0          V-0
COMPOSITION	82% Polyester, 18% Linen
WEIGHT	375 g/m <sup>2</sup>
ABRASION RESISTANCE	+100,000 Wyzenbeek
FR STANDARD	TB117-2013 COMPLIANT
USAGE	Upholstery
CARE INSTRUCTION	<input checked="" type="checkbox"/> No Steam <input checked="" type="checkbox"/> Do Not Tumble Dry <input checked="" type="checkbox"/> Do Not Bleach <input checked="" type="checkbox"/> Professional Wet Clean

Note: MOQ for Special Color 300M

## LIVELY 3021

VFM DESIGN



### EXUBERANT LIVELINESS BROUGHT TO LIFE

A woven texture with knit backing, this dynamic textile draws attention with slight variation in the thickness of the floats that recreate a new impression with every glance.

#### Book: EMOTIONS 6

ARTICLE REFERENCE	Lively 3021
AVAILABLE COLOURS	21
WIDTH	137 cm
REPEAT	H-0          V-0
COMPOSITION	100% Polyester
WEIGHT	385 g/m <sup>2</sup>
ABRASION RESISTANCE	+100,000 Wyzenbeek
FR STANDARD	TB117-2013 COMPLIANT
USAGE	Upholstery
CARE INSTRUCTION	<input checked="" type="checkbox"/> No Steam <input checked="" type="checkbox"/> Do Not Tumble Dry <input checked="" type="checkbox"/> Do Not Bleach <input checked="" type="checkbox"/> Professional Wet Clean

Note: MOQ for Special Color 300M

## WONDER 3022

VFM DESIGN



### A WONDERFUL DESIGN TO BEHOLD

With a coarse grainy look that belies a soft hand, this back coated woven texture appears to have an organic composition despite its longevity and ease of care.

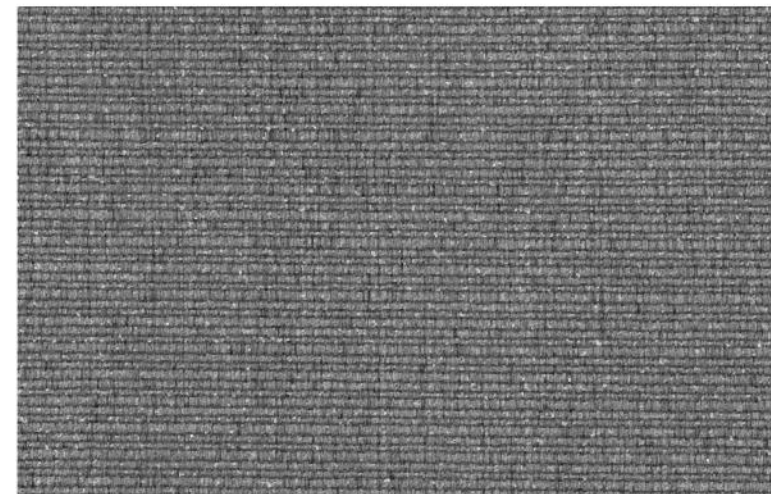
#### Book: EMOTIONS 6

ARTICLE REFERENCE	Wonder 3022
AVAILABLE COLOURS	4
WIDTH	137 cm
REPEAT	H-0          V-0
COMPOSITION	100% Polyester
WEIGHT	350 g/m <sup>2</sup>
ABRASION RESISTANCE	+100,000 Wyzenbeek
FR STANDARD	TB117-2013 COMPLIANT
USAGE	Upholstery
CARE INSTRUCTION	<input checked="" type="checkbox"/> No Steam <input checked="" type="checkbox"/> Do Not Tumble Dry <input checked="" type="checkbox"/> Do Not Bleach <input checked="" type="checkbox"/> Professional Wet Clean

Note: MOQ for Special Color 300M

## DIGNITY 3023

VFM DESIGN



### DIGNIFIED WITH A NATURAL LOOK AND FEEL

The imposing slub, organic appearance and handwoven appeal of this back coated woven texture is an outcome of the blend of natural and synthetic yarns.

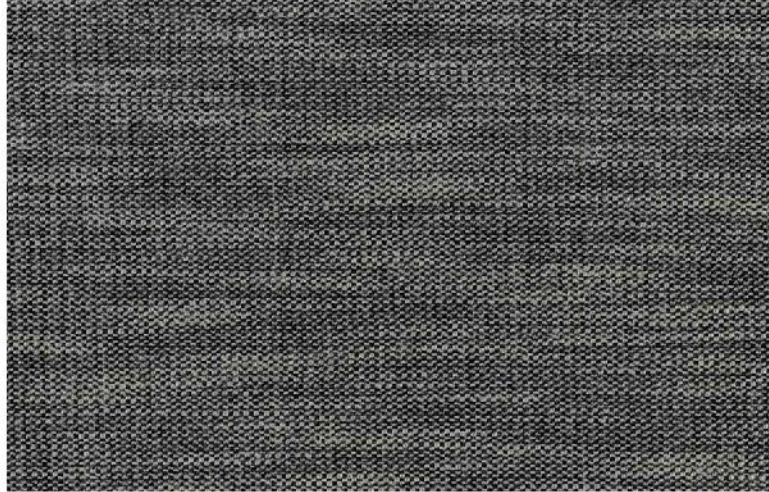
#### Book: EMOTIONS 6

ARTICLE REFERENCE	Dignity 3023
AVAILABLE COLOURS	17
WIDTH	137 cm
REPEAT	H-0          V-0
COMPOSITION	96% Polyester, 2% Rayon, 2% Linen
WEIGHT	417 g/m <sup>2</sup>
ABRASION RESISTANCE	+100,000 Wyzenbeek
FR STANDARD	TB117-2013 COMPLIANT
USAGE	Upholstery
CARE INSTRUCTION	<input checked="" type="checkbox"/> No Steam <input checked="" type="checkbox"/> Do Not Tumble Dry <input checked="" type="checkbox"/> Do Not Bleach <input checked="" type="checkbox"/> Professional Wet Clean

Note: MOQ for Special Color 300M

# MIRTH 3024

VFM DESIGN



## CREATING JOY AND MIRTH WITH STYLE

A vivacious coarsely woven texture with a light back coating, the charm of this dual tone fabric is bound to enhance the style quotient of any designed setting.

### Book: EMOTIONS 6

ARTICLE REFERENCE	Mirth 3024
AVAILABLE COLOURS	15
WIDTH	137 cm
REPEAT	H-0          V-0
COMPOSITION	100% Polyester
WEIGHT	490 g/m <sup>2</sup>
ABRASION RESISTANCE	+100,000 Wyzenbeek
FR STANDARD	TB117-2013 COMPLIANT
USAGE	Upholstery
CARE INSTRUCTION	<input checked="" type="checkbox"/> No Steam <input checked="" type="checkbox"/> Do Not Tumble Dry <input checked="" type="checkbox"/> Do Not Bleach <input checked="" type="checkbox"/> Professional Wet Clean

Note: MOQ for Special Color 300M

# PEACE 3025

VFM DESIGN



## A TEXTURE IN PEACEFUL HARMONY

A slubby woven texture with a non-woven backing, this textile is at peace with itself and its surrounds with a subdued but sophisticated and commanding presence.

### Book: EMOTIONS 6

ARTICLE REFERENCE	Peace 3025
AVAILABLE COLOURS	11
WIDTH	137 cm
REPEAT	H-0          V-0
COMPOSITION	100% Polyester
WEIGHT	360 g/m <sup>2</sup>
ABRASION RESISTANCE	+100,000 Wyzenbeek
FR STANDARD	TB117-2013 COMPLIANT
USAGE	Upholstery
CARE INSTRUCTION	<input checked="" type="checkbox"/> No Steam <input checked="" type="checkbox"/> Do Not Tumble Dry <input checked="" type="checkbox"/> Do Not Bleach <input checked="" type="checkbox"/> Professional Wet Clean

Note: MOQ for Special Color 300M



# VFM DESIGN

## LAUNCH 3

ARTICLE NO	BOOK NO	PAGE NO
*FAITH 3002	EMOTIONS 3	19
*DESIRE 3003	EMOTIONS 3	19
*DELIGHT 3004	EMOTIONS 3	21
GLEE 3005	EMOTIONS 4	23
FREEDOM 3006	EMOTIONS 4	23
*MARVEL 3007	EMOTIONS 4	24
PASSION 3008	EMOTIONS 4	24
DELECTA 3009	EMOTIONS 4	25

### \*PERFORMANCE FABRIC

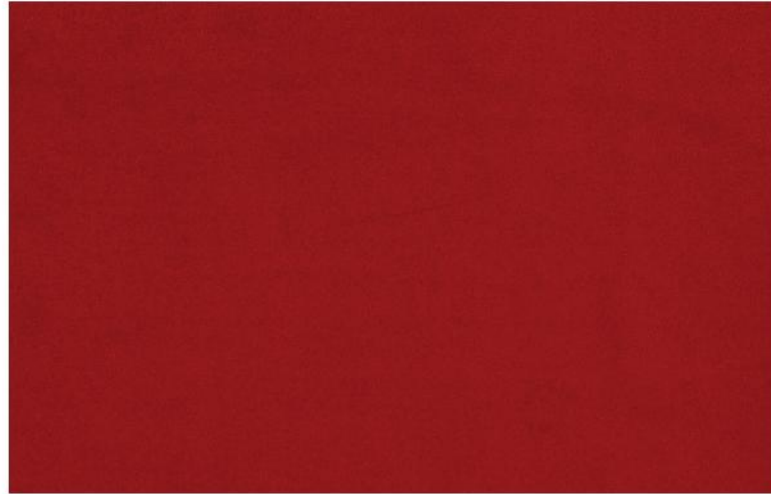
**EASY TO CLEAN (No Chemical Treatment)**

**HIGH ABRASION RESISTANCE**

**FR COMPLIANT**

Our Performance Fabrics are super easy to clean and it is noteworthy that this property is not achieved with chemical stain repellent agents. Woven with special yarns, these fabrics further undergo a special softening to achieve inherent ease of cleaning. This allows for 'spot cleaning' of regular stains with water and mild soap or detergent. Additionally, these fabrics have high resistance to abrasion and pilling. They also meet basic FR standards for Upholstery fabrics.





**COMFORT AND QUALITY THAT INSTILLS FAITH**

A sturdy upholstery in a select palette of matt colors, is a soft yet hard wearing low pile knit velvet with a backing. A performance fabric- durable, and easy to care and clean.

**Book: EMOTIONS 3**

ARTICLE REFERENCE	Faith 3002
AVAILABLE COLOURS	49
WIDTH	137 cm
REPEAT	H-0          V-0
COMPOSITION	100% Polyester
WEIGHT	430 g/m <sup>2</sup>
ABRASION RESISTANCE	+100,000 Wyzenbeek
FR STANDARD	TB117-2013 COMPLIANT
USAGE	Upholstery
CARE INSTRUCTION	<input checked="" type="checkbox"/> No Steam <input checked="" type="checkbox"/> Do Not Tumble Dry <input checked="" type="checkbox"/> Do Not Bleach <input checked="" type="checkbox"/> Professional Wet Clean

Note: MOQ for Special Color 300M



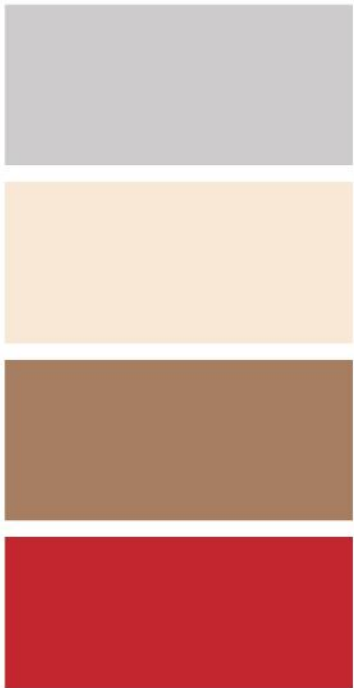
**NO MORE WISHES LEFT TO BE DESIRED**

A knit velvet with a backing, supporting a mildly striped monotone surface with a remarkable linearity. A performance fabric- durable, and easy to care and clean.

**Book: EMOTIONS 3**

ARTICLE REFERENCE	Desire 3003
AVAILABLE COLOURS	38
WIDTH	137 cm
REPEAT	H-0          V-0
COMPOSITION	100% Polyester
WEIGHT	390 g/m <sup>2</sup>
ABRASION RESISTANCE	+100,000 Wyzenbeek
FR STANDARD	TB117-2013 COMPLIANT
USAGE	Upholstery
CARE INSTRUCTION	<input checked="" type="checkbox"/> No Steam <input checked="" type="checkbox"/> Do Not Tumble Dry <input checked="" type="checkbox"/> Do Not Bleach <input checked="" type="checkbox"/> Professional Wet Clean

Note: MOQ for Special Color 300M



# DELIGHT 3004

VFM DESIGN



### DELIGHTFUL BLEND OF STYLE AND PERFORMANCE

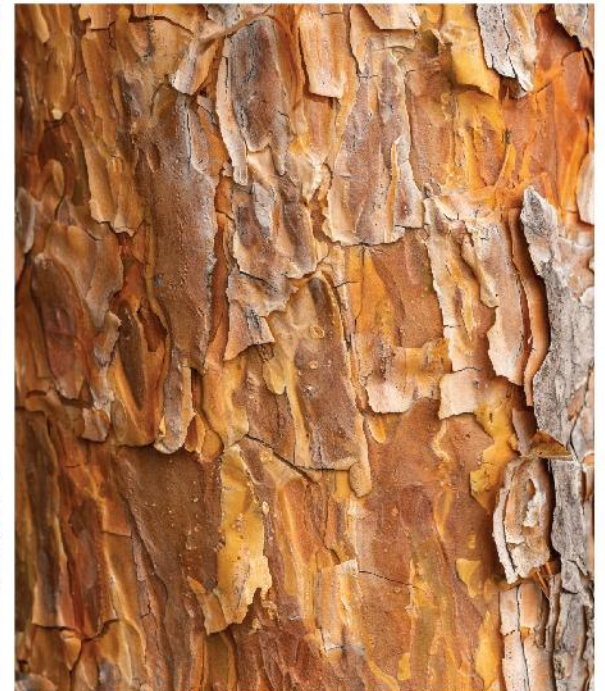
A supple fabric with a small 'tone in tone' check, almost engraved in the light weight but strong knit velvet with a backing. A performance fabric-durable, and easy to care and clean.

### Book: EMOTIONS 3

ARTICLE REFERENCE	Delight 3004
AVAILABLE COLOURS	10
WIDTH	137 cm
REPEAT	H-0      V-0
COMPOSITION	100% Polyester
WEIGHT	310 g/m <sup>2</sup>
ABRASION RESISTANCE	+100,000 Wyzenbeek
FR STANDARD	TB117-2013 COMPLIANT
USAGE	Upholstery
CARE INSTRUCTION	<input checked="" type="checkbox"/> No Steam <input checked="" type="checkbox"/> Do Not Tumble Dry <input checked="" type="checkbox"/> Do Not Bleach <input checked="" type="checkbox"/> Professional Wet Clean

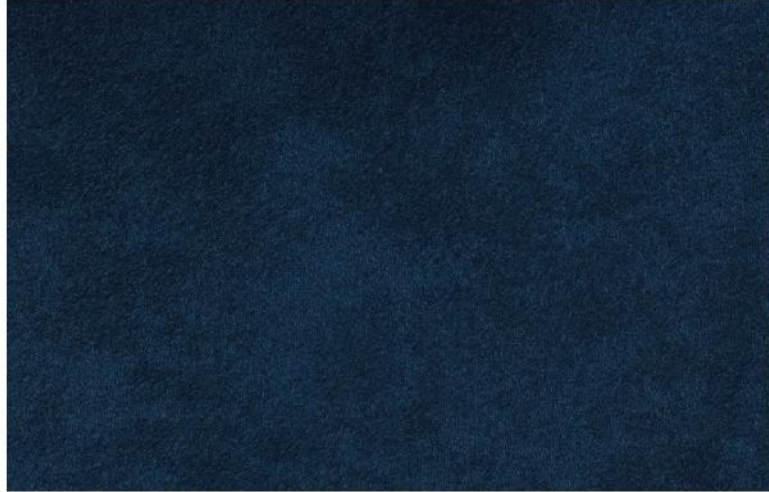
Note: MOQ for Special Color 300M





## GLEE 3005

VFM DESIGN



### A LIGHTWEIGHT AND GLEEFUL FAUX SUEDE

A sleek low pile woven velvet that gives the impression of a suede with strength that defies its soft hand. The suave matt surface creates an aura of chic luxury and style.

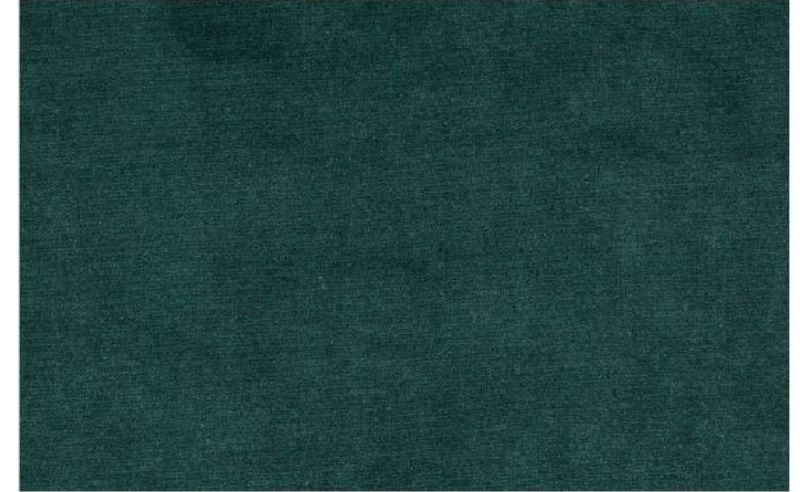
#### Book: EMOTIONS 4

ARTICLE REFERENCE	Glee 3005
AVAILABLE COLOURS	22
WIDTH	137 cm
REPEAT	H-0          V-0
COMPOSITION	100% Polyester
WEIGHT	255 g/m <sup>2</sup>
ABRASION RESISTANCE	+100,000 Wyzenbeek
FR STANDARD	TB117-2013 COMPLIANT
USAGE	Upholstery
CARE INSTRUCTION	<input checked="" type="checkbox"/> No Steam <input checked="" type="checkbox"/> Do Not Tumble Dry <input checked="" type="checkbox"/> Do Not Bleach <input checked="" type="checkbox"/> Professional Wet Clean

Note: MOQ for Special Color 300M

## FREEDOM 3006

VFM DESIGN



### FREE TO CHOOSE ULTIMATE LUXURY AND STYLE

A heavy weight knit velvet with a backing. Built to last, the fabric redefines extravagance with an opulence that brightens the designed ambience with its subtle sheen.

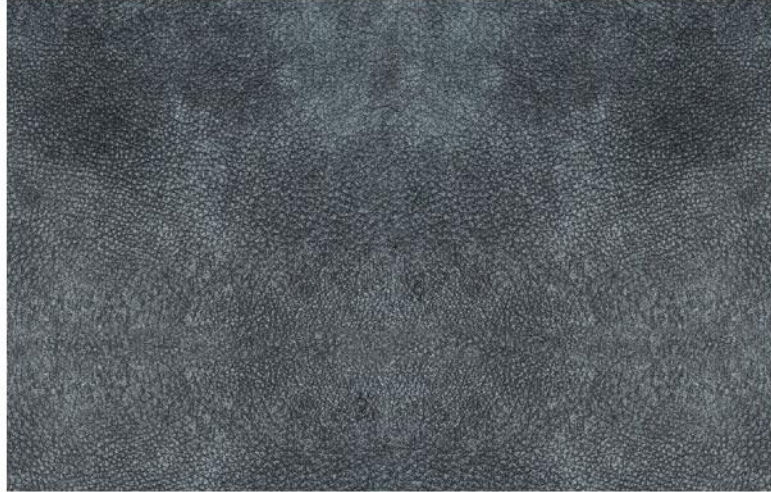
#### Book: EMOTIONS 4

ARTICLE REFERENCE	Freedom 3006
AVAILABLE COLOURS	14
WIDTH	137 cm
REPEAT	H-0          V-0
COMPOSITION	100% Polyester
WEIGHT	750 g/m <sup>2</sup>
ABRASION RESISTANCE	+100,000 Wyzenbeek
FR STANDARD	TB117-2013 COMPLIANT
USAGE	Upholstery
CARE INSTRUCTION	<input checked="" type="checkbox"/> No Steam <input checked="" type="checkbox"/> Do Not Tumble Dry <input checked="" type="checkbox"/> Do Not Bleach <input checked="" type="checkbox"/> Professional Wet Clean

Note: MOQ for Special Color 300M

# MARVEL 3007

VFM DESIGN



## THE MARVELOUS GUILT FREE LOOK OF LEATHER

A printed, fleece backed knit velvet with a timeless appeal of leather that allows guilt free indulgence in the soft and inviting texture that is durable enough for high traffic applications.

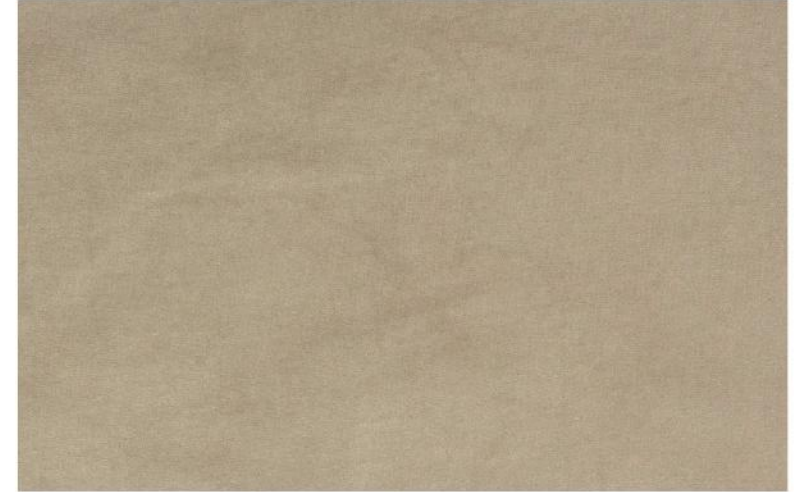
### Book: EMOTIONS 4

ARTICLE REFERENCE	Marvel 3007
AVAILABLE COLOURS	8
WIDTH	137 cm
REPEAT	H-0          V-0
COMPOSITION	100% Polyester
WEIGHT	450 g/m <sup>2</sup>
ABRASION RESISTANCE	+100,000 Wyzenbeek
FR STANDARD	TB117-2013 COMPLIANT
USAGE	Upholstery
CARE INSTRUCTION	<input checked="" type="checkbox"/> No Steam <input checked="" type="checkbox"/> Do Not Tumble Dry <input checked="" type="checkbox"/> Do Not Bleach <input checked="" type="checkbox"/> Professional Wet Clean

Note: MOQ for Special Color 300M

# PASSION 3008

VFM DESIGN



## PASSIONATE ABOUT ELEGANCE AND QUALITY

A fleece backed knit velvet that emanates a gentle soft feel, complimenting the designed ambience with a contemporary iridescence that embodies a passion for luxury and comfort.

### Book: EMOTIONS 4

ARTICLE REFERENCE	Passion 3008
AVAILABLE COLOURS	23
WIDTH	137 cm
REPEAT	H-0          V-0
COMPOSITION	100% Polyester
WEIGHT	440 g/m <sup>2</sup>
ABRASION RESISTANCE	+100,000 Wyzenbeek
FR STANDARD	TB117-2013 COMPLIANT
USAGE	Upholstery
CARE INSTRUCTION	<input checked="" type="checkbox"/> No Steam <input checked="" type="checkbox"/> Do Not Tumble Dry <input checked="" type="checkbox"/> Do Not Bleach <input checked="" type="checkbox"/> Professional Wet Clean

Note: MOQ for Special Color 300M

# DELECTA 3009

VFM DESIGN



## DELECTABLY ATTRACTIVE WITH A SOFT HAND

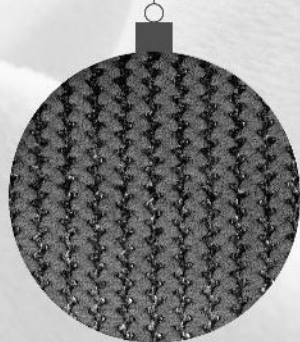
This robust knit velvet with a backing, displays a soft intermittently broken linearity, that sets it apart with a subtle but bold 'tone in tone' look of a hand drawn hatch.

### Book: EMOTIONS 4

ARTICLE REFERENCE	Delecta 3009
AVAILABLE COLOURS	17
WIDTH	137 cm
REPEAT	H-9.9 cm(3 7/8")      V-18.1 cm(7 1/8")
COMPOSITION	100% Polyester
WEIGHT	550 g/m <sup>2</sup>
ABRASION RESISTANCE	+100,000 Wyzenbeek
FR STANDARD	TB117-2013 COMPLIANT
USAGE	Upholstery
CARE INSTRUCTION	<input checked="" type="checkbox"/> No Steam <input checked="" type="checkbox"/> Do Not Tumble Dry <input checked="" type="checkbox"/> Do Not Bleach <input checked="" type="checkbox"/> Professional Wet Clean

Note: MOQ for Special Color 300M





**Europe:**

[office@baumann.co.at](mailto:office@baumann.co.at)

**Middle East:**

[office@warpsandwefts.com](mailto:office@warpsandwefts.com)

**USA:**

[office@baumanndekorusa.com](mailto:office@baumanndekorusa.com)

**India:**

[office@consilioresources.com](mailto:office@consilioresources.com)

[www.vfm-design.com](http://www.vfm-design.com)