



baumann  
dekor

*Woven Luxury since 1916*

## *Arte, Bellezza & Terrenna*

by **BAUMANN DEKOR**

**ARTE** Page 2

**BELLEZZA** Page 22

**TERRENNNA** Page 30

### *Textile Manufacturer Since 1916*

In the far north of Austria, more precisely in the “Waldviertel” area, the textile industry has a long tradition with an interesting history of weaving creativity and innovation into fabrics.

Among the few companies that were able to withstand the tough international competition, Baumann Dekor has consistently maintained its position in the market over the decades, retaining its uniqueness and competitive edge.

## Collection Name: ARTE

Striking a perfect balance between artistic elegance and functionality.

The Arte collection combines a wide variety of designs that are reminiscent of works of art. Playful antique looking leaf motifs elegantly imparting delicacy to eye-catching graphic yet robust upholsteries; enchanting light and airy, decorative netted patterns gracefully complementing strong textured heavy-duty fabrics; All in all, a smart collection with a wide range of neutrals and a universal color palette forever in demand in the hospitality industry.

### Keywords:

Variety, Artistic, Classical, Elegant.





## FRONDOSO

A nostalgic dip into the verdant beauty of fall

With a seamless leafy pattern that engages from the get-go, FRONDOSO instills a warm feeling of nostalgia, projecting a lush verdant experience of the elaborate autumn beauty. The unique detailed pattern on a flowing light weight fabric is sure to stand out, and impress; no matter the setting where is it used.

### Keywords:

Shiny, Nostalgic, Autumn/Fall, Leafy, lush

Article Reference	Fronodoso 48850			
No. of Colors	5			
Width (+/-)	140cm			
Repeat (+/-)	Vertical	28.70 cm	Horizontal	35.50 cm
Composition	100% Polyester FR			
Weight (+/-)	257 g/m <sup>2</sup>			
Abrasion Resistance(ca.)	N/A			
Usage	Drapery, Cushion			
Care Instructions				



48850-020



48850-022



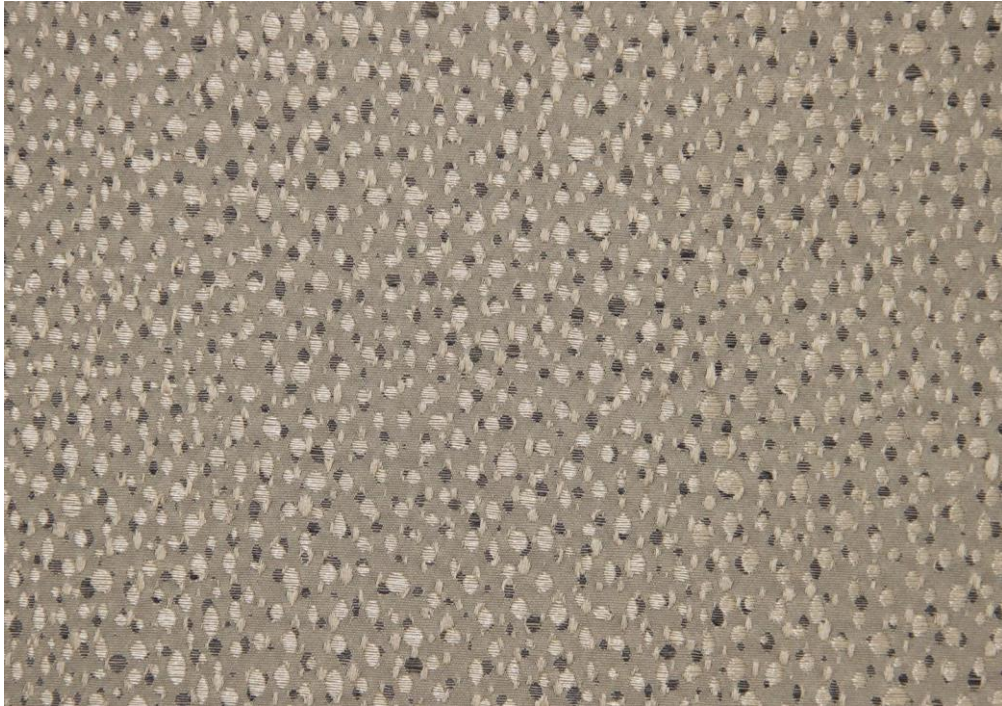
48850-025



48850-027



48850-028



## MESCOLARE

A thought-provoking small repeat jacquard

Reminiscent of the rainy season, MESCOLARE emulates raindrops on glass with seemingly gentle streams of flowing water adding an element of relaxation into the aura of this design. Its bright allure and soft sheen captivates and invites to gaze deeper into the subtle depth of the pattern.

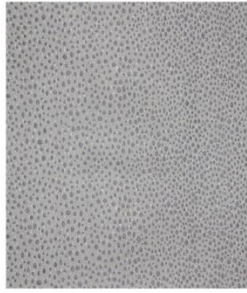
### Keywords:

Small scale, Leopard, Raindrops, All over, sheen

Article Reference	Mescolare 48851			
No. of Colors	9			
Width (+/-)	140 cm			
Repeat (+/-)	Vertical	12.10 cm	Horizontal	35.50 cm
Composition	100% Polyester FR			
Weight (+/-)	259 g/m <sup>2</sup>			
Abrasion Resistance(ca.)	20000 Martindale			
Usage	Drapery, Cushion, Upholstery			
Care Instructions				



48851-002



48851-019



48851-020



48851-022



48851-026



48851-029



48851-090



48851-098



48851-099




## SCALA

A durable jacquard pattern aiming to reach for the sky

Designed to stand out; this durable jacquard appears to reach for the sky with a diagonal, irregularly stepped, geometric pattern, that extends endlessly, creating an ambience of eternity. The modern chenille design captures the creative essence of a progressive pursuit with an exclusive appeal.

### Keywords:

Diagonal, Free-flowing, Geometric, Stepped, Chenille

Article Reference	Scala 48852			
No. of Colors	7			
Width (+/-)	140 cm			
Repeat (+/-)	Vertical	6.40 cm	Horizontal	6.40 cm
Composition	100% Polyester FR			
Weight (+/-)	400 g/m <sup>2</sup>			
Abrasion Resistance(ca.)	50000 Martindale			
Usage	Cushion, Upholstery			
Care Instructions				



48852-002



48852-022



48852-025



48852-029



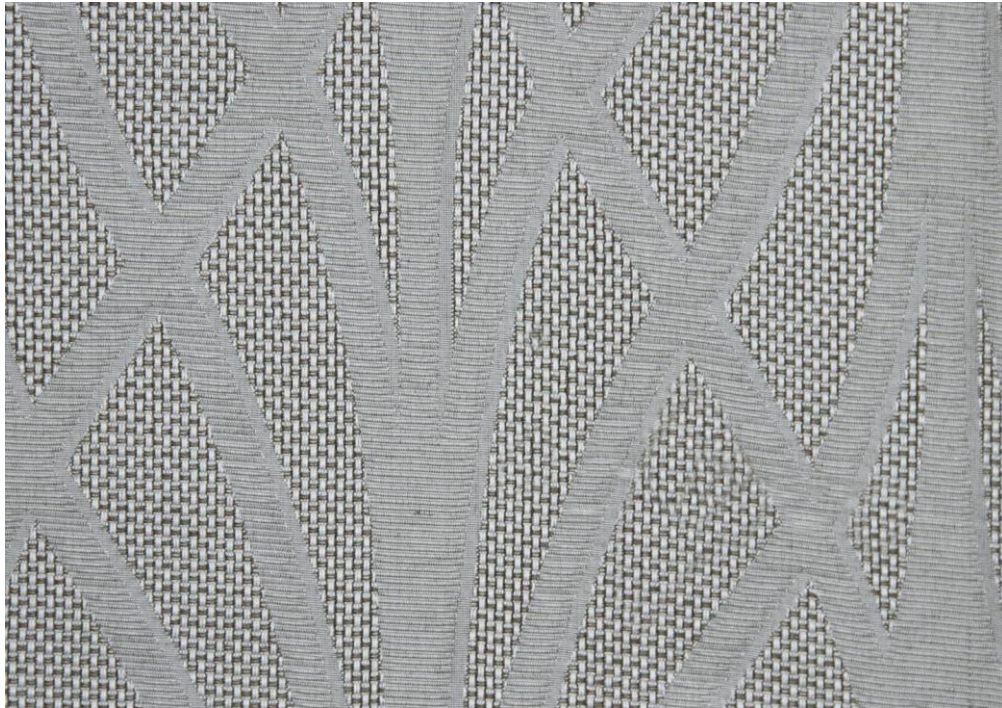
48852-050



48852-087



48852-090



**VENTOSO**

Light and airy, yet free flowing and bold in appearance

Employing the age old saying, ‘Less is more’, this light, airy, and ostensibly delicate design stands tall and makes its mark with a ‘large repeat’ climber pattern. The flawlessly intricate weave complementing a seamlessly free flowing design, create a bold and commanding presence.

**Keywords:**

Decorative, Delicate, Free Flowing, Waves, Climber

Article Reference	Ventoso 48854			
No. of Colors	10			
Width (+/-)	140 cm			
Repeat (+/-)	Vertical	34.80 cm	Horizontal	23.20 cm
Composition	100% Polyester FR			
Weight (+/-)	162 g/m <sup>2</sup>			
Abrasion Resistance(ca.)	N/A			
Usage	Cushion, Drapery			
Care Instructions				



48854-002



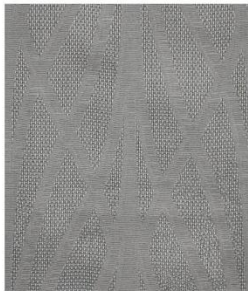
48854-019



48854-020



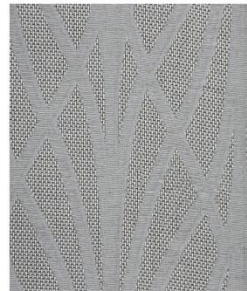
48854-025



48854-027



48854-028



48854-029



48854-038



48854-039



48854-090





## PAOLO

A shiny, inviting, ribbed design.

A ribbed design, boasting modestly with subtle yet striking lurex yarns, adds flair to any mood board through its textural uniqueness. Creating a vibe of curiosity inviting to touch, feel, and inspect the intricacies of its weave, this visibly lush and delicate fabric served as a durable and strong upholstery.

### Keywords:

Ribbed, Shiny, Small scale, Intricate, elegant

Article Reference	Paolo 48855			
No. of Colors	12			
Width (+/-)	140 cm			
Repeat (+/-)	Vertical	N/A	Horizontal	N/A
Composition	100% Polyester FR			
Weight (+/-)	415 g/m <sup>2</sup>			
Abrasion Resistance(ca.)	50000 Martindale			
Usage	Cushion, Upholstery			
Care Instructions				



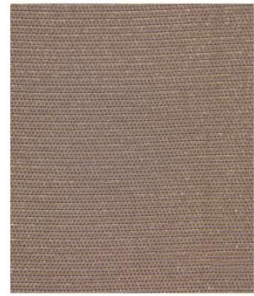
48855-002



48855-020



48855-026



48855-060



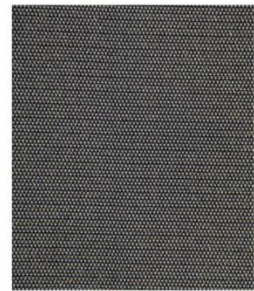
48855-065



48855-067



48855-090



48855-091



48855-093



48855-095



48855-097



48855-098



## LINO

A simply intricate, irregular weave with a linen feel and look

Emanating a linen look and feel, this lightweight fabric is an ode to the natural linens in a long lasting and easy-care, flame-retardant polyester composition. A subdued sheen adds to the glory and style of this textured uni with a graceful fall.

### Keywords:

Linen feel/look, Irregular weave, Lightweight, Sheen

Article Reference	Lino 48856			
No. of Colors	9			
Width (+/-)	140cm			
Repeat (+/-)	Vertical	N/A	Horizontal	N/A
Composition	100% Polyester FR			
Weight (+/-)	124 g/m <sup>2</sup>			
Abrasion Resistance(ca.)	N/A			
Usage	Drapery, Cushion			
Care Instructions				



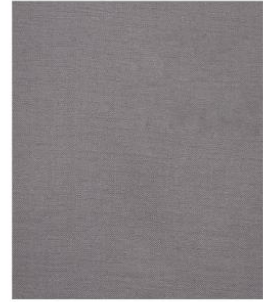
48856-002



48856-019



48856-020



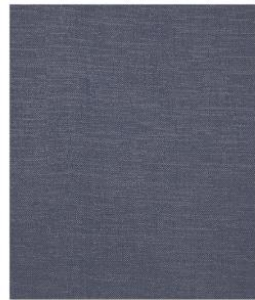
48856-022



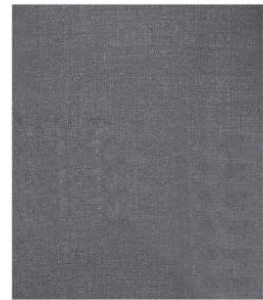
48856-029



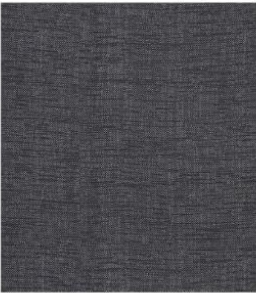
48856-039



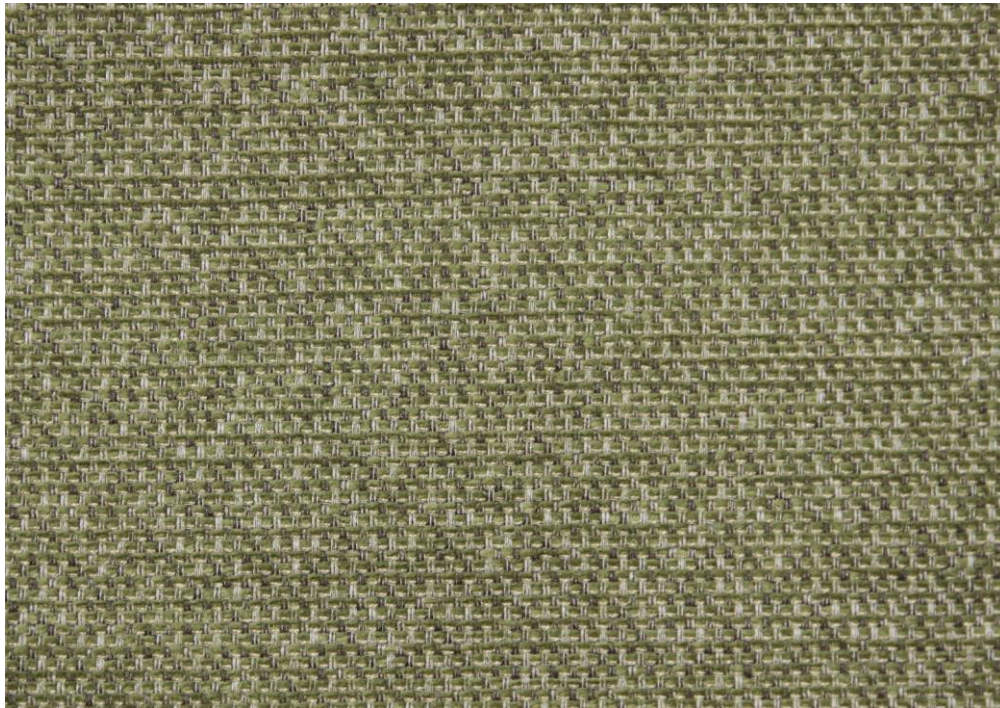
48856-080



48856-090



48856-091



## STRUTTURA

A matt, textured dobby like pattern with an intricate design

This matt finish, textured pattern with classical chevron elements draws its beauty from intricacies of the weave. A dobby-look jacquard, STRUTTURA is an elegant amalgamation of classical design patterns, a well-defined textured optic and a rough looking, yet soft haptic.

### Keywords:

Intricate, Small Scale, Durable, Hidden chevron, Matt

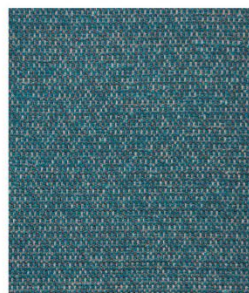
Article Reference	Struttura 48859			
No. of Colors	6			
Width (+/-)	140cm			
Repeat (+/-)	Vertical	N/A	Horizontal	N/A
Composition	100% Polyester FR			
Weight (+/-)	423 g/m <sup>2</sup>			
Abrasion Resistance(ca.)	50000 Martindale			
Usage	Cushion, Upholstery			
Care Instructions				



48859-010



48859-017



48859-018



48859-020



48859-025



48859-080



## QUADRATO

A bold, imaginative checked pattern, inspiring creativity

An ode to a classical pattern, with a creative and progressive influence. The age old and accepted simple check pattern is reinvented in this dooby look fabric, adopting a 3d, lush look, employing the use of multiple colors to create interest, curiosity, and awe. This article will establish itself as a picture piece, no matter which mood board it adorns.

### Keywords:

Multi-color check, Classic, Throwback, Innovative, 3 dimensional

Article Reference	Quadrato 48860			
No. of Colors	5			
Width (+/-)	140cm			
Repeat (+/-)	Vertical	15.70 cm	Horizontal	13.90 cm
Composition	100% Polyester FR			
Weight (+/-)	409 g/m <sup>2</sup>			
Abrasion Resistance(ca.)	50000 Martindale			
Usage	Cushion, Upholstery			
Care Instructions				



48860-013



48860-018



48860-020



48860-025



48860-028



## CORTECIA

An inviting, and alluring article with a bold appearance.

With an alluring, abstract and seemingly endless simple pattern, CORTECIA creates an inviting atmosphere, demanding a closer look. The subtle yarn dyed jacquard pattern is sure to assimilate itself seamlessly with any interior scheme for decorative or upholstery use, and yet stand out effortlessly among the design elements in its sphere.

### Keywords:

Two tone, Inviting, Abstract, Multiuse, Simple

Article Reference	Cortecia 49835			
No. of Colors	9			
Width (+/-)	140 cm			
Repeat (+/-)	Vertical	28.00 cm	Horizontal	35.50 cm
Composition	100% Polyester FR			
Weight (+/-)	358 g/m <sup>2</sup>			
Abrasion Resistance(ca.)	30000 Martindale			
Usage	Drapery, Cushion, Upholstery			
Care Instructions				



49835-006



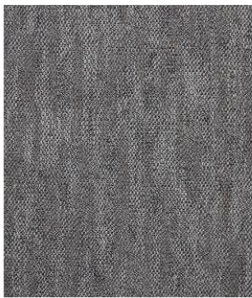
49835-007



49835-012



49835-020



49835-029



49835-055



49835-080



49835-087



49835-090

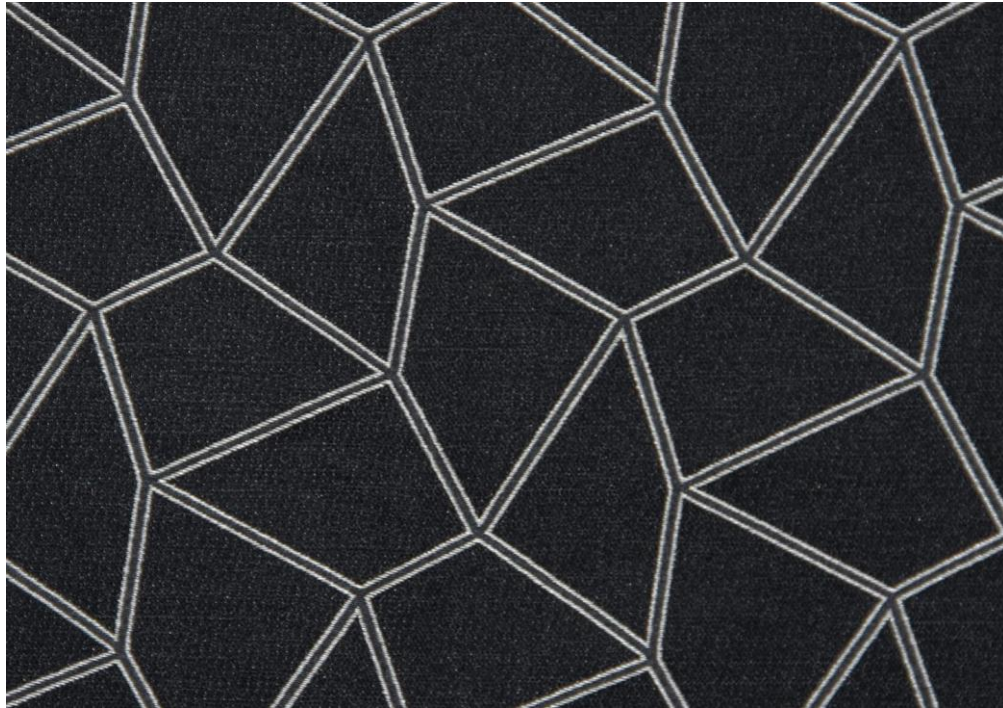
## Collection Name: BELLEZZA

Delicately translating classical inspiration into modern and contemporary style.

The Bellezza collection exudes a dreamy atmosphere with a wide range of patterns and colors—enchantingly shimmering motifs from flora and fauna, linen-like surfaces, luxurious upholsteries, large repeat jacquard motifs interpreted with interesting weaving techniques, tone-in-tone color schemes as well as colorful combinations and successful curation of coarse and fine textures.

**Keywords:** Colorful, Regal, Shiny, Natural, tradition, classical





## MOSAICO

Small scale, Leopard, Raindrops, All over, sheen

MOSAICO effortlessly combines a polygonal mosaic inspired geometric design, to create an everlasting curiosity presenting itself as a futuristic modern pattern, with bold and alluring colors, imparting a contemplative, yet exuberant vibe. The fabric powerfully serves as an uplifting complement in any designed interior.

### Keywords:

Geometric, Futuristic, Shiny, Alluring, Criss-cross

Article Reference	Mosaico 48853			
No. of Colors	10			
Width (+/-)	140cm			
Repeat (+/-)	Vertical	12.30 cm	Horizontal	12.00 cm
Composition	100% Polyester FR			
Weight (+/-)	249 g/m <sup>2</sup>			
Abrasion Resistance(ca.)	N/A			
Usage	Cushion, Drapery			
Care Instructions				



48853-002



48853-019



48853-023



48853-025



48853-026



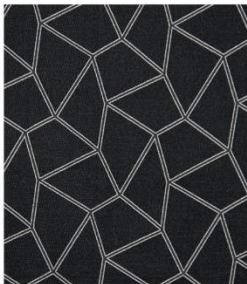
48853-027



48853-029



48853-039



48853-090



48853-098





**LENA**

A free-flowing climber design on a light and airy background

Seamlessly merging a ribbed climber pattern on a light and airy background, LENA successfully adds a breath of fresh air and a subtle flair of elegance to its surrounds. A special combination of textural and plain weaves imparts a unique character to this botanically inspired design.

**Keywords:**

Free-flowing, Climber, Light, Mixed weaves, Botanical

Article Reference	Lena 48857			
No. of Colors	5			
Width (+/-)	140cm			
Repeat (+/-)	Vertical	34.90 cm	Horizontal	23.50 cm
Composition	100% Polyester FR			
Weight (+/-)	184 g/m <sup>2</sup>			
Abrasion Resistance(ca.)	N/A			
Usage	Cushion, Drapery			
Care Instructions				



48857-002



48857-090



48857-095



48857-097



48857-098



## PARADISO

An eloquent and artistic toile interpretation of a forest

PARADISO brings to life a heavenly jungle scene by interpreting classical elements in a contemporary modern design, weaving nature with a toile inspired language that evokes imaginative vibes. Reminiscent of the resplendent flora and fauna of a thriving forest, shiny yarns add an artistic paradisaical aura to the sophisticated ensemble.

### Keywords:

Creative, Natural, Scenic, Nostalgic, Forest, Toile

Article Reference	Paradiso 48858			
No. of Colors	10			
Width (+/-)	140cm			
Repeat (+/-)	Vertical	40.10 cm	Horizontal	35.00 cm
Composition	100% Polyester FR			
Weight (+/-)	235 g/m <sup>2</sup>			
Abrasion Resistance(ca.)	N/A			
Usage	Cushion, Drapery			
Care Instructions				



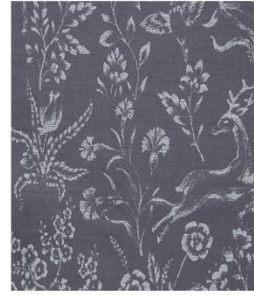
48858-002



48858-009



48858-020



48858-059



48858-079



48858-089



48858-090



48858-095



48858-097



48858-098



## **FORTESO**

An irregular check pattern fabric, robust like a strong fort

Adding flair and a touch of creativity to the traditional checkered design, FORTESO is a reinvented irregular check pattern, strong as a fort. Fusing geometric and textural elements to create a lively atmosphere, the structured chenille design brings the weave alive on this busy pattern.

### **Keywords:**

Textured, Geometric, Irregular check, Busy, Chenille

Article Reference	Forteso 48861			
No. of Colors	7			
Width (+/-)	140cm			
Repeat (+/-)	Vertical	5.30 cm	Horizontal	4.50 cm
Composition	100% Polyester FR			
Weight (+/-)	470 g/m <sup>2</sup>			
Abrasion Resistance(ca.)	50,000			
Usage	Cushion, Upholstery			
Care Instructions				



48861-019



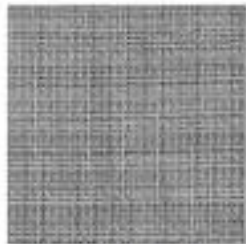
48861-020



48861-030



48861-080



48861-090



48861-092



48861-096

## Collection Name: TERRENA

A truly 'Down to Earth' collection, masterfully interpreting vivid imagination in earthy tones.

A 'Down to Earth' collection of patterns and designs ranging from organic to geometrics, curvy to linear, floral to rigid, traditional to modern; All in neutral shades, forever in demand for the hospitality industry, this collection of earth inspired shades and patterns is a collection of choicest designs in an evergreen earthy and universal color palette. An absolute essential in any design library.

**Keywords:** Neutral, Nature inspired, Contrast, Seamless, Down to Earth






**BENDY**

A speckled chevron artfully balancing irregularity and geometry

BENDY is an artistic spin on the classic chevron, representing craftsmanship in its complex weave, directionally flipping the usual zigzag pattern, in creative and interesting contrast with the shimmery speckled base coordinating with the design of Shimmy.

**Keywords:**

Speckled, Chevron, Geometric, Abstract, Zig-zag

Article Reference	Bendy 47800			
No. of Colors	3			
Width (+/-)	140cm			
Repeat (+/-)	Vertical	12.30 cm	Horizontal	3.30 cm
Composition	100% Polyester FR			
Weight (+/-)	420 g/m <sup>2</sup>			
Abrasion Resistance(ca.)	20000 Martindale			
Usage	Cushion, Drapery, Upholstery			
Care Instructions				



47800-020



47800-029



47800-090



**SHIMMY**

An artistic design shimmering with an irregular speckled design

Designed to charm with its austere yet disarming personality, SHIMMY combines a ground that carries a weathered and almost handloom look, in a harmonious duality with an abstract speckled pattern, both complementing each other with charming grace.

**Keywords:**

Speckled, Abstract, Irregular, Artistic, Shimmery

Article Reference	Shimmy 47802			
No. of Colors	3			
Width (+/-)	140cm			
Repeat (+/-)	Vertical	N/A	Horizontal	N/A
Composition	100% Polyester FR			
Weight (+/-)	420 g/m <sup>2</sup>			
Abrasion Resistance(ca.)	15000 Martindale			
Usage	Cushion, Drapery, Upholstery			
Care Instructions				



47802-020



47802-029



47802-090



**DEXTER**

A unique houndstooth with a difference - speckled and suave

Its speckled background borrowed from the complementing design Shimmy, adds a generous dose of style to this classic houndstooth, creating a unique textured combination of the organic ground with the popular and evergreen broken check houndstooth pattern.

**Keywords:**

Speckled, Abstract, Houndstooth, Artistic, Geometric

Article Reference	Dexter 47864			
No. of Colors	3			
Width (+/-)	140cm			
Repeat (+/-)	Vertical	9.80 cm	Horizontal	8.90 cm
Composition	100% Polyester FR			
Weight (+/-)	420 g/m <sup>2</sup>			
Abrasion Resistance(ca.)	25000 Martindale			
Usage	Cushion, Drapery, Upholstery			
Care Instructions				



47864-020



47864-029



47864-090



**TELLUR**

A bold organic design that engages with its intrigue

An organic pattern that represents the raw and rugged tellurian beauty of the earthy terrain represented in a refined and sturdy construction. This upholstery fabric, robust in its appearance and structure is a strong contender to withstand the rigors in any contract setting.

**Keywords:**

3-D, Shiny, Unpredictable, Textured, Criss-cross

Article Reference	Tellur 48211			
No. of Colors	5			
Width (+/-)	140cm			
Repeat (+/-)	Vertical	N/A	Horizontal	N/A
Composition	100% Polyester FR			
Weight (+/-)	520 g/m <sup>2</sup>			
Abrasion Resistance(ca.)	50000 Martindale			
Usage	Cushion, Upholstery			
Care Instructions				



48211-020



48211-029



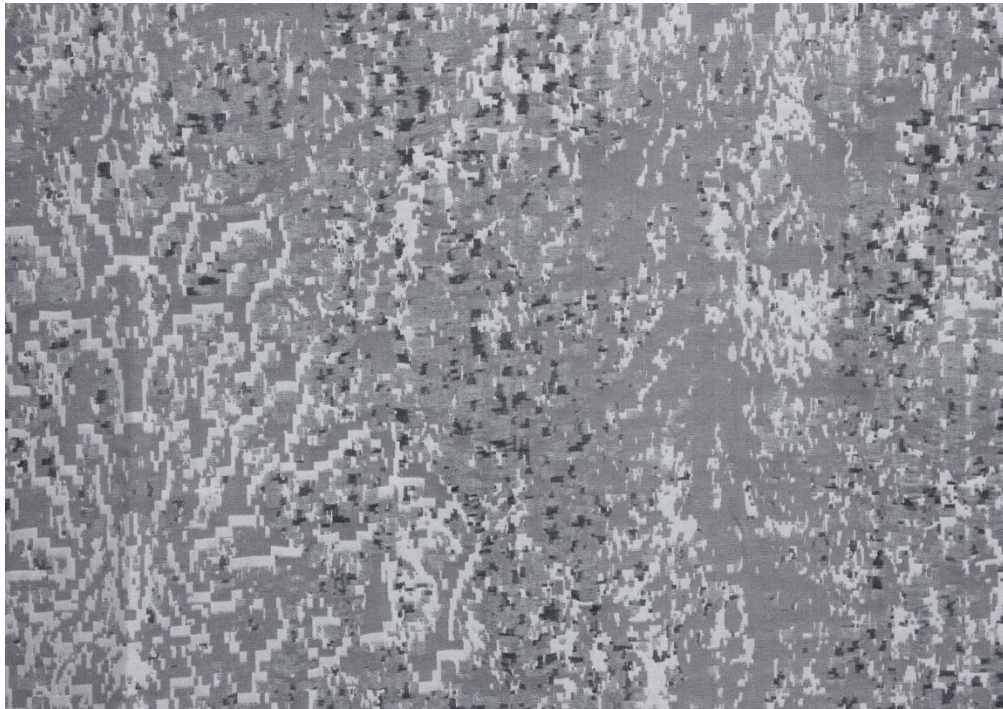
48211-090



48211-096



48211-099



**FRISKA**

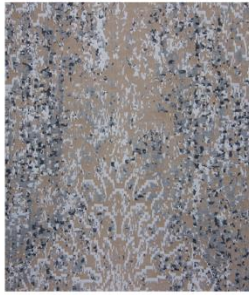
Energetic representation of a semi geometric abstract design.

Semi geometric, abstract, lively, and busy; FRISKA enchants with its vivid pattern, using geometric motifs interlaced with abstract design, to create a pleasantly playful and energetic scene. Reminiscent of modern abstract art pieces, this fabric endeavors to make a bold statement.

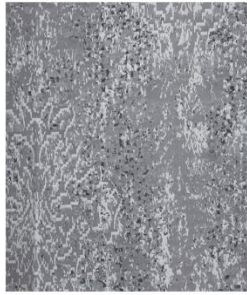
**Keywords:**

Busy, Semi-geometrical, Abstract, Artistic, Playful

Article Reference	Friska 48742			
No. of Colors	3			
Width (+/-)	140cm			
Repeat (+/-)	Vertical	92.20 cm	Horizontal	69.00 cm
Composition	100% Polyester FR			
Weight (+/-)	345 g/m <sup>2</sup>			
Abrasion Resistance(ca.)	N/A			
Usage	Cushion, Drapery			
Care Instructions				



48742-020



48742-029



48742-090



**CRYSTAL**

Modern geometric design that wins with its simplicity.

A futuristic design, employing geometric motifs in the form of polygons and lines; CRYSTAL encapsulates its namesake as it resembles the sharp, sculpted edges of crystal glass with sudden angles and sharp design on a clean background, confidently adding flair to any modern and creative design scheme.

**Keywords:**

Geometric, Lines, Crystalline, Clean, Futuristic

Article Reference	Crystal 48745			
No. of Colors	4			
Width (+/-)	140cm			
Repeat (+/-)	Vertical	27.00 cm	Horizontal	70.00 cm
Composition	100% Polyester FR			
Weight (+/-)	340 g/m <sup>2</sup>			
Abrasion Resistance(ca.)	N/A			
Usage	Cushion, Drapery			
Care Instructions				



48745-002



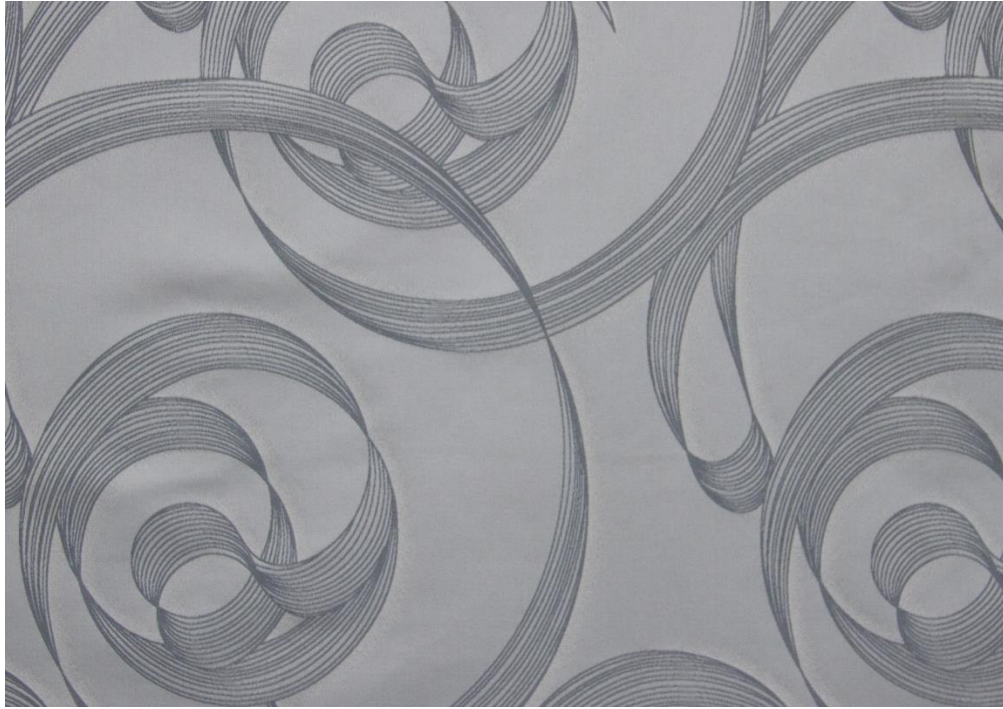
48745-012



48745-029



48745-090



**SELENA**

An ostensibly never ending, free flowing spirited design

Satin weave imparts a soft, smooth, slightly shimmery ground to SELENA, with a distinctive flair added by a free flowing, curvy design overlay. The ostensibly never-ending play of curves creates a touch of abstract modernity, in this thought-provoking design.

**Keywords:**

Free-flowing, Curvy, Abstract, Shiny, Satin

Article Reference	Selena 48807			
No. of Colors	3			
Width (+/-)	140cm			
Repeat (+/-)	Vertical	58.60 cm	Horizontal	35.20 cm
Composition	100% Polyester FR			
Weight (+/-)	235 g/m <sup>2</sup>			
Abrasion Resistance(ca.)	N/A			
Usage	Cushion, Drapery			
Care Instructions				



48807-002



48807-019



48807-090



**SPRINK**

A luxurious feel, brought to life by its unique pattern

A luxuriously stylish pattern sprinkled generously on a satin base, SPRINK presents a striking monotone design with a large repeat abstract pattern that is spread in relief, unevenly on the smooth surface of the fabric, giving it a suave and sophisticated presence.

**Keywords:**

Shiny, Glitzy, Luxurious, Tone in Tone, Satin

Article Reference	Sprink 48813			
No. of Colors	3			
Width (+/-)	140cm			
Repeat (+/-)	Vertical	95.20 cm	Horizontal	35.50 cm
Composition	100% Polyester FR			
Weight (+/-)	230 g/m <sup>2</sup>			
Abrasion Resistance(ca.)	N/A			
Usage	Cushion, Drapery			
Care Instructions				



48813-022



48813-019



48813-090





**MIZZLE**

A textured irregular weave creating a unique bespoke design

MIZZLE enchants like a light rain, a welcome drizzle that pleasantly adds a cool touch to its atmosphere. A simple interplay of thick chenille with thinner yarns appear to float on the surface of this fabric to create an optic as well as haptic variation in this simple yet suave design that can feel at home in any design setting.

**Keywords:**

Textured, Luxurious, Striped, Irregular floats, Rain

Article Reference	Mizzle 49311			
No. of Colors	4			
Width (+/-)	140cm			
Repeat (+/-)	Vertical	N/A	Horizontal	N/A
Composition	100% Polyester FR			
Weight (+/-)	435 g/m <sup>2</sup>			
Abrasion Resistance(ca.)	35000 Martindale			
Usage	Cushion, Upholstery			
Care Instructions				



49311-002



49311-009



49311-039



49311-090



## LAMINO

A foliage inspired design reminiscent of the large leafy overgrowth.

A two-tone design of large repeat leaf motifs that takes inspiration from natural design elements; LAMINO strives to represent the luxurious opulence of nature. It exudes a calm relaxed ambience with the mildly textured surface of the foliage in elegant contrast to the prominent veins.

### Keywords:

Natural, Thought-provoking, Nostalgic, Seasonal, Leafy

Article Reference	Lamino 49437			
No. of Colors	3			
Width (+/-)	140cm			
Repeat (+/-)	Vertical	49.00 cm	Horizontal	36.00 cm
Composition	100% Polyester FR			
Weight (+/-)	235 g/m <sup>2</sup>			
Abrasion Resistance(ca.)	N/A			
Usage	Cushion, Drapery			
Care Instructions				



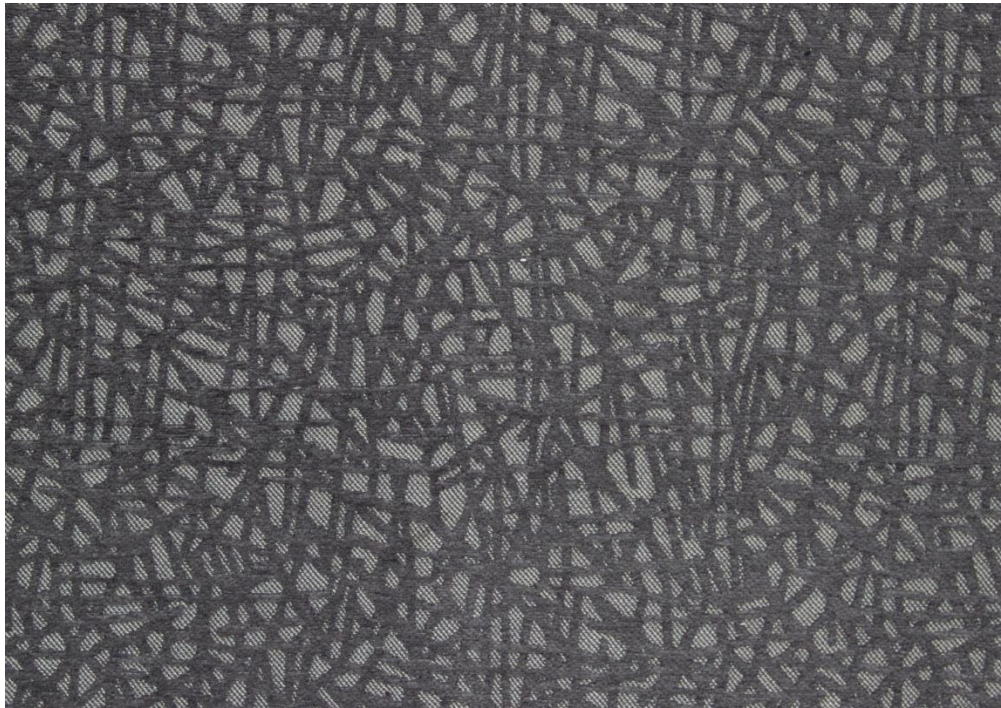
49437-002



49437-012



49437-090



## VECTO

A pattern of intersecting vectors like one created by cracked glass

An enticing geometric vector design, VECTO imitates a cracked glass pattern, artistically imagined on a structured background. The chenille construction contrasting with the ground gives this fabric a well-defined, 3-dimensional construction that engages curiosity and interest.

### Keywords:

Small scale, Geometric, Striped, 3-D, Inviting, Vectors

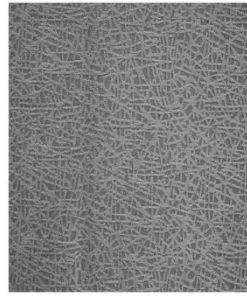
Article Reference	Vecto 49642			
No. of Colors	4			
Width (+/-)	140cm			
Repeat (+/-)	Vertical	38.10 cm	Horizontal	35.50 cm
Composition	100% Polyester FR			
Weight (+/-)	520 g/m <sup>2</sup>			
Abrasion Resistance(ca.)	50000 Martindale			
Usage	Cushion, Upholstery			
Care Instructions				



49642-019



49642-090



49642-091



49642-099



**SPRIG**

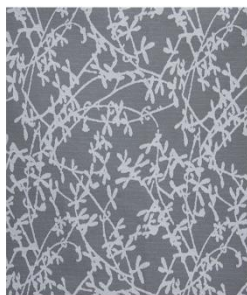
A vivid climber design on an inviting jacquard weave

A delightful climber like chenille pattern, on an intricate coarse looking but inviting background construction creates a natural vibe, as the stylish organic pattern of SPRIG grows its shoots taking off from the surface of the fabric, representing growing branches, twigs, and flowers ready to bloom.

**Keywords:**

Climber, Chenille, Twigs, Branching, Organic

Article Reference	Sprig 49659			
No. of Colors	3			
Width (+/-)	140cm			
Repeat (+/-)	Vertical	34.20 cm	Horizontal	35.60 cm
Composition	100% Polyester FR			
Weight (+/-)	440 g/m <sup>2</sup>			
Abrasion Resistance(ca.)	12000 Martindale			
Usage	Drapery, Cushion, Upholstery			
Care Instructions				



49659-019



49659-020



49659-091



## VENNA

Bold classic interlinked circular patterns in a contemporary setting

Adopting a traditional look, VENNA uses old school Venn diagram like interlinked circular motifs creatively sprawled on a lightly textured surface in the form of decorative mandala like patterns in a large repeat design. The modern representation of a classic but timeless design is a designer's delight.

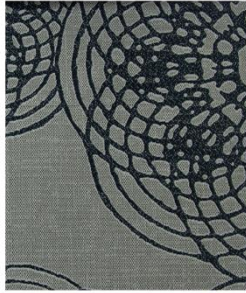
### Keywords:

Mandala, Venn Diagram, Interlaced circles, Modern

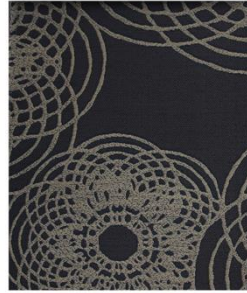
Article Reference	Venna 49741			
No. of Colors	5			
Width (+/-)	140cm			
Repeat (+/-)	Vertical	68.60 cm	Horizontal	70.00 cm
Composition	100% Polyester FR			
Weight (+/-)	322 g/m <sup>2</sup>			
Abrasion Resistance(ca.)	17000 Martindale			
Usage	Drapery, Cushion, Upholstery			
Care Instructions				



49741-012



49741-029



49741-062



49741-066



49741-090



**SILVIE**

A floral pattern that emulates a creeper or a climber at will

Reminiscent of light shining on the spring flowers, SILVIE naturally encapsulates the joy and beauty of seasonal blossoms in a neatly arranged jacquard construction. This floral design presents itself as a delicate creeper or a climber depending on the directional use of the fabric—horizontally or vertically.

**Keywords:**

Floral, Natural, Seasonal, Nostalgic, Flora

Article Reference	Silvie 49766			
No. of Colors	3			
Width (+/-)	140cm			
Repeat (+/-)	Vertical	29.30 cm	Horizontal	36.00 cm
Composition	100% Polyester FR			
Weight (+/-)	320 g/m <sup>2</sup>			
Abrasion Resistance(ca.)	N/A			
Usage	Cushion, Drapery			
Care Instructions				



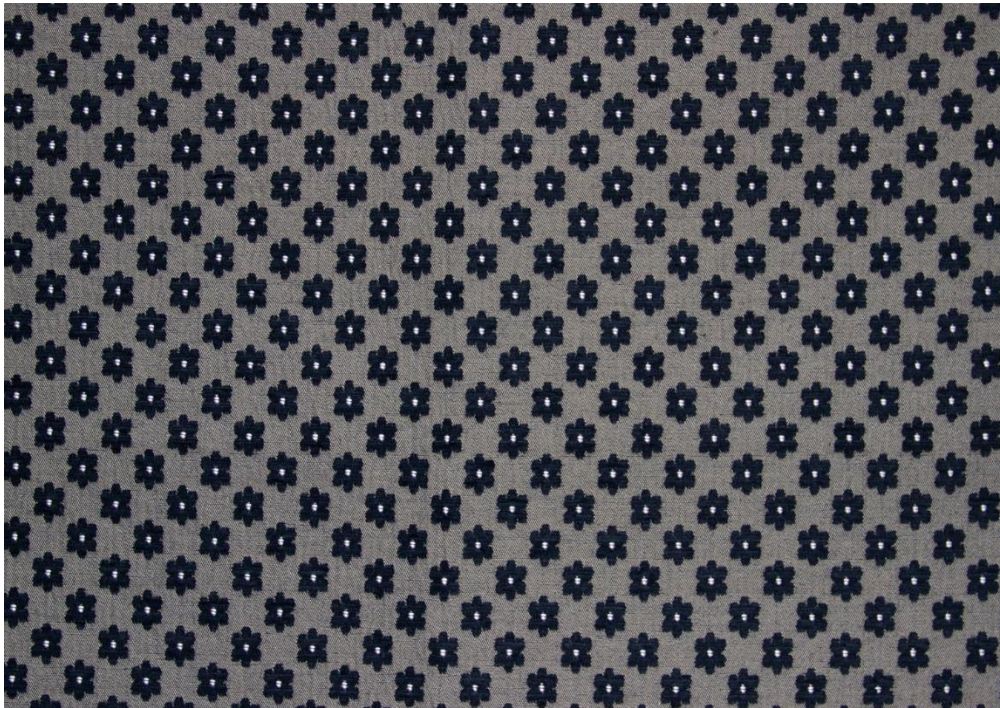
49766-026



49766-092



49766-196



## FLOS

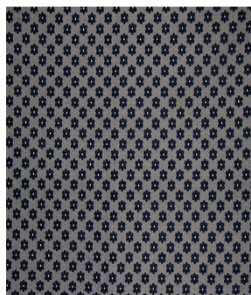
Instilling a pure joy with its small-scale floral motifs.

Flowers signify wishes of wellbeing and joy. FLOS encapsulates this feeling of goodwill with small floral motifs, straight out of the imagination of a child, evenly scattered across this jacquard woven fabric. Use of chenille yarn adds a third dimension to the design, making the simple floral pattern pop out from the fabric surface.

### Keywords:

Floral, Small-scale, Repetitive, Imaginative, Simple

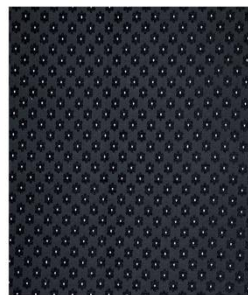
Article Reference	Flos 49787			
No. of Colors	3			
Width (+/-)	140cm			
Repeat (+/-)	Vertical	3.40 cm	Horizontal	3.50 cm
Composition	100% Polyester FR			
Weight (+/-)	525 g/m <sup>2</sup>			
Abrasion Resistance(ca.)	15000 Martindale			
Usage	Cushion, Upholstery			
Care Instructions				



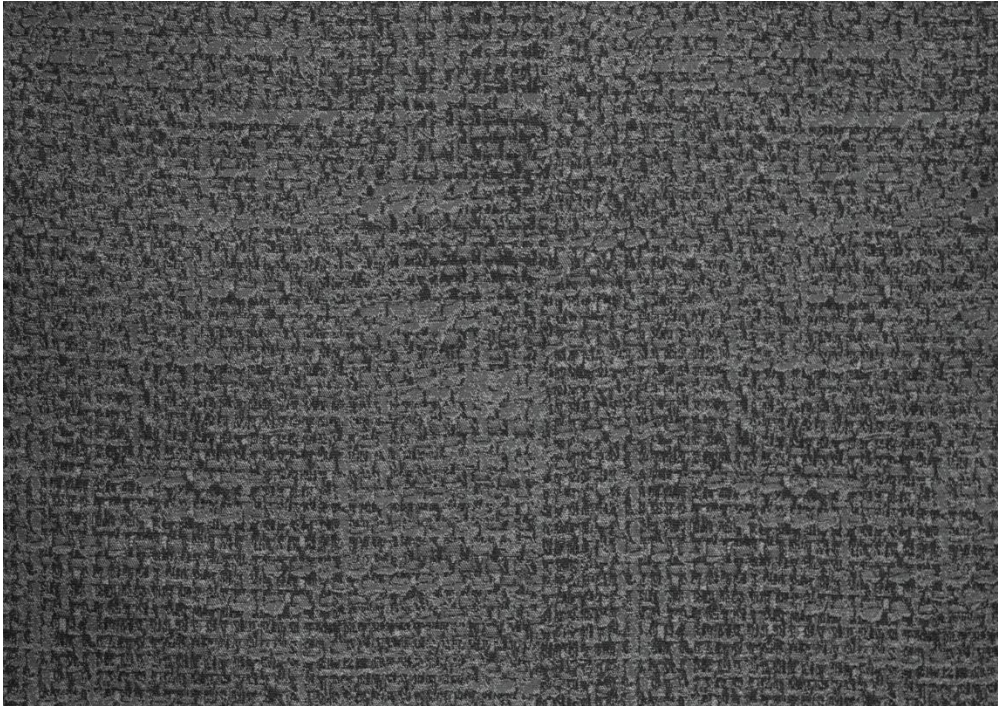
49787-029



49787-069



49787-090



**PERKA**

Abstract tonal pattern with a sleek rugged look

An abstract pattern that is reminiscent of modern art; PERKA presents an intricate play of yarns, akin to a grand old wall with a distressed appearance, that creates a statement of its own, while also complementing the surrounding design elements, allowing them to lean on it for support.

**Keywords:**

Natural, Rugged, Abstract, Distress look, Modern

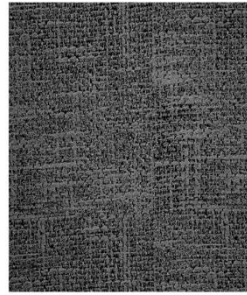
Article Reference	Perka 49886			
No. of Colors	3			
Width (+/-)	140cm			
Repeat (+/-)	Vertical	39.30 cm	Horizontal	35.00 cm
Composition	100% Polyester FR			
Weight (+/-)	230 g/m <sup>2</sup>			
Abrasion Resistance(ca.)	N/A			
Usage	Cushion, Drapery			
Care Instructions				



49886-020



49886-062



49886-091

# baumann dekor

FINE AUSTRIAN FABRICS

## **BAUMANN DEKOR GmbH**

Schremser Strasse 38 | 3950 Gmünd | Austria

T +43 2852 9008-0 | F +43 2852 9008-209

Email: [office@baumann.co.at](mailto:office@baumann.co.at)

[www.baumann.co.at](http://www.baumann.co.at)

[www.baumanndekorusa.com](http://www.baumanndekorusa.com)

### **BAUMANN DEKOR AUSTRIA**

Facebook: [baumanndekor](https://www.facebook.com/baumanndekor)

Instagram: [baumann\\_dekor](https://www.instagram.com/baumann_dekor)



### **BAUMANN DEKOR USA**

Facebook: [baumanndekorusa](https://www.facebook.com/baumanndekorusa)

Instagram: [baumanndekor\\_usa](https://www.instagram.com/baumanndekor_usa)